

WATERLOO PLACE

BRIGHTON



MARLOO PLACE

YD73 EBC



KENDRICK PROPERTY SERVICES



Located in the prestigious Waterloo Place in Brighton, this stunning Regency house is a rare find. Boasting six bedrooms spread across five stories, this terraced property offers ample space for a growing family or a lucrative Airbnb proposition. Upon entering, you are greeted by a well-presented reception room with original features throughout. The property's two bathrooms and utility room provide convenience and practicality for everyday living. With parking for two vehicles, a valuable commodity in this bustling area, this house offers both style and functionality. The original features add character and charm to the property, making it a truly unique find in the heart of Brighton. Whether you are looking for a spacious family home or an investment opportunity in the Airbnb market, this six-bedroom terraced house ticks all the boxes. Don't miss out on the chance to own a piece of Regency history in this vibrant seaside town.



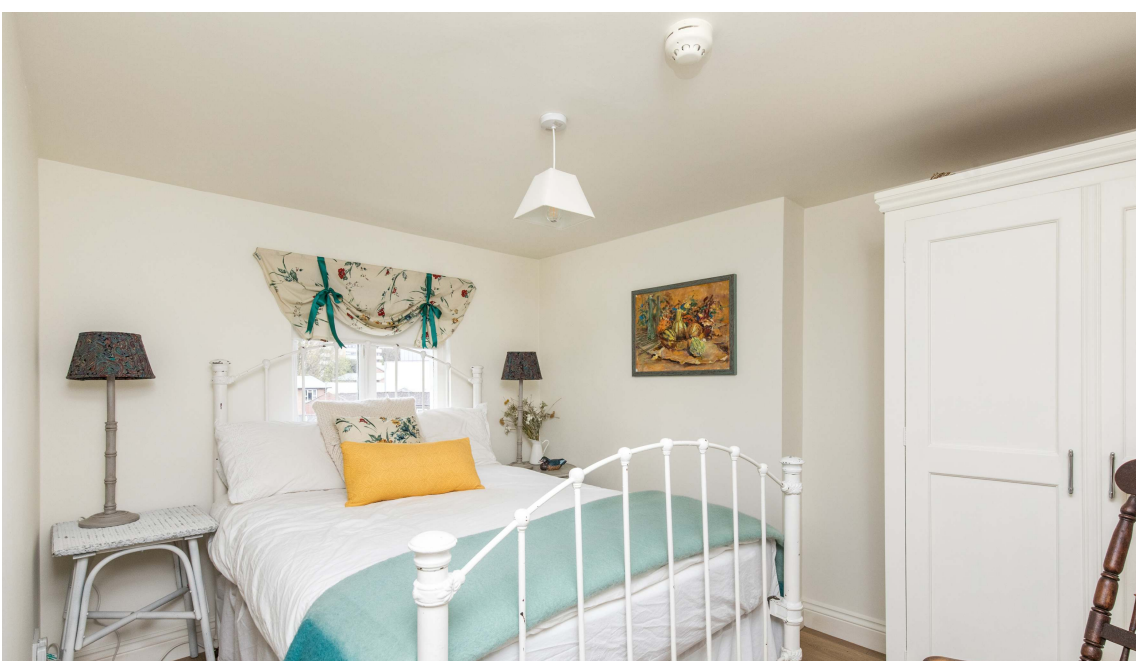


KENDRICK PROPERTY SERVICES



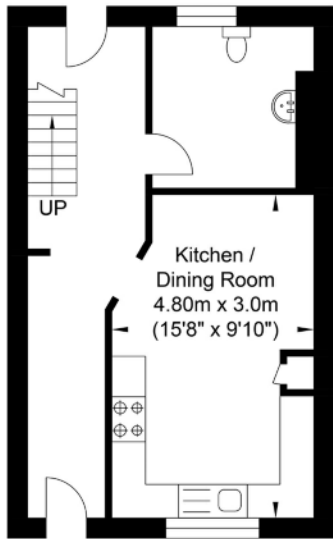


KENDRICK PROPERTY SERVICES

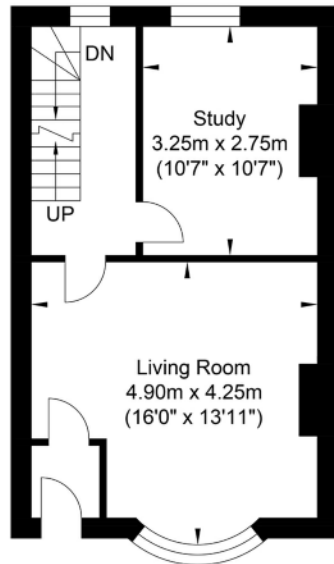




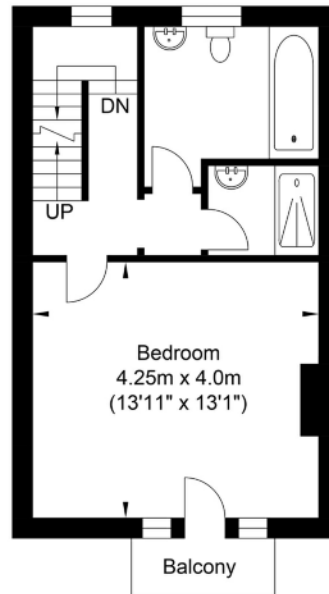
Waterloo Place, Brighton



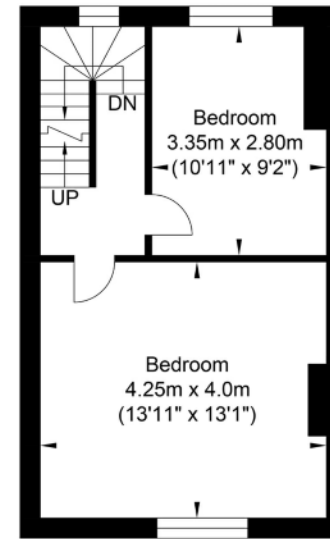
Lower Ground Floor
Approximate Floor Area
334.0 sq ft
(31.03 sq m)



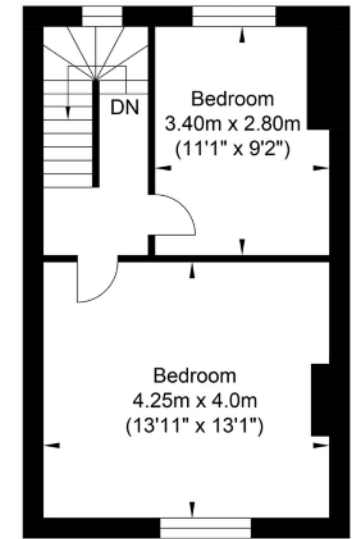
Ground Floor
Approximate Floor Area
339.38 sq ft
(31.53 sq m)



First Floor
Approximate Floor Area
334.0 sq ft
(31.03 sq m)



Second Floor
Approximate Floor Area
334.0 sq ft
(31.03 sq m)



Third Floor
Approximate Floor Area
334.0 sq ft
(31.03 sq m)



Approximate Gross Internal Area = 155.65 sq m / 1675.40 sq ft
Illustration for identification purposes only, measurements are approximate, not to scale.



10 - 12 Lewes Road, Brighton, BN2 3HP

01273 600162

sales@kendrickpropertyservices.co.uk



A. These sales and particulars do not constitute any part of an offer of contract, and are for the guidance of prospective purchasers only and should not be relied on as statements of fact.

B. No representations are made in these particulars as to the condition of the property or as to whether any service or facilities are in good working order.

C. All measurements are approximate.