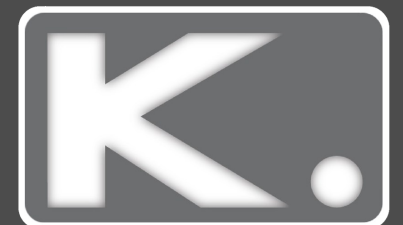
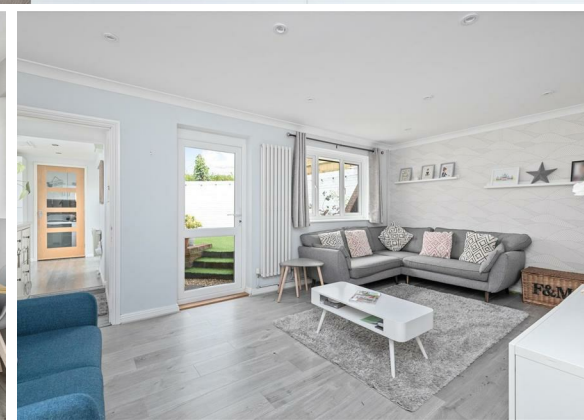
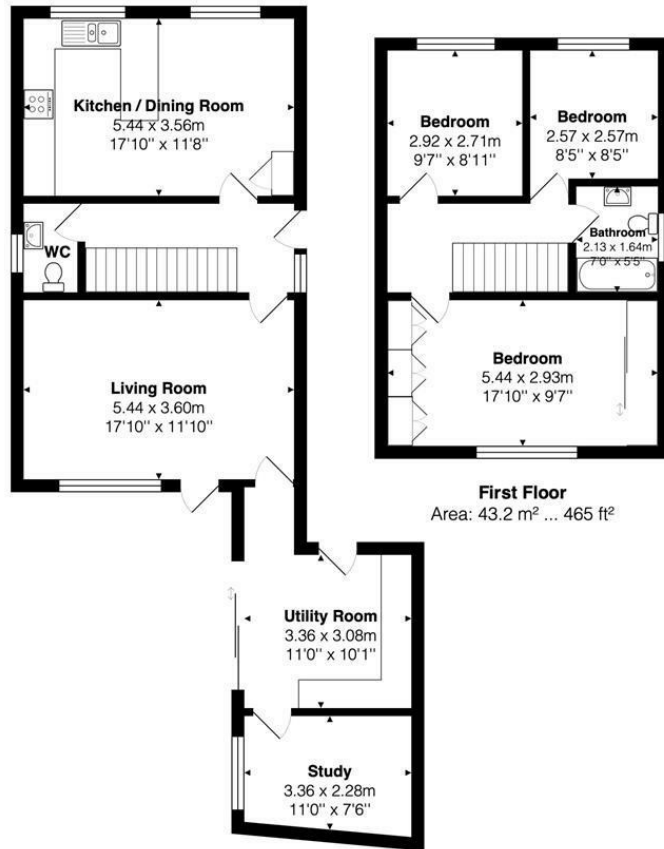




**3 Bed  
House - Detached  
located  
in Portslade**

**Price Guide £475,000**





**Ground Floor**  
Area: 70.4 m<sup>2</sup> ... 758 ft<sup>2</sup>

**First Floor**  
Area: 43.2 m<sup>2</sup> ... 465 ft<sup>2</sup>

Total Area: 113.7 m<sup>2</sup> ... 1224 ft<sup>2</sup>

Energy Efficiency Rating		Current	Potential
Very energy efficient - lower running costs			
(92 plus) A			83
(81-91) B			
(69-80) C		72	
(55-68) D			
(39-54) E			
(21-38) F			
(1-20) G			
Not energy efficient - higher running costs			
England & Wales		EU Directive 2002/91/EC	

DIRECTIONS

CONTACT

Kendrick Property Services - Brighton  
10-12 Lewes Road  
Brighton  
East Sussex  
BN2 3HP

E:  
sales@kendrickpropertyservices.co.uk  
T: 01273 600162  
www.kendrickpropertyservices.co.uk

