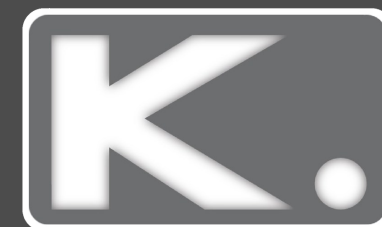


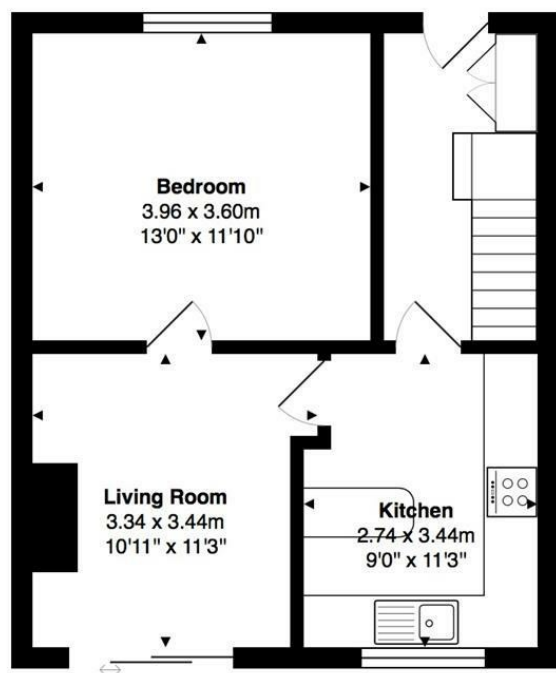


**3 Bed
House - Terraced
located in Brighton**

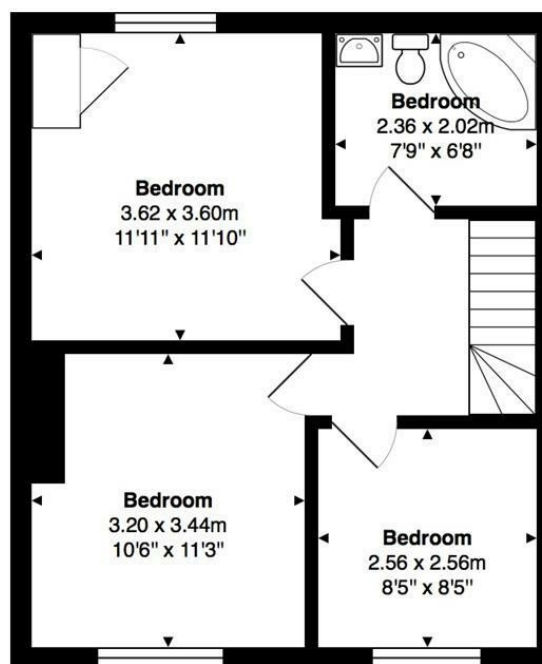
Price Guide £400,000



DIRECTIONS



Ground Floor
Area: 42.6 m² ... 459 ft²



First Floor
Area: 42.6 m² ... 459 ft²

Total Area: 85.2 m² ... 918 ft²

CONTACT

Kendrick Property Services - Brighton
10-12 Lewes Road
Brighton
East Sussex
BN2 3HP

E:
lettings@kendrickpropertyservices.co.uk
T: 01273 699600
www.kendrickpropertyservices.co.uk

