



1 Bed Barn Conversion

Swallows Nest, Gillards Farm, West Down, Ilfracombe, EX34 2JH

- Newly Renovated
- Integrated Appliances
- One Bedroom
- Parking for 1 Car

PCM

£875 PCM

- Spacious Open Plan Living Room/Kitchen
- Large Garden

Description

Nestled in the charming village of West Down, this delightful one level barn conversion offers a unique blend of rustic charm and modern living. With one spacious open plan kitchen living room which allows access to the rear back garden which is part patio and part lawned. Then a well-appointed bedroom which offers a fitted wardrobe space.

The bathroom is thoughtfully designed, featuring contemporary fixtures that enhance the overall appeal of the home. The barn conversion retains many original features, showcasing the character and history of the building while providing the comforts of modern living.

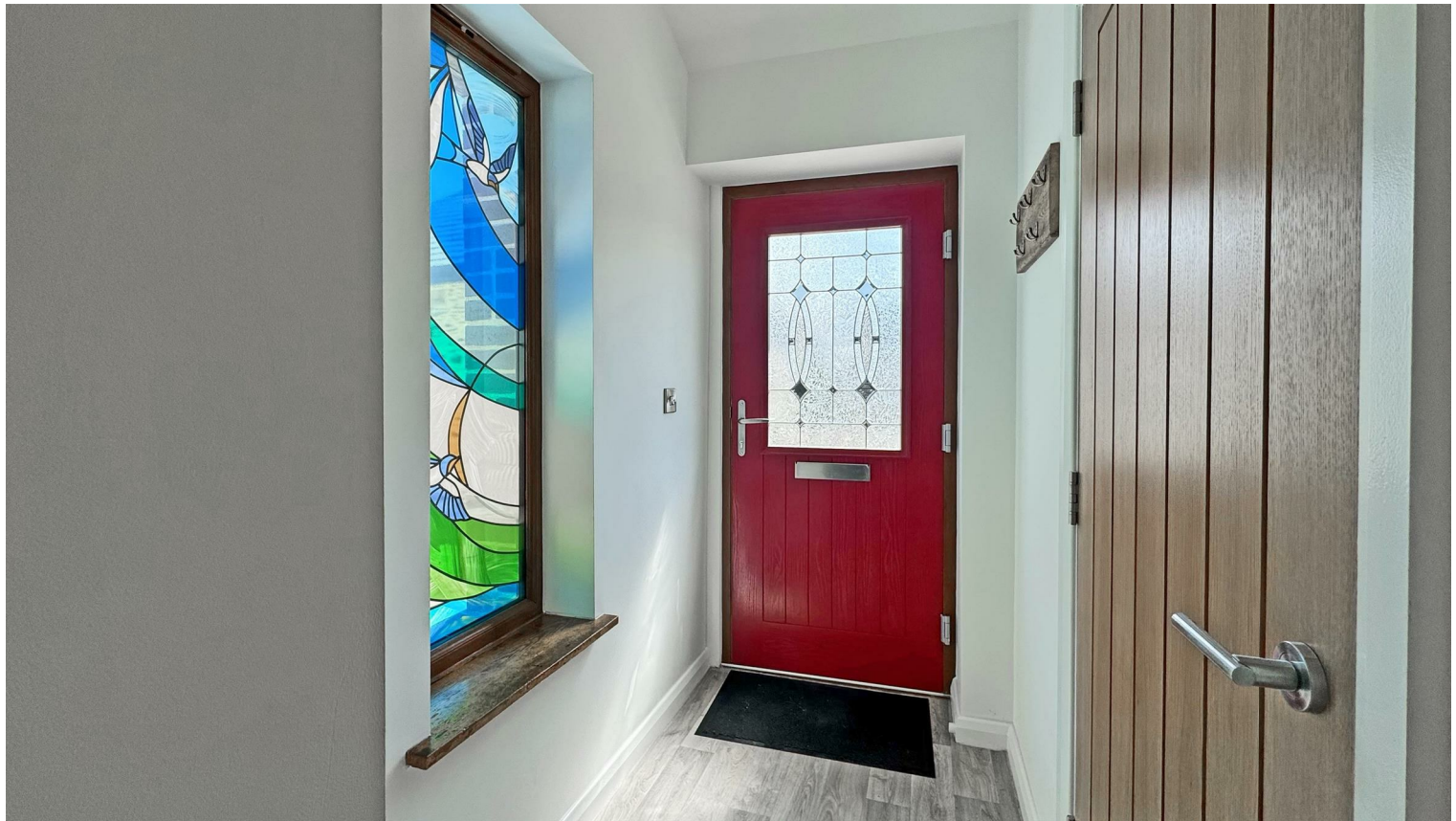
The rent for this property is £875pcm.

The deposit is £1009 of which will be registered with MyDeposits.

The council tax is initially a Band C whilst the council confirm correct rating. Any over payments to the council will be deducted from future bills. Air Source Heat Pump supplying hot water and heat.

No pets.

Situation



These particulars are believed to be correct but their accuracy is not guaranteed. They do not form part of a contract.
Copyright 2016 Phillips Smith & Dunn. All rights reserved. Phillips Smith & Dunn is a name of P. S. & D. Limited.
Our company registration number is 04753854 and we are registered in England and Wales.

Sales. Auction. Letting. Land. Commercial. Professional. Residential.