



Eltham Road, Lee, London, SE12 8UG

- THREE BEDROOMS
- LEE/BLACKHEATH BORDER
- GIA APPROX 86.2SQM
- 1 MILE FROM BLACKHEATH STATION
- NO CHAIN
- REQUIRES UPDATING
- 0.5 MILES FROM LEE STATION

Asking Price £399,995



Eltham Road, Lee, London, SE12 8UG

DESCRIPTION

For sale with no onward chain. Three-bedroom house in Lee, close to the Blackheath border, requiring some updating with an approximate gross internal area of 86.2 sqm & a rear garden measuring 37' x 16'.

The property features gas central heating (untested) & double glazing.

Lee Station and Blackheath Station are each 0.5 miles and 1 mile away from the property respectively.

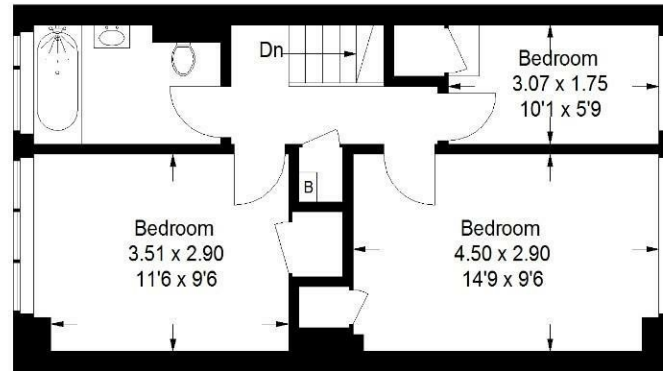
Keys held – viewings to be arranged via Hunters.



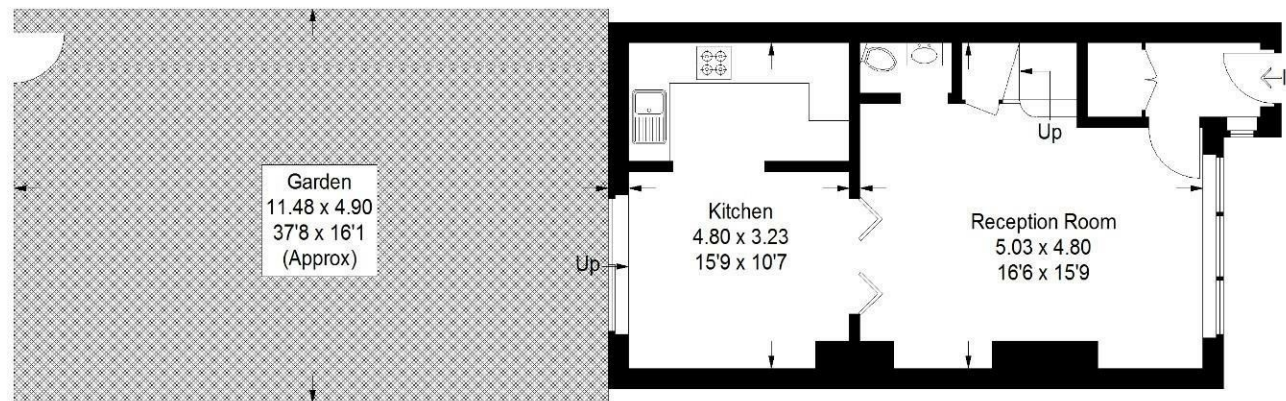


Eltham Road, SE12

Approximate Gross Internal Area
86.2 sq m / 928 sq ft



First Floor



Ground Floor

This plan is for layout guidance only. Not drawn to scale unless stated. Windows and door openings are approximate. Whilst every care is taken in the preparation of this plan, please check all dimensions, shapes and compass bearings before making any decisions reliant upon them. (ID1167261)

Viewings

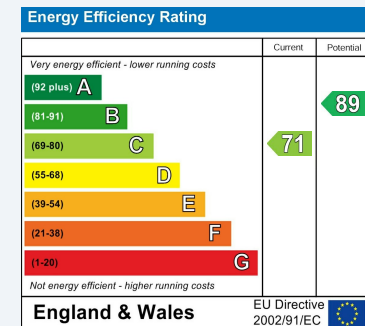
Please contact lee@hunters.com, if you wish to arrange a viewing appointment for this property or require further information.

Valuations

For a valuation of your property, please email the team with your property details, contact information and the times you are available.

ENERGY PERFORMANCE CERTIFICATE

The energy efficiency rating is a measure of the overall efficacy of a home. The higher the rating the more energy efficient the home is and the lower the fuel bills will be.



These particulars are intended to give a fair and reliable description of the property but no responsibility for any inaccuracy or error can be accepted and do not constitute an offer or contract. We have not tested any services or appliances (including central heating if fitted) referred to in these particulars and the purchasers are advised to satisfy themselves as to the working order and condition. If a property is unoccupied at any time there may be reconnection charges for any switched off/disconnected or drained services or appliances - All measurements are approximate.

THINKING OF SELLING? If you are thinking of selling your home or just curious to discover the value of your property, Hunters would be pleased to provide free, no obligation sales and marketing advice. Even if your home is outside the area covered by our local offices we can arrange a Market Appraisal through our national network of Hunters estate agents.