



Ronver Road, Lee, London, SE12 0NR

- Share of freehold
- Modern décor
- Accommodation arranged over two floors (upper ground & first floors)
- Very social kitchen & dining room
- Close to Lee Station
- Two double bedrooms
- Bay fronted lounge
- Light and bright feel
- Views over Northbrook Park
- Converted split level maisonette

Asking Price £395,000



Ronver Road, Lee, London, SE12 0NR

SHARE OF FREEHOLD!

Absolutely stunning 2-bedroom split level maisonette for sale in Lee. The property is arranged over two floors (the upper ground and first floor) and found on a quiet road that is a stone thrown away from Northbrook Park and walking distance to Lee Station.

The upper ground floor features a spacious bay fronted lounge, a very social kitchen and dining room that overlooks Northbrook Park. The first-floor features two generous sized bedrooms and a modern fitted bathroom.

We asked the current owners to tell us a little bit about their experience of living in the property and here's what they had to say:

I've had an incredible three years living on Ronver Road. The road is full of wonderful people and I've made some amazing friends I'll continue to see for years to come. There is a real community feel in the area - especially around the holidays. There are a variety of lovely pubs and restaurants within walking distance, and the row of shops at the end of the street have everything you may need last minute!

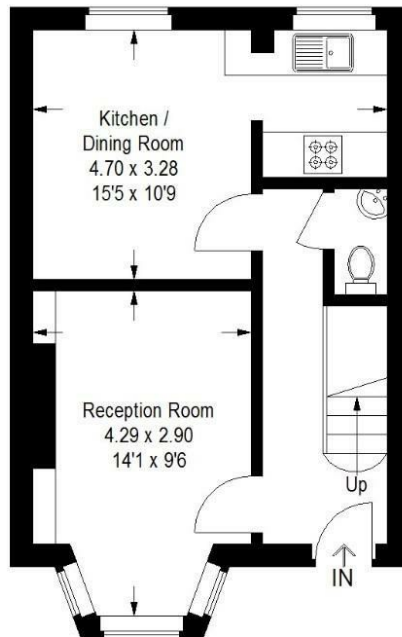
Northbrook Park behind makes you forget how close to the city you really are, with only a short 12 minute train journey into London Bridge (Lee Station is only a 10 minute walk away and has a very regular service too!). In addition to this, you can walk into Blackheath in around 30 minutes which hosts a variety of great coffee shops, restaurants and more!



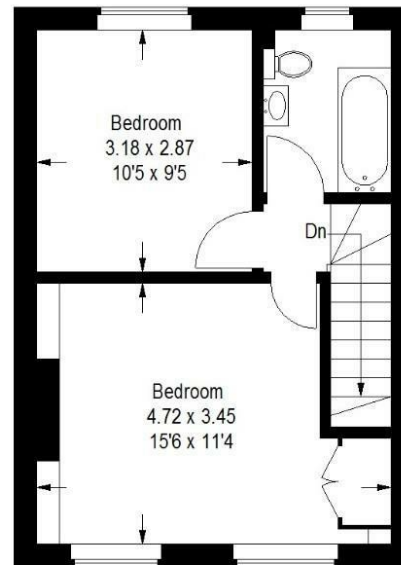


Ronver Road, SE12

Approximate Gross Internal Area
65.6 sq m / 706 sq ft



Ground Floor



First Floor

This plan is for layout guidance only. Not drawn to scale unless stated. Windows and door openings are approximate. Whilst every care is taken in the preparation of this plan, please check all dimensions, shapes and compass bearings before making any decisions reliant upon them. (ID:1142885)

Viewings

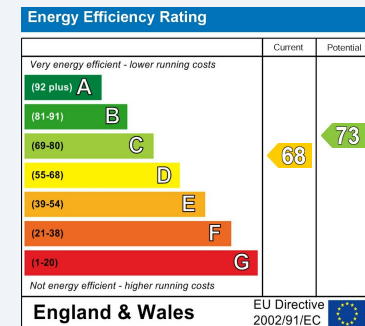
Please contact lee@hunters.com, if you wish to arrange a viewing appointment for this property or require further information.

Valuations

For a valuation of your property, please email the team with your property details, contact information and the times you are available.

ENERGY PERFORMANCE CERTIFICATE

The energy efficiency rating is a measure of the overall efficacy of a home. The higher the rating the more energy efficient the home is and the lower the fuel bills will be.



These particulars are intended to give a fair and reliable description of the property but no responsibility for any inaccuracy or error can be accepted and do not constitute an offer or contract. We have not tested any services or appliances (including central heating if fitted) referred to in these particulars and the purchasers are advised to satisfy themselves as to the working order and condition. If a property is unoccupied at any time there may be reconnection charges for any switched off/disconnected or drained services or appliances - All measurements are approximate.

THINKING OF SELLING? If you are thinking of selling your home or just curious to discover the value of your property, Hunters would be pleased to provide free, no obligation sales and marketing advice. Even if your home is outside the area covered by our local offices we can arrange a Market Appraisal through our national network of Hunters estate agents.



37 Burnt Ash Hill, Lee, SE12 0AE
Tel: 020 8851 5101 Email: lee@hunters.com <https://www.hunters.com>

