













# Oak Farm House

School Lane, Ollerton

An exquisite Grade II listed farmhouse in a beautiful Conservation area, remodelled and refurbished and offering a fabulous balance of period features and architecture combined with lovely contemporary fittings, all standing within beautiful landscaped gardens and a paddock, in all about 5.5 acres.

Council Tax band: F

Tenure: Freehold

EPC Energy Efficiency Rating: F

- Stunning Grade II listed country house in beautiful grounds of 5.5 acres
- Beautiful conservation area location between Alderley Edge and Knutsford
- Six bedrooms, four bathrooms and five reception rooms
- Excellent garaging for five cars with games room and offices over
- In all over 8000 square feet with house and buildings









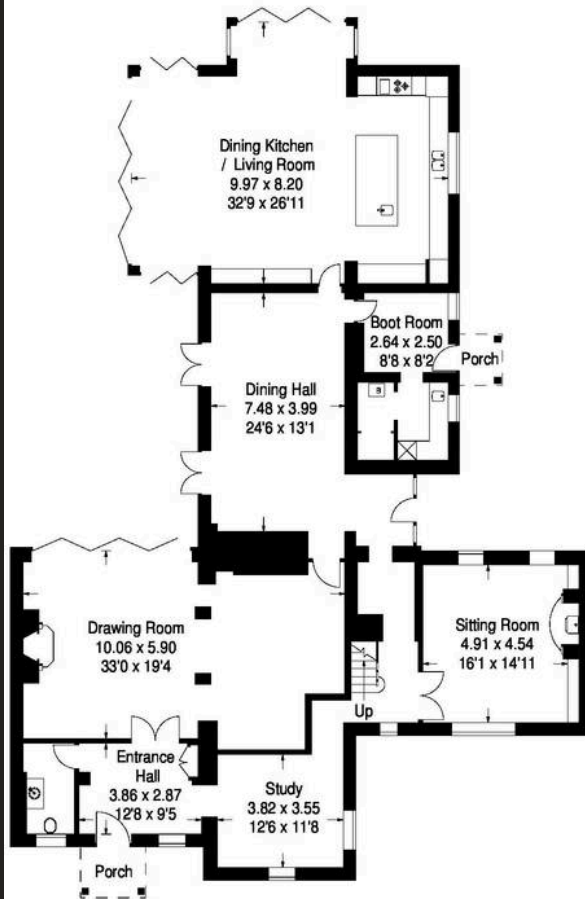




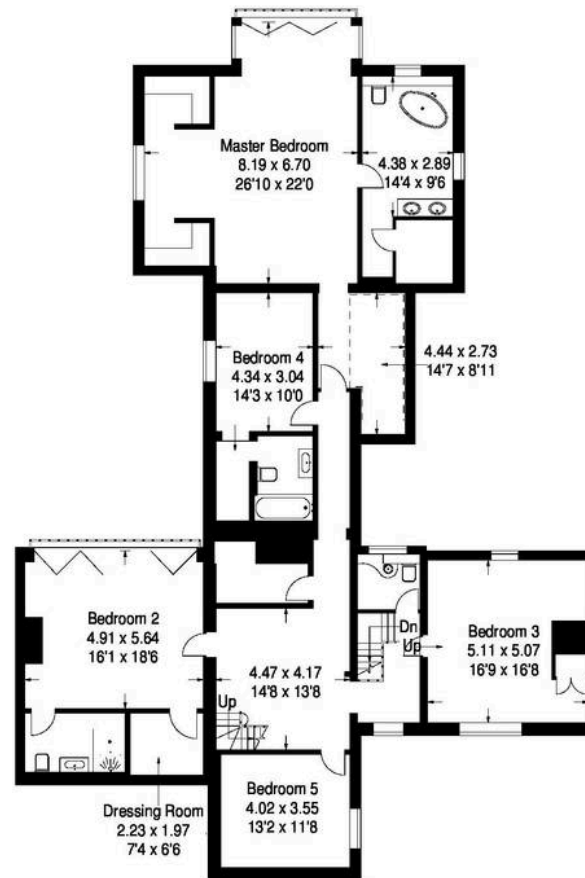
Oak Farmhouse, School Lane, Ollerton, Knutsford, Cheshire.



Gross internal area (approx) :-  
 528 sq m / 5680 sq ft  
 Outbuildings (approx) :-  
 244 sq m / 2624 sq ft  
 Total 772 sq m / 8304 sq ft

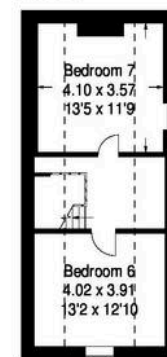


Ground Floor



First Floor

Reduced Headroom Below 1.50m / 5'



Second Floor

This plan is for layout guidance only. Drawn in accordance with RICS guidelines. Not drawn to scale unless otherwise stated. Windows and doors are approximate. Whilst every care is taken in the preparation of this plan, please check all dimensions, shapes and compass bearings before making any decisions reliant upon them.





## Stuart Rushton & Company

Stuart Rushton & Co, 35 King Street – WA16 6DW

01565 757000

[enquiries@srushton.co.uk](mailto:enquiries@srushton.co.uk)

[www.srushton.co.uk](http://www.srushton.co.uk)



We are not authorised to make or give any representations or warranties in relation to the property either here or elsewhere. We assume no responsibility for any statement that may be made in these particulars, and they do not form part of any offer or contract and must not be relied upon as statements or representation of fact. Any areas, measurements or distances are approximate. The text, photographs and plans are for guidance only. Importantly, it should not be assumed that the property has all necessary planning, building regulations or other consents and we have not tested any services, equipment or facilities. Purchasers must satisfy themselves by inspection or otherwise.