

18 Bexton Road

Knutsford

A beautifully extended 4-bed end-terrace in Knutsford. Flooded with light, stunning kitchen/dining area, inviting lounge, period charm blended with contemporary style, landscaped gardens, prime location near town centre. Character, comfort, and convenience.

Council Tax band: D

Tenure: Freehold

EPC Energy Efficiency Rating: D

EPC Environmental Impact Rating: E

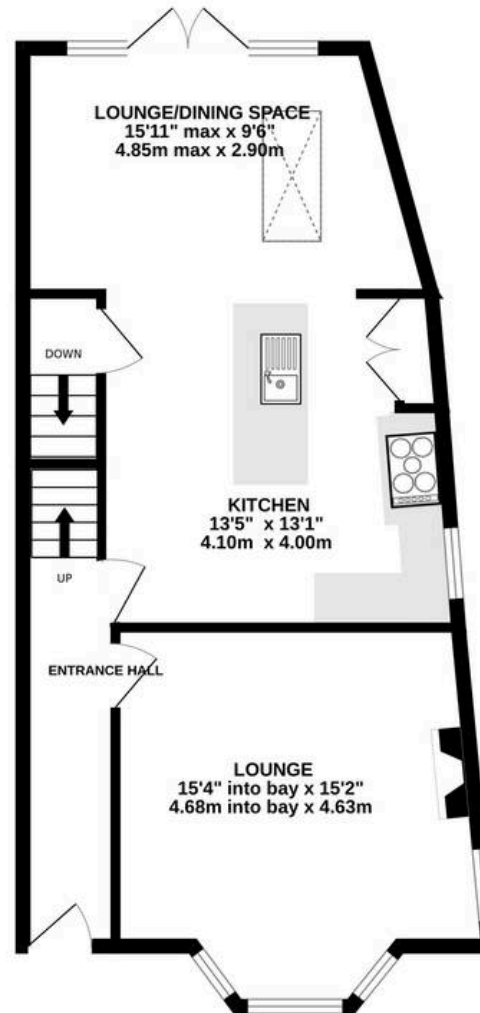
- Extended and beautifully finished throughout
- Spacious open plan living kitchen/diner with large central island
- Stunning lounge with a bay window and log burning stove
- Converted cellar chamber to provide a spacious bedroom with ensuite shower room
- Landscaped front and rear gardens
- Prime position within the town, just moments walk from the centre and local schools



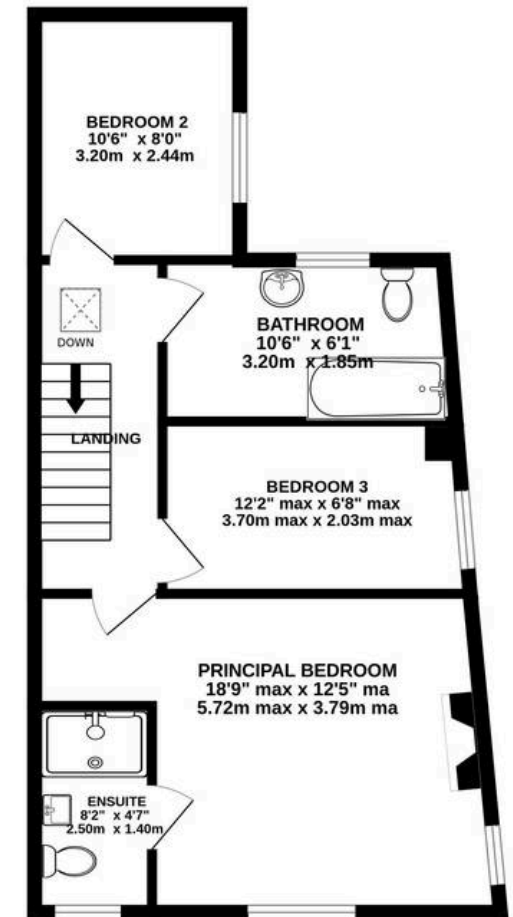
BASEMENT
233 sq.ft. (21.7 sq.m.) approx.



GROUND FLOOR
584 sq.ft. (54.3 sq.m.) approx.



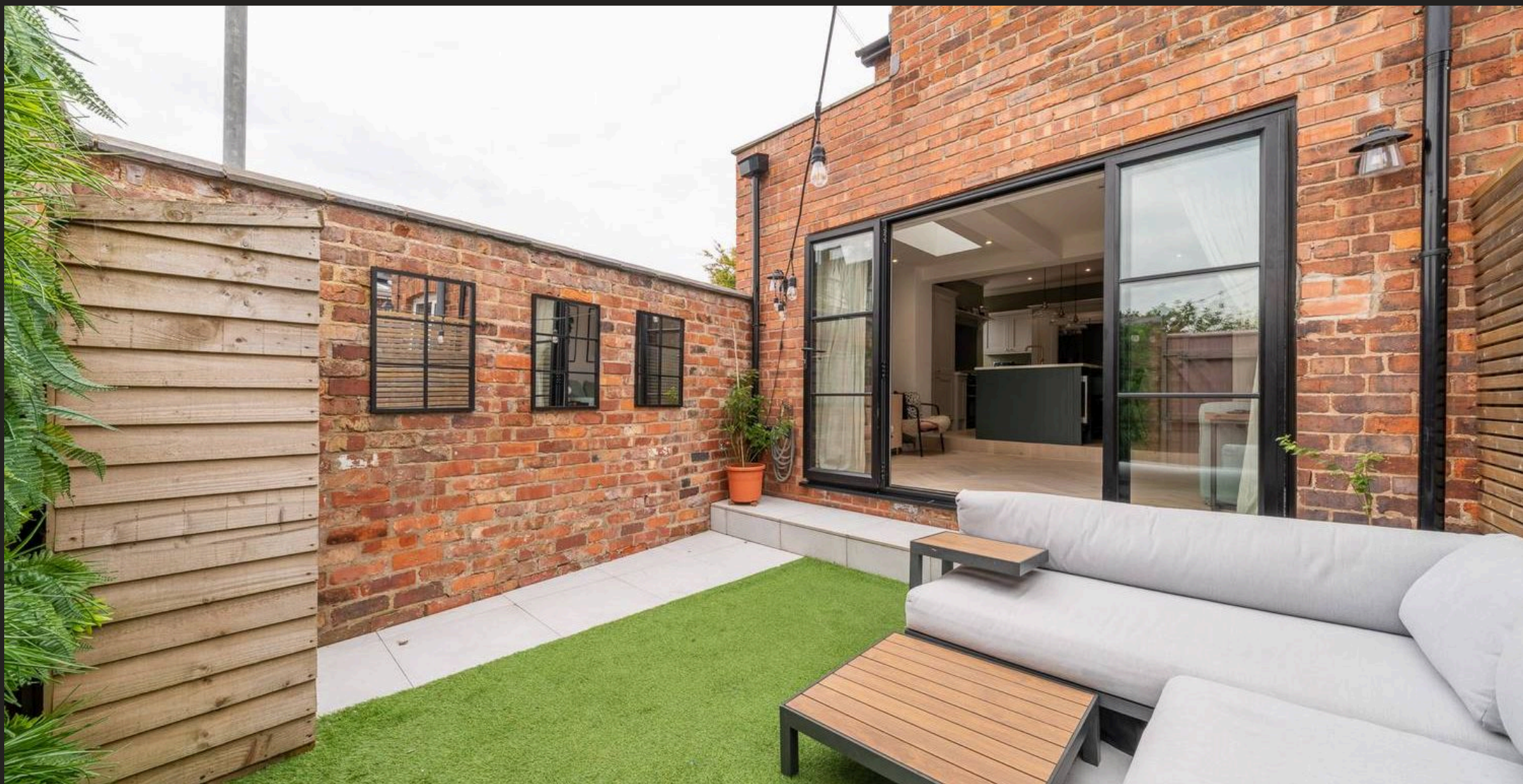
1ST FLOOR
504 sq.ft. (46.8 sq.m.) approx.



TOTAL FLOOR AREA : 1321 sq.ft. (122.8 sq.m.) approx.

Whilst every attempt has been made to ensure the accuracy of the floorplan contained here, measurements of doors, windows, rooms and any other items are approximate and no responsibility is taken for any error, omission or mis-statement. This plan is for illustrative purposes only and should be used as such by any prospective purchaser. The services, systems and appliances shown have not been tested and no guarantee as to their operability or efficiency can be given.

Made with Metropix ©2025



Stuart Rushton & Company

Stuart Rushton & Co, 35 King Street – WA16 6DW

01565 757000

enquiries@srushton.co.uk

www.srushton.co.uk



We are not authorised to make or give any representations or warranties in relation to the property either here or elsewhere. We assume no responsibility for any statement that may be made in these particulars, and they do not form part of any offer or contract and must not be relied upon as statements or representation of fact. Any areas, measurements or distances are approximate. The text, photographs and plans are for guidance only. Importantly, it should not be assumed that the property has all necessary planning, building regulations or other consents and we have not tested any services, equipment or facilities. Purchasers must satisfy themselves by inspection or otherwise.