













## 2 Badgers Rake

Mere Lane, Pickmere

A modern 3-storey home (1,200 sq. ft.) in village near Pickmere Lake. Ground floor: entrance hall, WC, kitchen/diner, living room. 3 beds, 1 bath on 1st floor. Top floor: principal suite with bedroom, dressing room, ensuite. Rear garden, driveway, garage. Perfect for family living and countryside walks, great transport links to Knutsford, Northwich, and motorway.

Council Tax band: E

Tenure: Freehold

EPC Energy Efficiency Rating: C

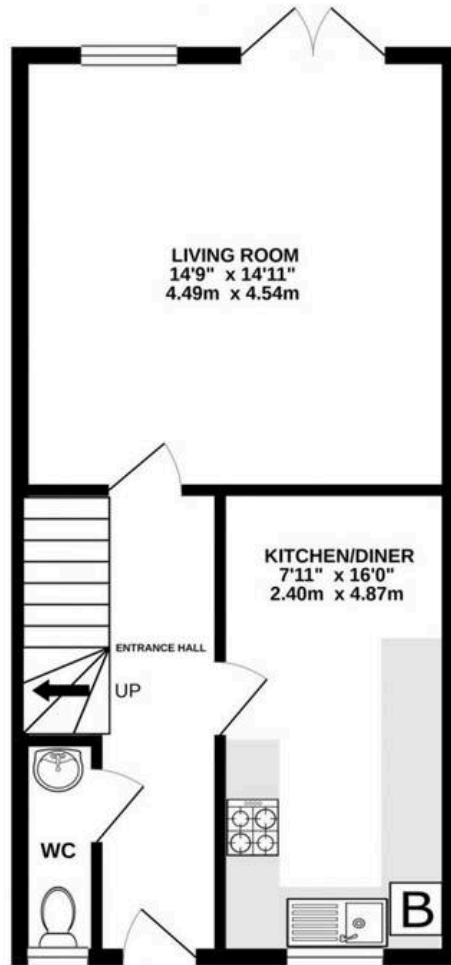
EPC Environmental Impact Rating: C

- Four bedrooms and two bathrooms, plus downstairs WC
- Modern three story living with nearly 1200 square feet of floor space
- Spacious principal bedroom suite with ensuite shower room and dressing room
- Parking space and single garage, plus good sized rear garden
- Moments walk from Pickmere Lake and lovely country walks
- A short drive from Knutsford and other notable towns and villages, plus the motorway network

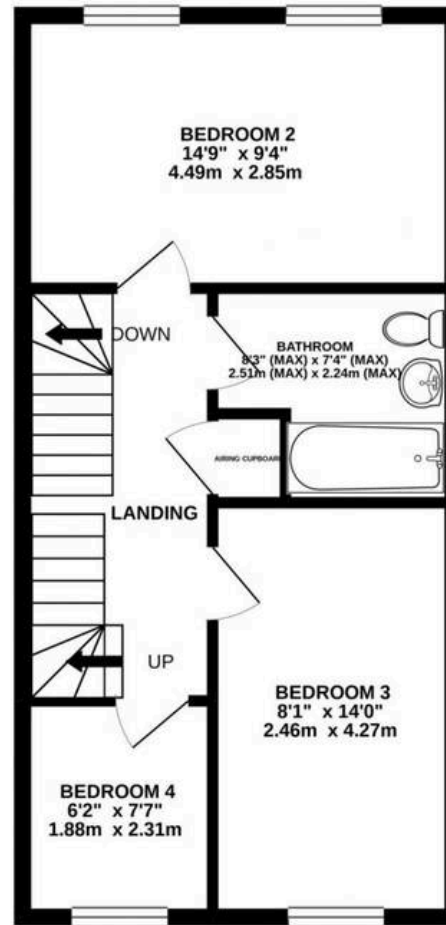




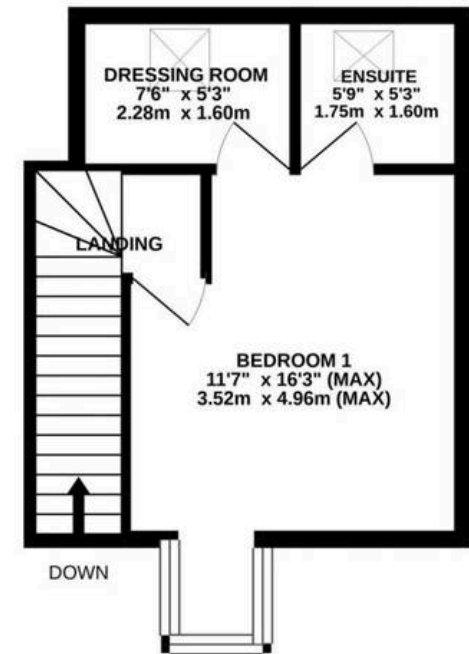
GROUND FLOOR  
455 sq.ft. (42.3 sq.m.) approx.



1ST FLOOR  
455 sq.ft. (42.3 sq.m.) approx.



2ND FLOOR  
268 sq.ft. (24.9 sq.m.) approx.



TOTAL FLOOR AREA : 1177 sq.ft. (109.4 sq.m.) approx.

Whilst every attempt has been made to ensure the accuracy of the floorplan contained here, measurements of doors, windows, rooms and any other items are approximate and no responsibility is taken for any error, omission or mis-statement. This plan is for illustrative purposes only and should be used as such by any prospective purchaser. The services, systems and appliances shown have not been tested and no guarantee as to their operability or efficiency can be given.

Made with Metropix ©2020





## Stuart Rushton & Company

Stuart Rushton & Co, 35 King Street – WA16 6DW

01565 757000

[enquiries@srushton.co.uk](mailto:enquiries@srushton.co.uk)

[www.srushton.co.uk](http://www.srushton.co.uk)



We are not authorised to make or give any representations or warranties in relation to the property either here or elsewhere. We assume no responsibility for any statement that may be made in these particulars, and they do not form part of any offer or contract and must not be relied upon as statements or representation of fact. Any areas, measurements or distances are approximate. The text, photographs and plans are for guidance only. Importantly, it should not be assumed that the property has all necessary planning, building regulations or other consents and we have not tested any services, equipment or facilities. Purchasers must satisfy themselves by inspection or otherwise.