







28 Stanley Road

Knutsford

A charming 2-bed mid-terraced house in town centre offers convenience and character. Quaint cottage style, near amenities and transport links. Close to The Heath for nature lovers. Ideal urban lifestyle.

Council Tax band: C

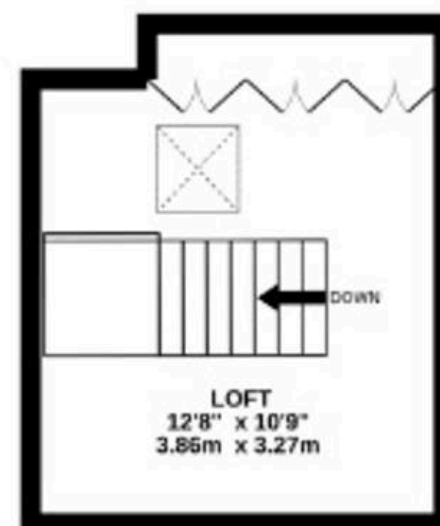
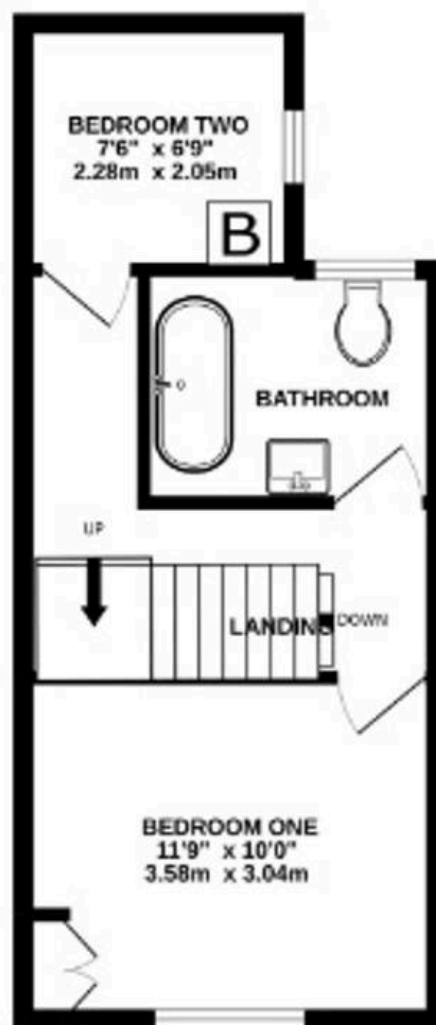
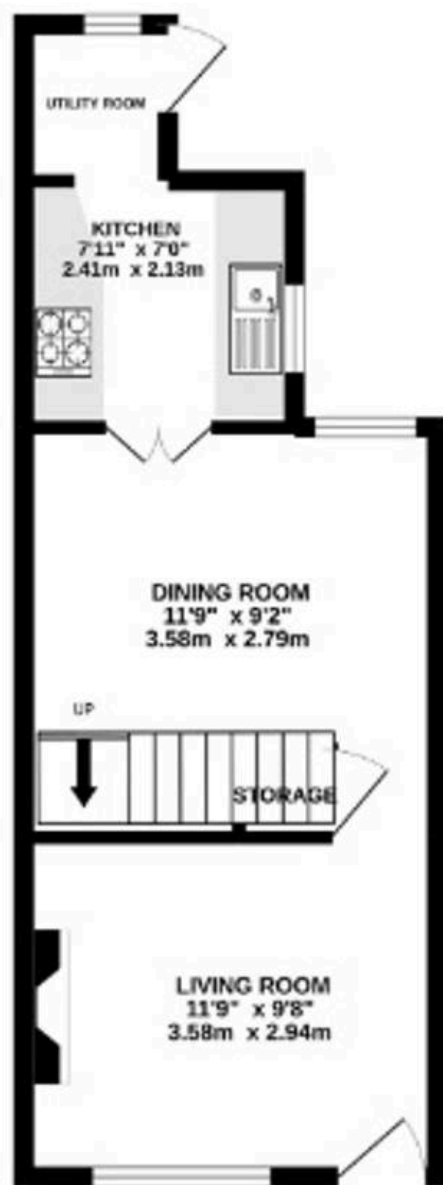
Tenure: Freehold

EPC Energy Efficiency Rating: E

EPC Environmental Impact Rating: E

- Town centre period terrace home
- Just a few minutes walk from a wide selection of amenities and transport links
- Moments from The Heath, ideal for dog walking
- Well-presented cottage style accommodation





TOTAL FLOOR AREA : 788 sq.ft. (73.2 sq.m.) approx.
Measurements are approximate. Not to scale. Illustrative purposes only.
Made with Metropix 02022



Stuart Rushton & Company

Stuart Rushton & Co, 35 King Street – WA16 6DW

01565 757000

enquiries@srushton.co.uk

www.srushton.co.uk



We are not authorised to make or give any representations or warranties in relation to the property either here or elsewhere. We assume no responsibility for any statement that may be made in these particulars, and they do not form part of any offer or contract and must not be relied upon as statements or representation of fact. Any areas, measurements or distances are approximate. The text, photographs and plans are for guidance only. Importantly, it should not be assumed that the property has all necessary planning, building regulations or other consents and we have not tested any services, equipment or facilities. Purchasers must satisfy themselves by inspection or otherwise.