









# The Maples Holmes Chapel Road

Over Peover, Knutsford

Extended and beautifully refurbished detached bungalow extending to approximately 2,300 sq ft occupying a pleasant semi-rural position close to Knutsford

Council Tax band: TBD

Tenure: Freehold

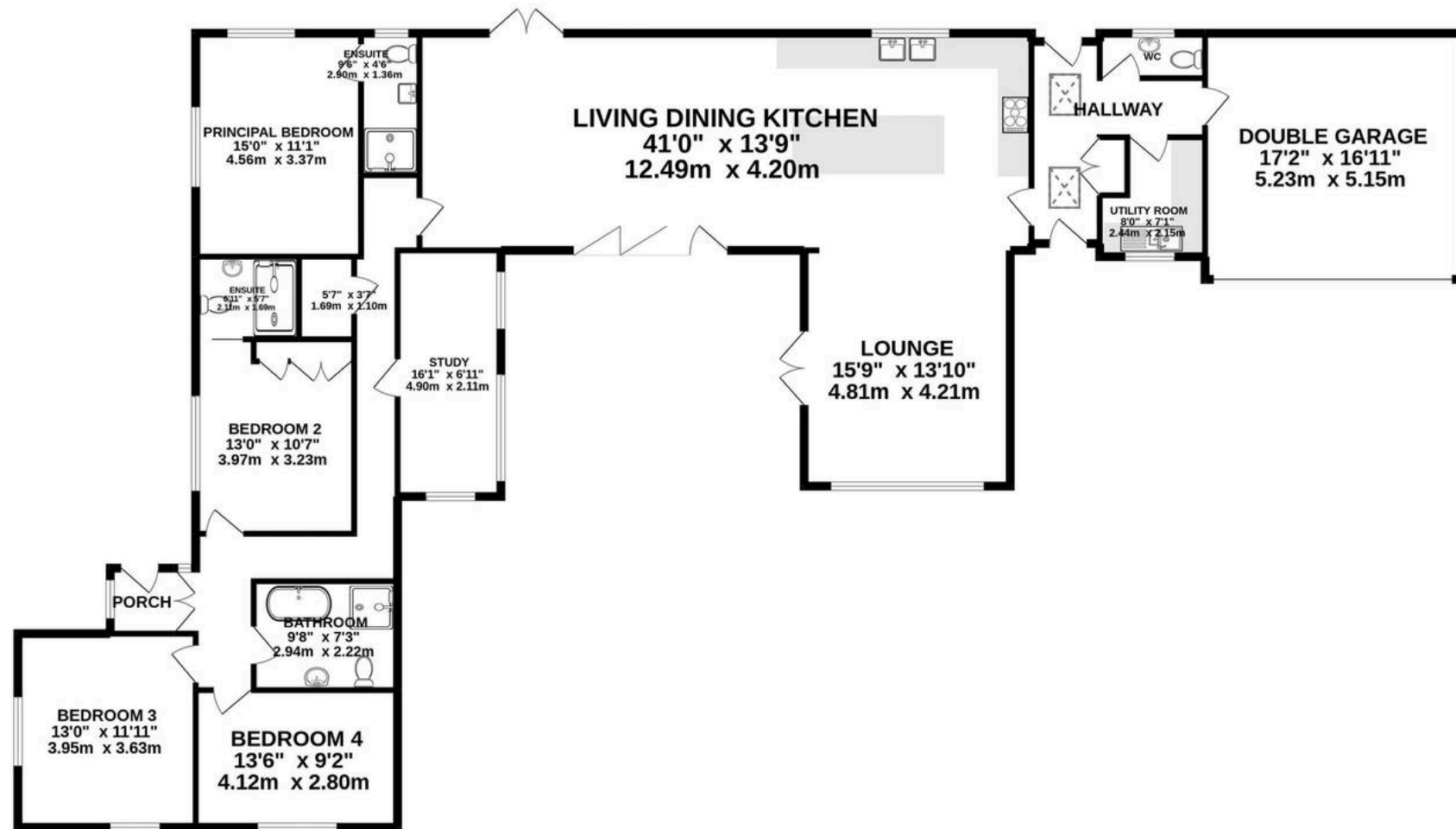
EPC Energy Efficiency Rating: F

EPC Environmental Impact Rating: D

- Substantial individual detached bungalow
- Beautifully refurbished and extended accommodation
- High quality, open-plan 41' living kitchen
- Spacious lounge area with large feature window and vaulted ceiling
- 4 excellent bedrooms (2 with en-suite facilities)
- Beautiful bathroom with free-standing bath and separate shower enclosure
- Lovely, established gardens



2296 sq.ft. (213.3 sq.m.) approx.



TOTAL FLOOR AREA : 2296 sq.ft. (213.3 sq.m.) approx.

Whilst every attempt has been made to ensure the accuracy of the floorplan contained here, measurements of doors, windows, rooms and any other items are approximate and no responsibility is taken for any error, omission or mis-statement. This plan is for illustrative purposes only and should be used as such by any prospective purchaser. The services, systems and appliances shown have not been tested and no guarantee as to their operability or efficiency can be given.  
Made with Metropix ©2022





## Stuart Rushton & Company

Stuart Rushton & Co, 35 King Street – WA16 6DW

01565 757000

[enquiries@srushton.co.uk](mailto:enquiries@srushton.co.uk)

[www.srushton.co.uk](http://www.srushton.co.uk)



We are not authorised to make or give any representations or warranties in relation to the property either here or elsewhere. We assume no responsibility for any statement that may be made in these particulars, and they do not form part of any offer or contract and must not be relied upon as statements or representation of fact. Any areas, measurements or distances are approximate. The text, photographs and plans are for guidance only. Importantly, it should not be assumed that the property has all necessary planning, building regulations or other consents and we have not tested any services, equipment or facilities. Purchasers must satisfy themselves by inspection or otherwise.