





Woodheath Cottage, Whitecroft Heath Road

Lower Withington

An extended, refurbished and beautifully presented detached period cottage situated in a stunning rural position on a pretty country lane, set within charming cottage gardens of nearly two thirds of an acre, together with an excellent range of immaculate adjacent brick outbuildings, superb fenced flat paddocks with arena, in all just over 7 acres.

Council Tax band: G

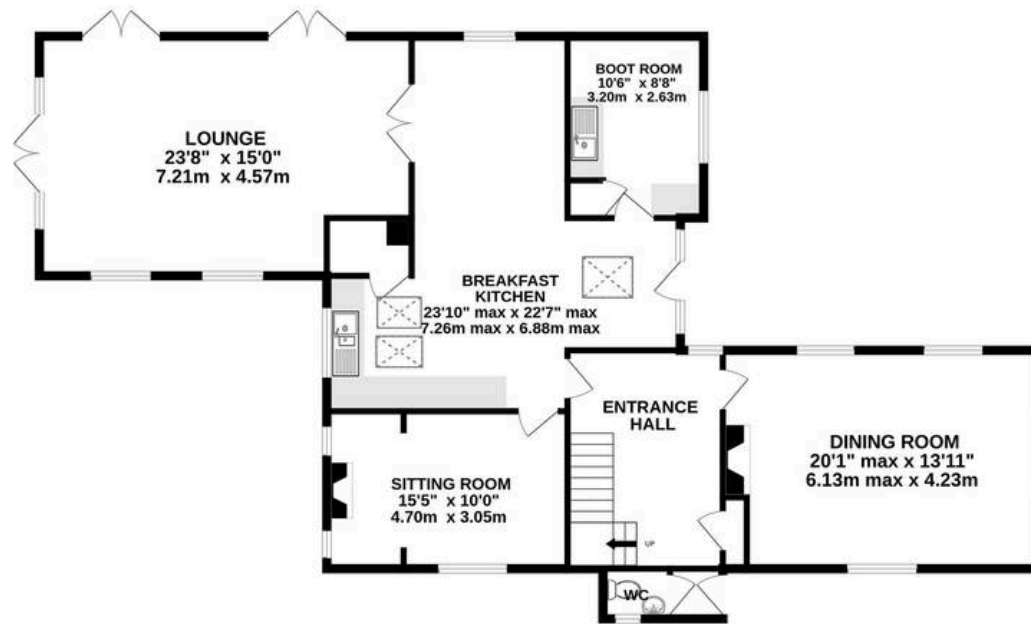
Tenure: Freehold

EPC Energy Efficiency Rating: F

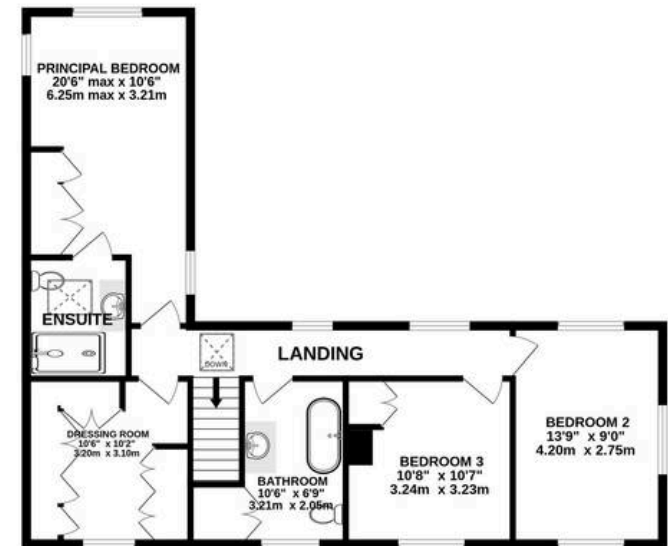
- A beautifully refurbished detached period cottage with land and outbuildings, in all about 7 acres
- Lovely four bedroom house of 2132 square feet, superb range of brick buildings with stables and garaging
- Stunning rural location on a quite country lane
- Lovely gardens of 0.6 acres, fenced paddocks and high quality arena, in all just over 7 acres
- Ideal for those with equestrian interests



GROUND FLOOR
1475 sq.ft. (137.0 sq.m.) approx.



1ST FLOOR
797 sq.ft. (74.0 sq.m.) approx.



TOTAL FLOOR AREA : 2271 sq.ft. (211.0 sq.m.) approx.

Whilst every attempt has been made to ensure the accuracy of the floorplan contained here, measurements of doors, windows, rooms and any other items are approximate and no responsibility is taken for any error, omission or mis-statement. This plan is for illustrative purposes only and should be used as such by any prospective purchaser. The services, systems and appliances shown have not been tested and no guarantee as to their operability or efficiency can be given.

Made with Metropix ©2025



Stuart Rushton & Company

Stuart Rushton & Co, 35 King Street – WA16 6DW

01565 757000

enquiries@srushton.co.uk

www.srushton.co.uk



We are not authorised to make or give any representations or warranties in relation to the property either here or elsewhere. We assume no responsibility for any statement that may be made in these particulars, and they do not form part of any offer or contract and must not be relied upon as statements or representation of fact. Any areas, measurements or distances are approximate. The text, photographs and plans are for guidance only. Importantly, it should not be assumed that the property has all necessary planning, building regulations or other consents and we have not tested any services, equipment or facilities. Purchasers must satisfy themselves by inspection or otherwise.