









# 5 Bexton Road

Knutsford

A very attractive Victorian end of terrace house within a stones throw of Princess Street and the town, enjoying excellent parking on a private driveway and a large lawned rear garden.

Council Tax band: D

Tenure: Freehold

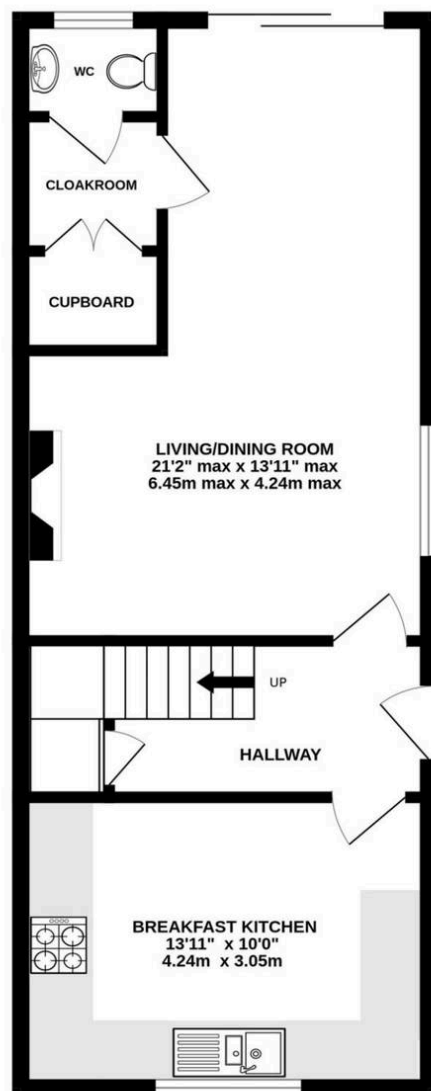
EPC Energy Efficiency Rating: F

- Attractive period end of terraced house in the middle of the town
- Private driveway and lawned rear garden
- Large double reception room and two bedrooms

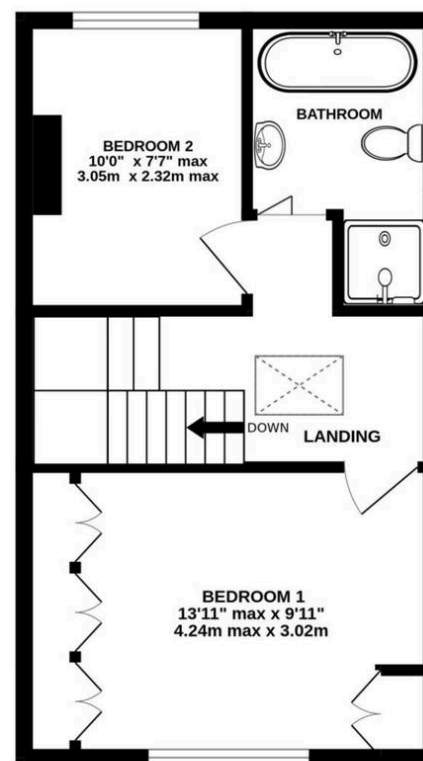




GROUND FLOOR  
501 sq.ft. (46.6 sq.m.) approx.



1ST FLOOR  
346 sq.ft. (32.2 sq.m.) approx.



TOTAL FLOOR AREA : 848 sq.ft. (78.7 sq.m.) approx.  
Measurements are approximate. Not to scale. Illustrative purposes only  
Made with Metropix ©2024





## Stuart Rushton & Company

Stuart Rushton & Co, 35 King Street – WA16 6DW

01565 757000

[enquiries@srushton.co.uk](mailto:enquiries@srushton.co.uk)

[www.srushton.co.uk](http://www.srushton.co.uk)



We are not authorised to make or give any representations or warranties in relation to the property either here or elsewhere. We assume no responsibility for any statement that may be made in these particulars, and they do not form part of any offer or contract and must not be relied upon as statements or representation of fact. Any areas, measurements or distances are approximate. The text, photographs and plans are for guidance only. Importantly, it should not be assumed that the property has all necessary planning, building regulations or other consents and we have not tested any services, equipment or facilities. Purchasers must satisfy themselves by inspection or otherwise.