





40 Fletsand Road

Wilmslow

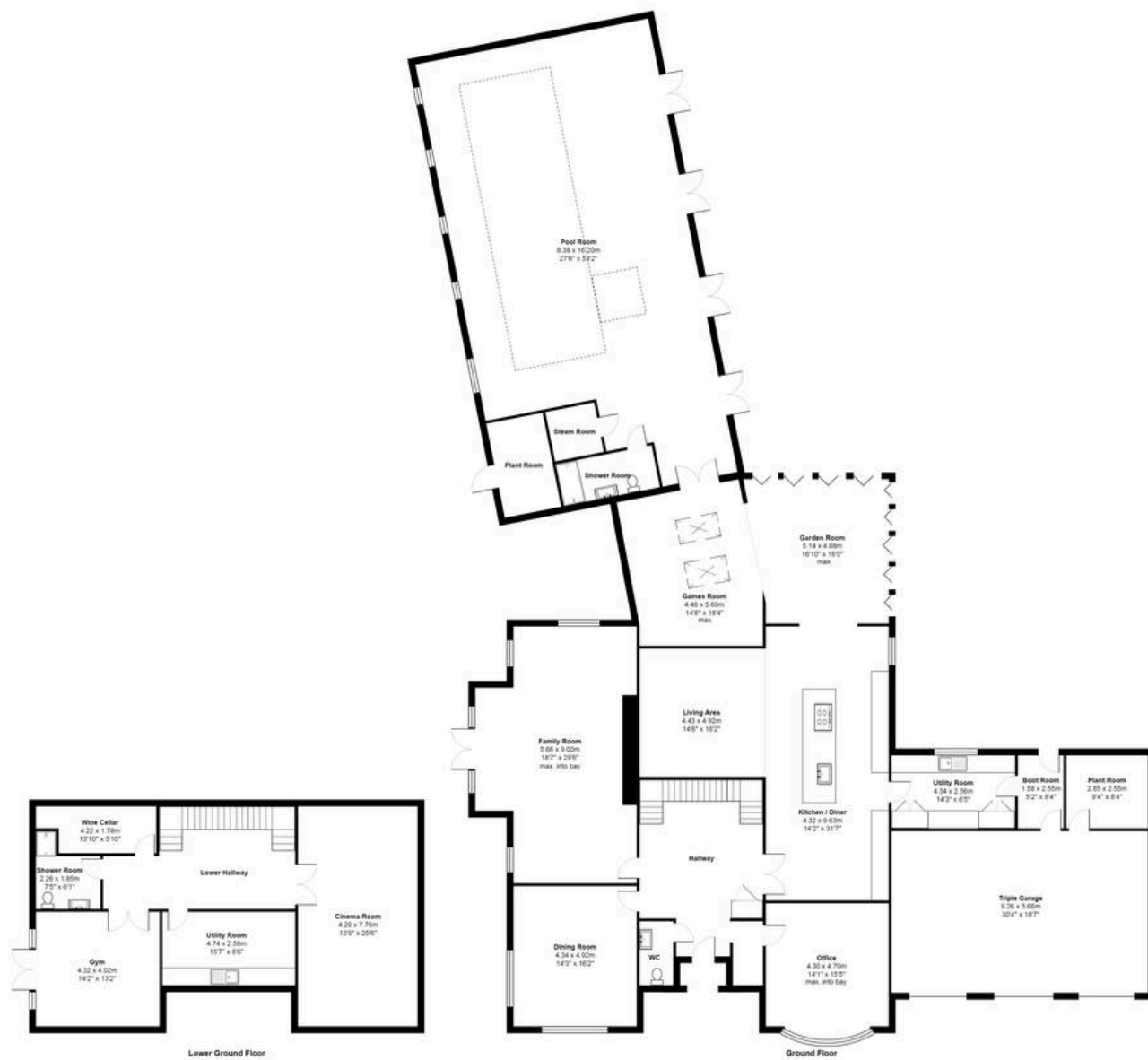
An exceptional, modern detached house situated on Wilmslow's premier road standing in particularly spacious, gated gardens and grounds including a triple garage – in all about 0.6 acres.
Council Tax band: H

Tenure: Freehold

EPC Energy Efficiency Rating: C

- Exceptional 8200 square foot modern house with full leisure on Wilmslow's most sought after road
- Five bedrooms, seven bathrooms and seven reception rooms
- Superb indoor swimming pool complex
- Gated grounds including triple garage, in all about 0.6 acres
- Walking distance to Wilmslow town centre and the railway station





Total Area: 763.1 m² / 8214 ft²
 All measurements are approximate and for display purposes only



Stuart Rushton & Company

Stuart Rushton & Co, 35 King Street – WA16 6DW

01565 757000

enquiries@srushton.co.uk

www.srushton.co.uk



We are not authorised to make or give any representations or warranties in relation to the property either here or elsewhere. We assume no responsibility for any statement that may be made in these particulars, and they do not form part of any offer or contract and must not be relied upon as statements or representation of fact. Any areas, measurements or distances are approximate. The text, photographs and plans are for guidance only. Importantly, it should not be assumed that the property has all necessary planning, building regulations or other consents and we have not tested any services, equipment or facilities. Purchasers must satisfy themselves by inspection or otherwise.