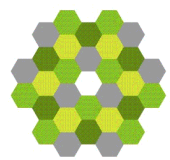


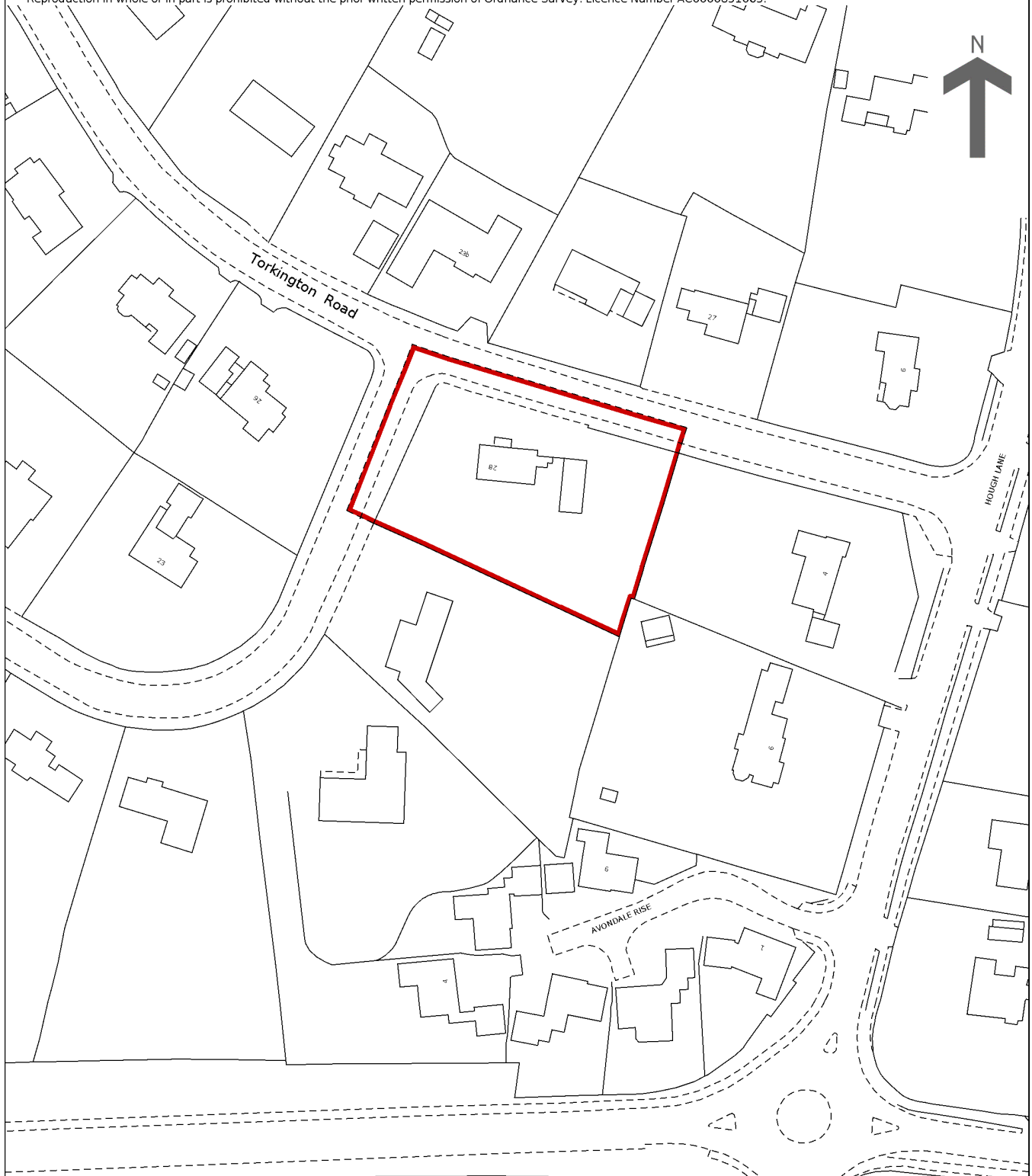
HM Land Registry

Current title plan

Title number **CH534941**
Ordnance Survey map reference **SJ8580NE**
Scale **1:1250**
Administrative area **Cheshire East**



©Crown Copyright. Produced by HM Land Registry.
Reproduction in whole or in part is prohibited without the prior written permission of Ordnance Survey. Licence Number AC0000851063.



This is a print of the view of the title plan obtained from HM Land Registry showing the state of the title plan on 21 February 2025 at 14:32:47. This title plan shows the general position, not the exact line, of the boundaries. It may be subject to distortions in scale. Measurements scaled from this plan may not match measurements between the same points on the ground.

This title is dealt with by HM Land Registry, Birkenhead Office.