

Oakfield Plumley Moor Road

Plumley, Knutsford

A beautifully refurbished detached Victorian village house with original converted coach house in semi-rural location near Knutsford. Spacious accommodation, manicured gardens, flexible living/work spaces, stunning features. Close to amenities and transport links.

Council Tax band: G

Tenure: Freehold

EPC Energy Efficiency Rating: D

EPC Environmental Impact Rating: E

- Large refurbished Edwardian village house with excellent detached coach house
- In all six bedrooms, five reception rooms and three bathrooms
- Very attractive gated landscaped grounds
- Superb rural location to the South of Knutsford town

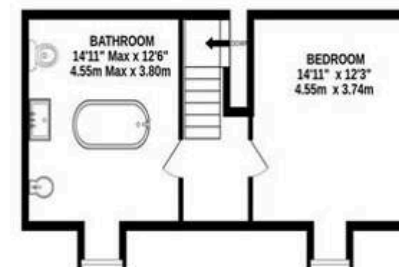
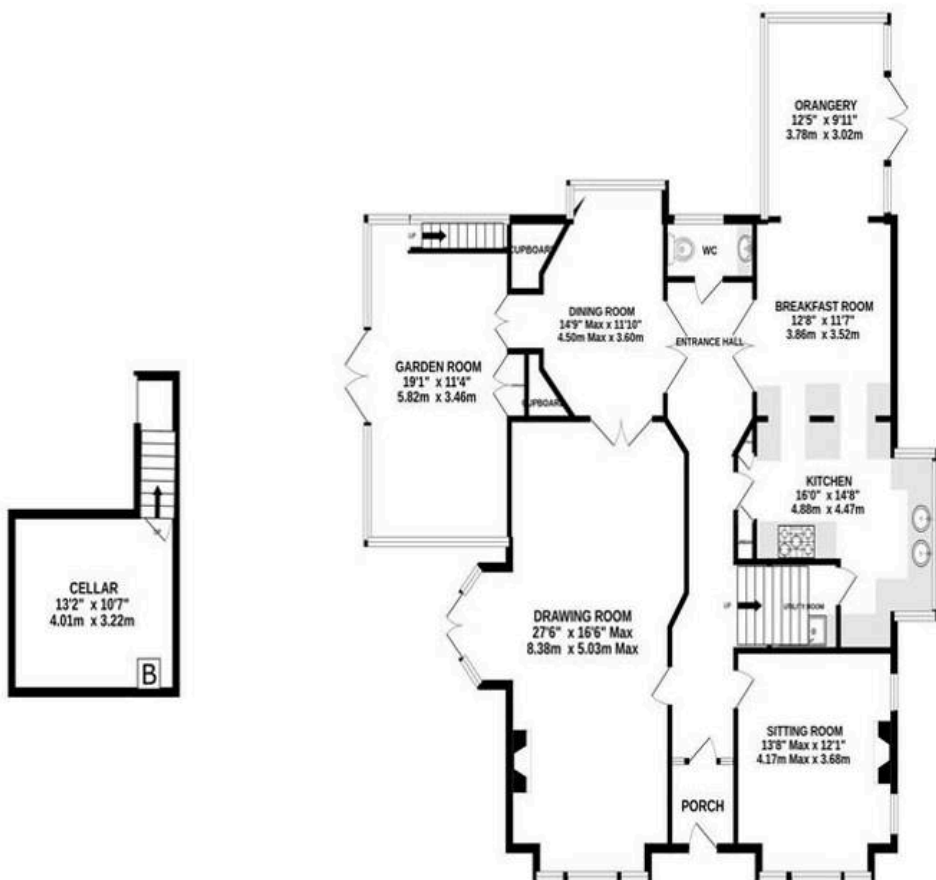


BASEMENT
164 sq.ft. (15.3 sq.m.) approx.

GROUND FLOOR
1572 sq.ft. (146.0 sq.m.) approx.

1ST FLOOR
1228 sq.ft. (113.1 sq.m.) approx.

2ND FLOOR
390 sq.ft. (36.2 sq.m.) approx.

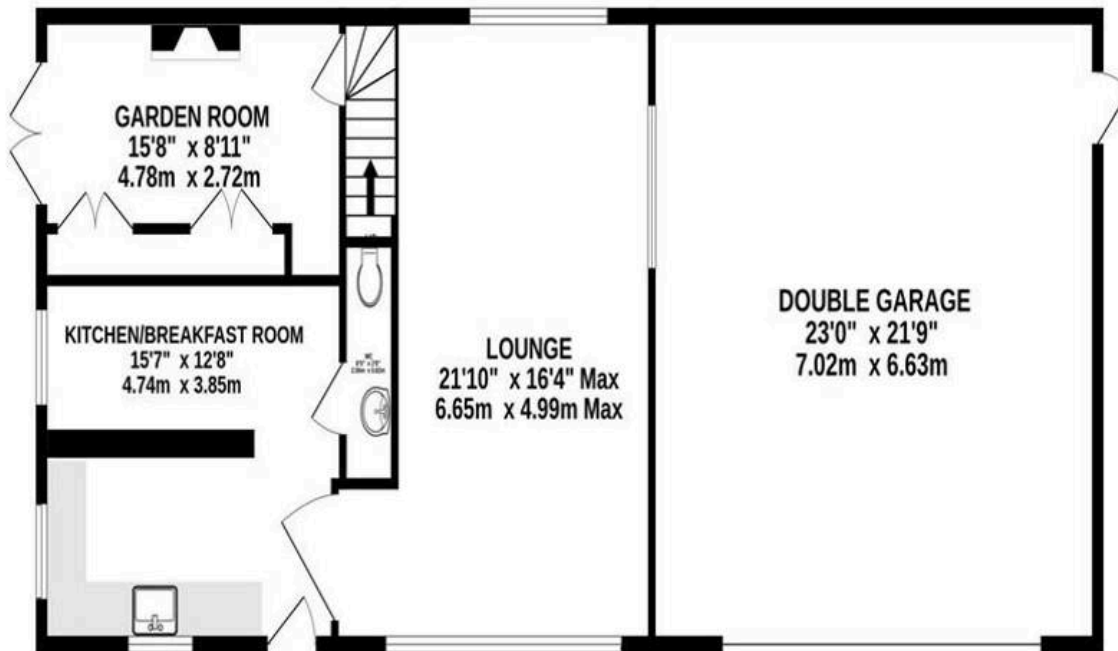


TOTAL FLOOR AREA : 3343 sq.ft. (310.6 sq.m.) approx.

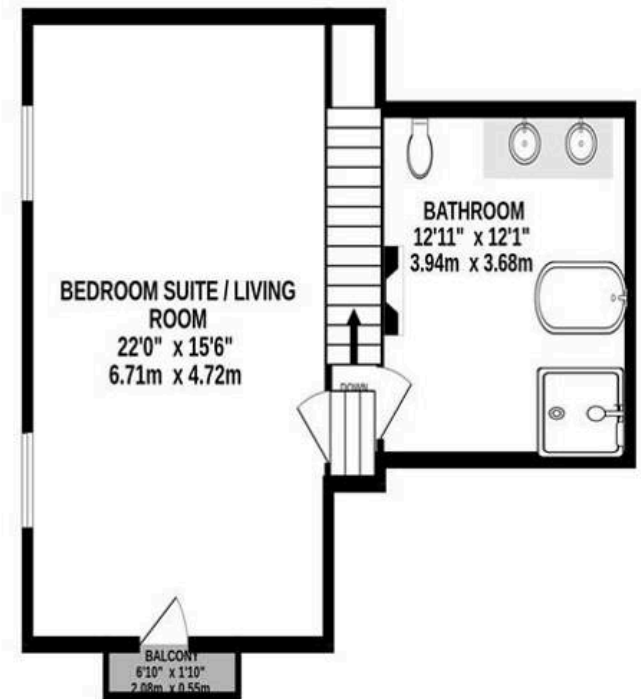
Measurements are approximate. Not to scale. Illustrative purposes only

Made with Metropix ©2023

GROUND FLOOR
1173 sq.ft. (109.0 sq.m.) approx.



1ST FLOOR
537 sq.ft. (49.9 sq.m.) approx.



TOTAL FLOOR AREA : 1710 sq.ft. (158.9 sq.m.) approx.

Measurements are approximate. Not to scale. Illustrative purposes only
Made with Metropix ©2023





Stuart Rushton & Company

Stuart Rushton & Co, 35 King Street – WA16 6DW

01565 757000

enquiries@srushton.co.uk

www.srushton.co.uk



We are not authorised to make or give any representations or warranties in relation to the property either here or elsewhere. We assume no responsibility for any statement that may be made in these particulars, and they do not form part of any offer or contract and must not be relied upon as statements or representation of fact. Any areas, measurements or distances are approximate. The text, photographs and plans are for guidance only. Importantly, it should not be assumed that the property has all necessary planning, building regulations or other consents and we have not tested any services, equipment or facilities. Purchasers must satisfy themselves by inspection or otherwise.