



# Flat 14 Ash Court

King Edward Road, Knutsford

A well maintained one bedroom ground floor retirement apartment, situated within an extremely popular town centre development in a central location, adjacent to the bus station and Booths supermarket, and only a short flat walk to Princess Street.

Council Tax band: B

Tenure: Leasehold

EPC Energy Efficiency Rating: C

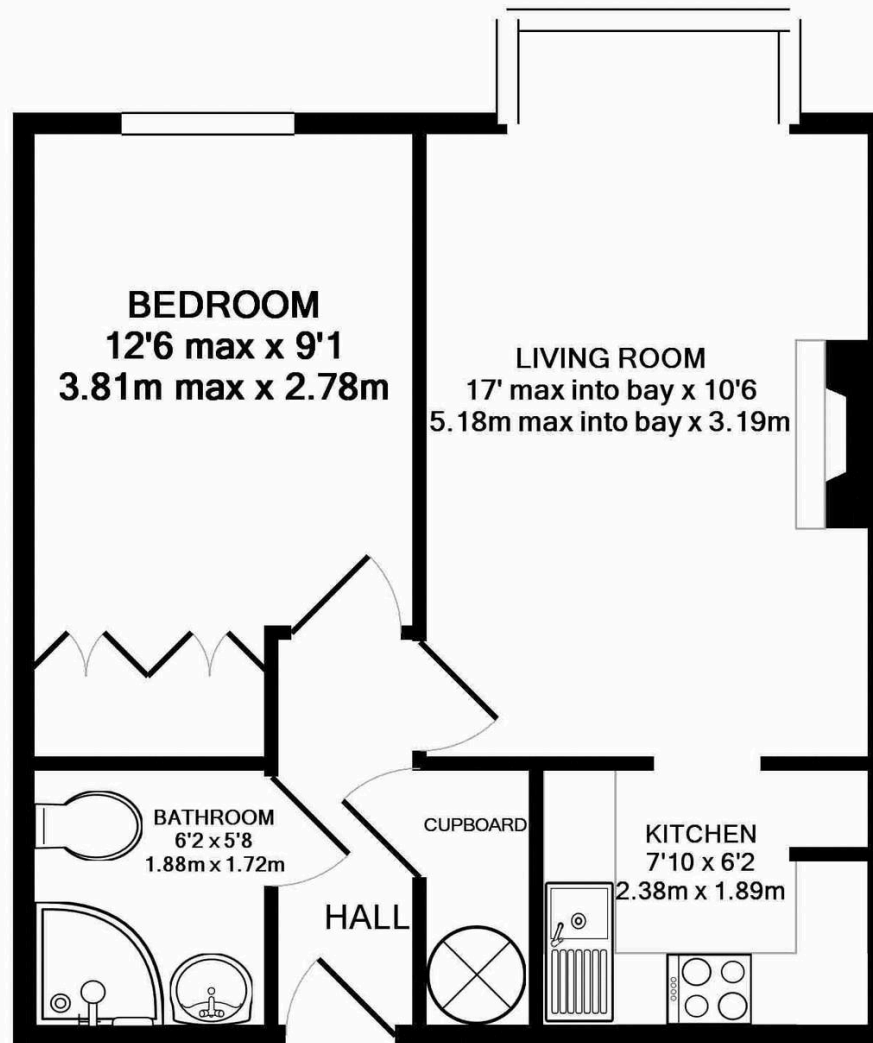
EPC Environmental Impact Rating: D

Service charge: circa £360 PCM

- One bedroom ground floor retirement apartment
- Highly desirable town centre development
- Situated close to the shops and adjacent to Booths supermarket
- Well presented accommodation
- Communal facilities on site include a lounge, kitchen & laundry
- Off road parking for residents







**TOTAL APPROX. FLOOR AREA 421 SQ.FT. (39.1 SQ.M.)**

Whilst every attempt has been made to ensure the accuracy of the floor plan contained here, measurements of doors, windows, rooms and any other items are approximate and no responsibility is taken for any error, omission, or mis-statement. This plan is for illustrative purposes only and should be used as such by any prospective purchaser. The services, systems and appliances shown have not been tested and no guarantee as to their operability or efficiency can be given

Made with Metropix ©2017





## Stuart Rushton & Company

Stuart Rushton & Co, 35 King Street – WA16 6DW

01565 757000

[enquiries@srushton.co.uk](mailto:enquiries@srushton.co.uk)

[www.srushton.co.uk](http://www.srushton.co.uk)



We are not authorised to make or give any representations or warranties in relation to the property either here or elsewhere. We assume no responsibility for any statement that may be made in these particulars, and they do not form part of any offer or contract and must not be relied upon as statements or representation of fact. Any areas, measurements or distances are approximate. The text, photographs and plans are for guidance only. Importantly, it should not be assumed that the property has all necessary planning, building regulations or other consents and we have not tested any services, equipment or facilities. Purchasers must satisfy themselves by inspection or otherwise.