







## Apt 2 Alison Park

Temple Road, Buxton

Luxury ground floor apartment in prestigious development near Pavilion Gardens. High-end finishes, spacious rooms, allocated parking and electric charging points. Ideal for sophisticated living in a tranquil yet convenient location.

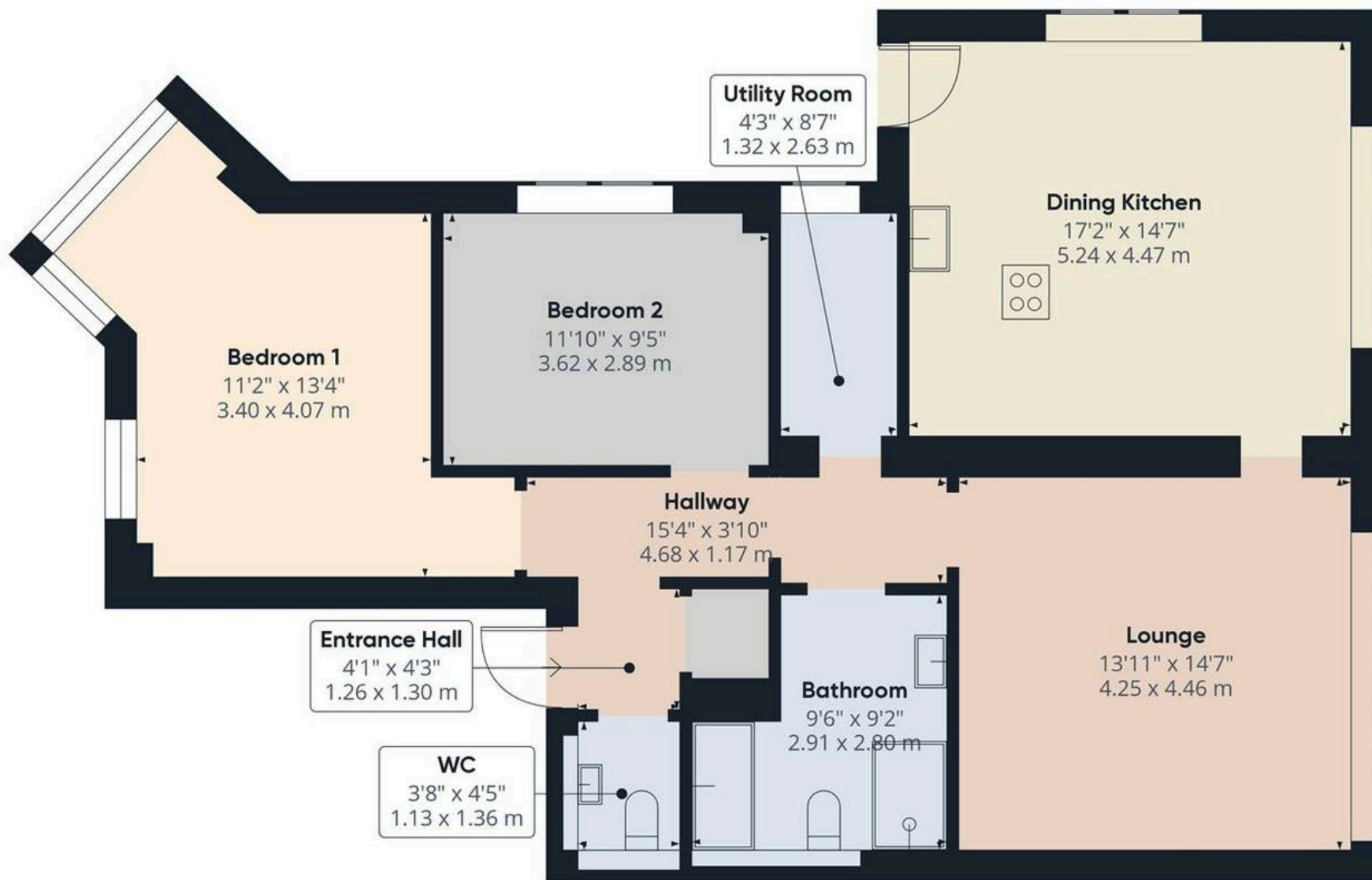
Council Tax band: TBD

Tenure: Freehold

- Impressive and exclusive development of luxury apartments
- Wonderful location within the town's Conservation area, close to Pavilion Gardens
- Quality and sympathetic conversion with high quality fixtures and fittings
- Well proportioned kitchen with quartz work surfaces and integrated Bosch appliances
- Large bathroom with stylish 3-piece suite and separate shower enclosure
- Allocated parking and electric charging points
- Mature communal grounds







Approximate total area<sup>(1)</sup>

996.63 ft<sup>2</sup>

92.59 m<sup>2</sup>

(1) Excluding balconies and terraces

While every attempt has been made to ensure accuracy, all measurements are approximate, not to scale. This floor plan is for illustrative purposes only.

Calculations are based on RICS IPMS 3C standard.

GIRAFFE360





## Stuart Rushton & Company

Stuart Rushton & Co, 35 King Street – WA16 6DW

01565 757000

[enquiries@srushton.co.uk](mailto:enquiries@srushton.co.uk)

[www.srushton.co.uk](http://www.srushton.co.uk)



We are not authorised to make or give any representations or warranties in relation to the property either here or elsewhere. We assume no responsibility for any statement that may be made in these particulars, and they do not form part of any offer or contract and must not be relied upon as statements or representation of fact. Any areas, measurements or distances are approximate. The text, photographs and plans are for guidance only. Importantly, it should not be assumed that the property has all necessary planning, building regulations or other consents and we have not tested any services, equipment or facilities. Purchasers must satisfy themselves by inspection or otherwise.