





Long Meadow Snelson Lane

Marthall, Knutsford

An impressive detached country house in a wonderful position close to Chelford and Over Peover villages, standing in lovely landscaped gardens and grounds with surrounding paddocks and a useful small range of outbuildings, and an outdoor swimming pool, in all about 7.7 acres or thereabouts.

Council Tax band: H

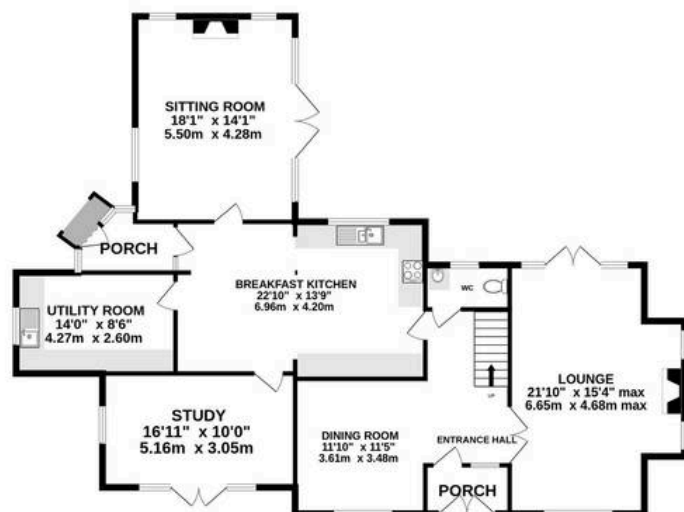
Tenure: Freehold

EPC Energy Efficiency Rating: F

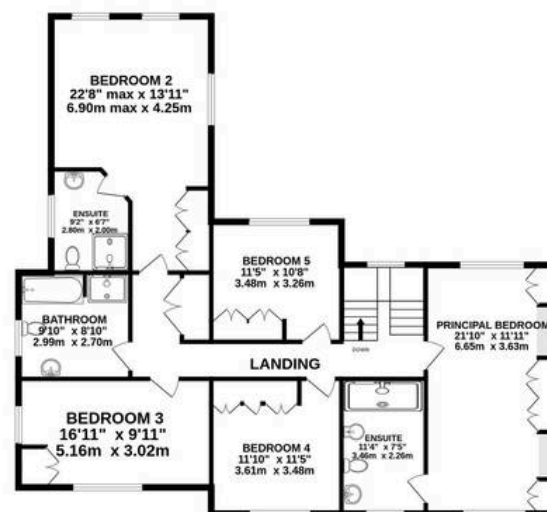
- Attractive country house in lovely private gardens and grounds, in all nearly 8 acres
- Five bedrooms, three bathrooms, and four reception rooms
- Excellent gated driveway, range of outbuildings, outdoor swimming pool



GROUND FLOOR
1467 sq.ft. (136.3 sq.m.) approx.



1ST FLOOR
1348 sq.ft. (125.2 sq.m.) approx.



OUTBUILDINGS
1525 sq.ft. (141.6 sq.m.) approx.



TOTAL FLOOR AREA : 4339 sq.ft. (403.1 sq.m.) approx.

Whilst every attempt has been made to ensure the accuracy of the floorplan contained here, measurements of doors, windows, rooms and any other items are approximate and no responsibility is taken for any error, omission or mis-statement. This plan is for illustrative purposes only and should be used as such by any prospective purchaser. The services, systems and appliances shown have not been tested and no guarantee as to their operability or efficiency can be given.

Made with Metropix ©2025



Stuart Rushton & Company

Stuart Rushton & Co, 35 King Street – WA16 6DW

01565 757000

enquiries@srushton.co.uk

www.srushton.co.uk



We are not authorised to make or give any representations or warranties in relation to the property either here or elsewhere. We assume no responsibility for any statement that may be made in these particulars, and they do not form part of any offer or contract and must not be relied upon as statements or representation of fact. Any areas, measurements or distances are approximate. The text, photographs and plans are for guidance only. Importantly, it should not be assumed that the property has all necessary planning, building regulations or other consents and we have not tested any services, equipment or facilities. Purchasers must satisfy themselves by inspection or otherwise.