





Withington House Whisterfield Lane

Lower Withington, Macclesfield

Stunning lakeside period home with 3,500 sq. ft. of living space over 4 floors. Beautiful gardens, stables, and paddock all set on about 4.25 acres of land.

Council Tax band: H

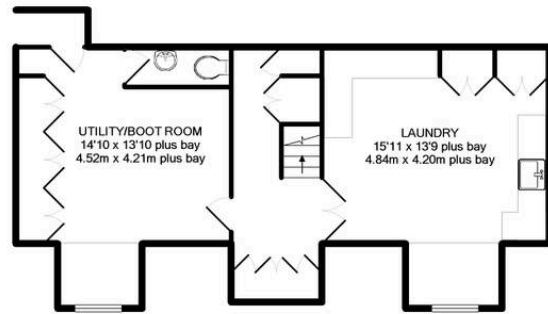
Tenure: Freehold

EPC Energy Efficiency Rating: F

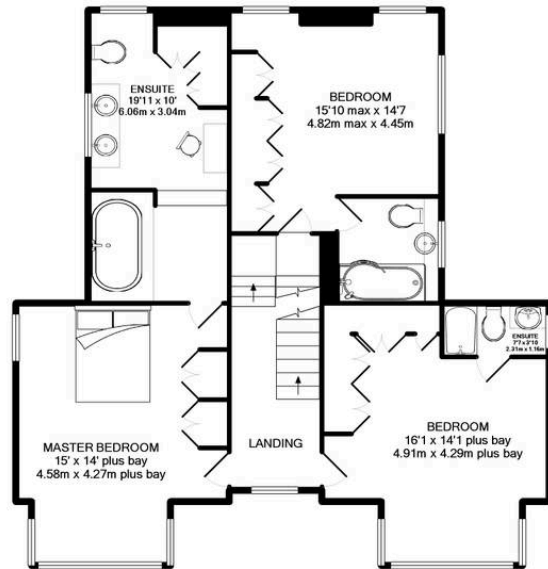
EPC Environmental Impact Rating:

- Large and elegant period country house with glorious lake views
- Formal gardens and grounds, including paddock, extending to 4.25 acres
- Beautifully proportioned, character accommodation extending to almost 4,500sq feet
- 5/6 bedrooms, 3 with en-suite facilities
- 3 excellent reception rooms and spacious kitchen
- Detached coach house incorporating stabling
- Wonderful rural position within convenient reach of Alderley Edge, Chelford, Knutsford and Macclesfield

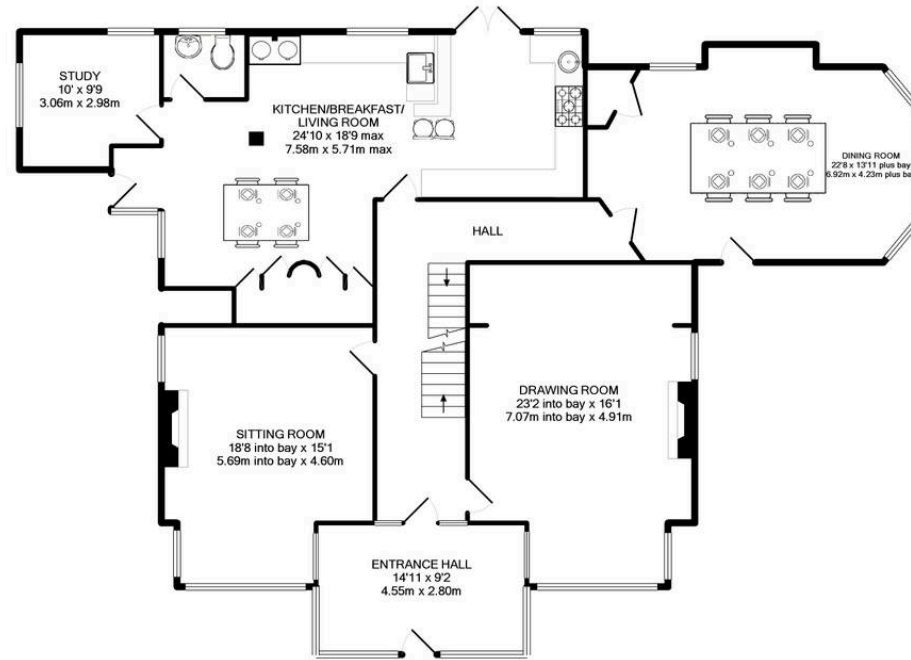




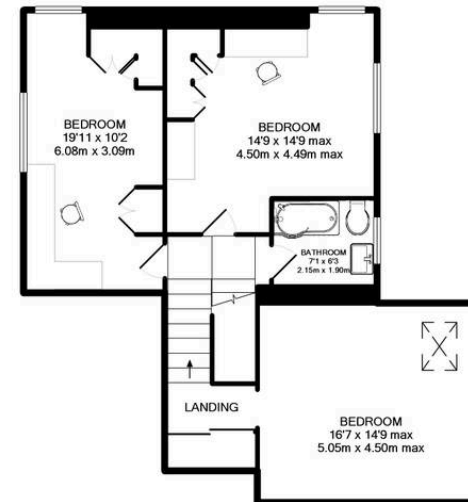
BASEMENT LEVEL
APPROX. FLOOR
AREA 624 SQ. FT.
(57.9 SQ.M.)



1ST FLOOR
APPROX. FLOOR
AREA 1118 SQ. FT.
(103.8 SQ.M.)



GROUND FLOOR
APPROX. FLOOR
AREA 1854 SQ. FT.
(172.2 SQ.M.)



2ND FLOOR
APPROX. FLOOR
AREA 788 SQ. FT.
(73.2 SQ.M.)

TOTAL APPROX. FLOOR AREA 4384 SQ. FT. (407.3 SQ.M.)

Whilst every attempt has been made to ensure the accuracy of the floor plan contained here, measurements of doors, windows, rooms and any other items are approximate and no responsibility is taken for any error, omission, or mis-statement. This plan is for illustrative purposes only and should be used as such by any prospective purchaser. The services, systems and appliances shown have not been tested and no guarantee as to their operability or efficiency can be given.

Made with Metropix ©2013



Stuart Rushton & Company

Stuart Rushton & Co, 35 King Street – WA16 6DW

01565 757000

enquiries@srushton.co.uk

www.srushton.co.uk



We are not authorised to make or give any representations or warranties in relation to the property either here or elsewhere. We assume no responsibility for any statement that may be made in these particulars, and they do not form part of any offer or contract and must not be relied upon as statements or representation of fact. Any areas, measurements or distances are approximate. The text, photographs and plans are for guidance only. Importantly, it should not be assumed that the property has all necessary planning, building regulations or other consents and we have not tested any services, equipment or facilities. Purchasers must satisfy themselves by inspection or otherwise.