

17 Townfield Place

Chelford

A well-presented 3-bed semi-detached house in Galloway Grange, built by David Wilson Homes. Ideal for first-time buyers or young families, with modern kitchen/diner, ensuite bedroom, parking for 2 cars, EV charging point, and peaceful garden. Close to Chelford train station and amenities.

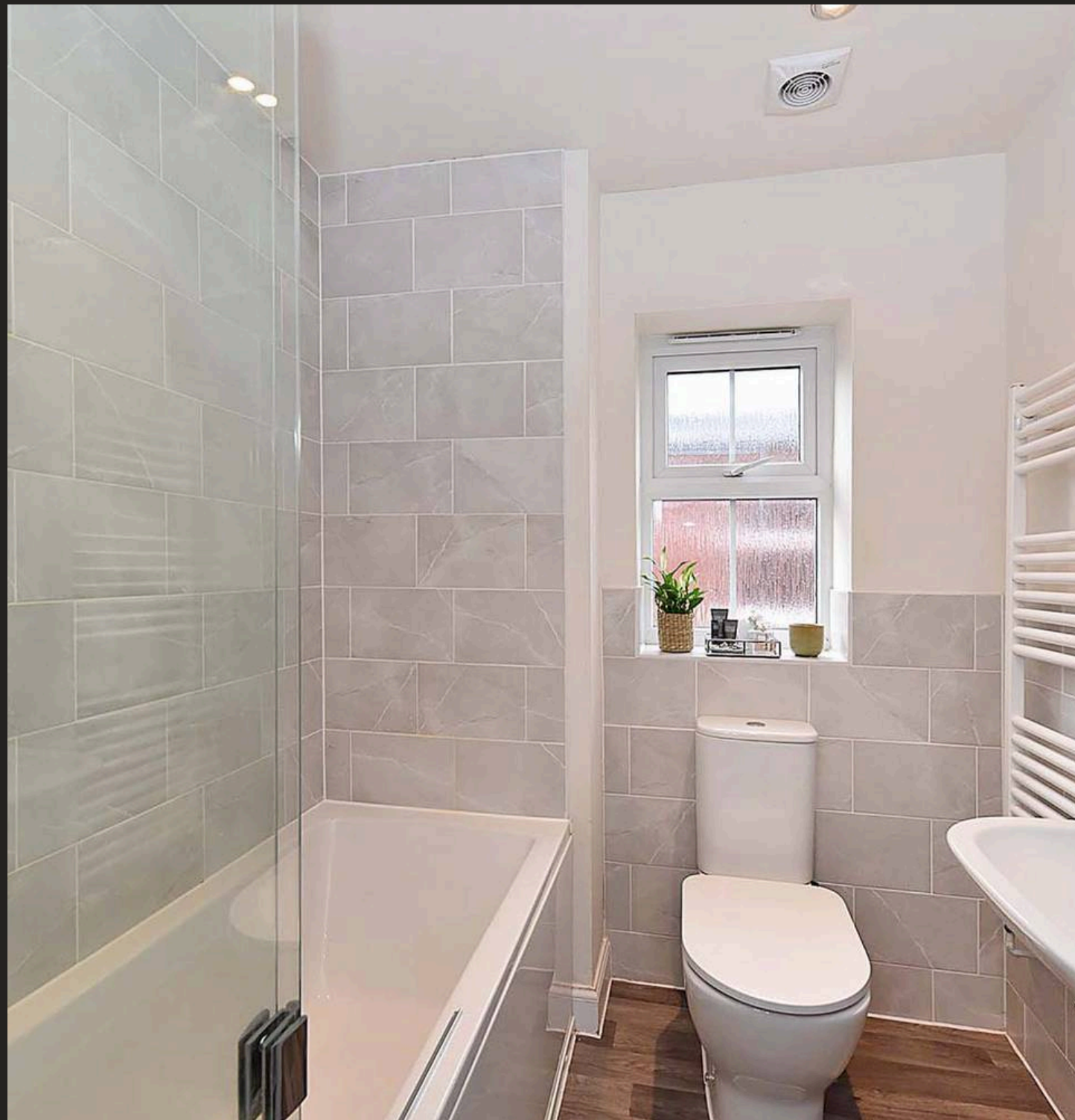
Council Tax band: D

Tenure: Freehold

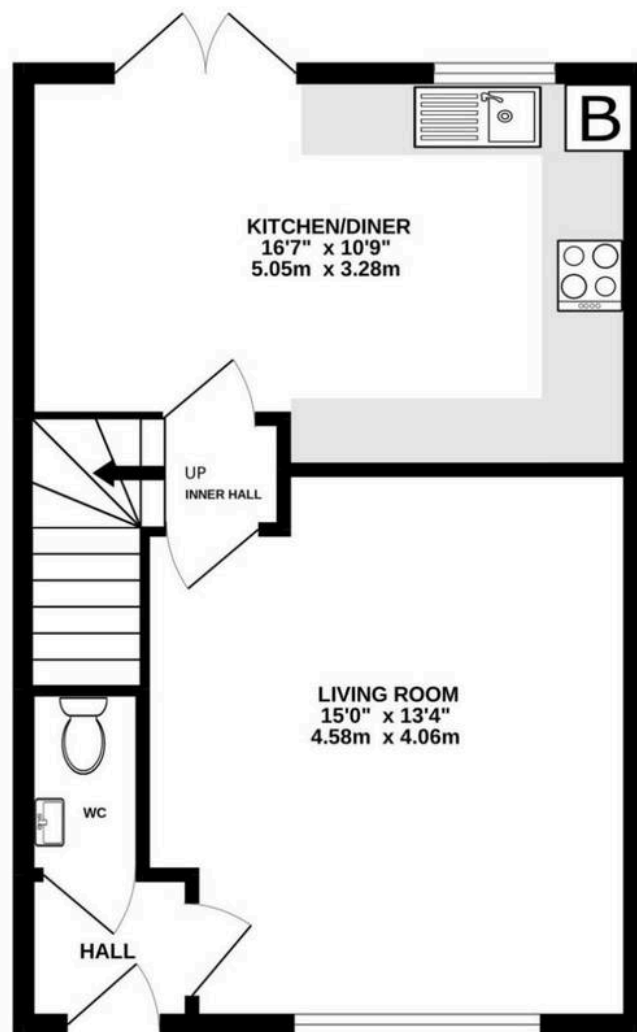
EPC Energy Efficiency Rating: B

EPC Environmental Impact Rating: B

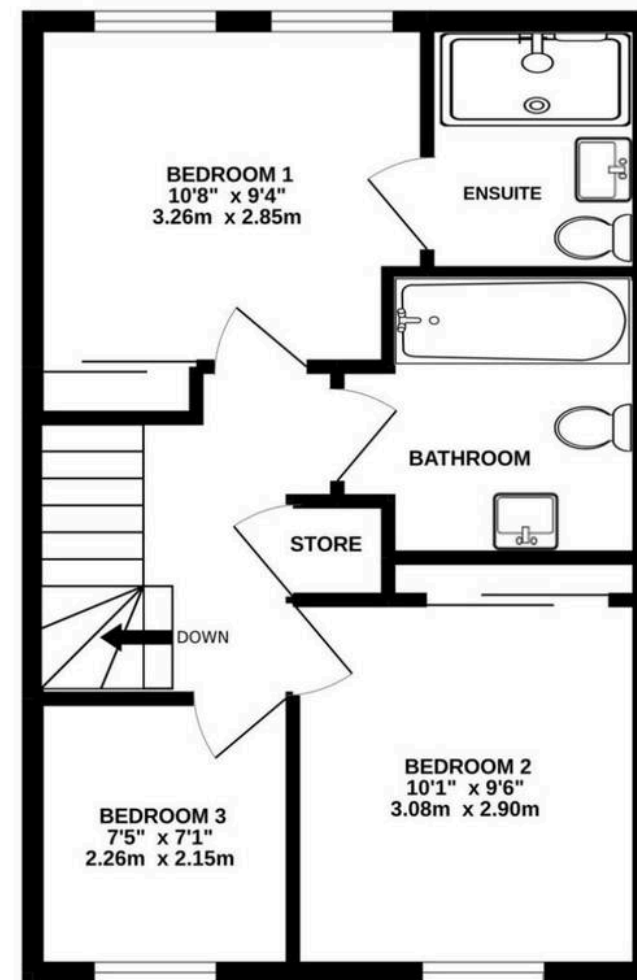
- Three bedrooms and two bathrooms
- Moments from Chelford Train Station (Manchester Picc. in 35 mins)
- Driveway parking for two
- Lovely garden with good privacy
- Only 4 years old and still under warranty



GROUND FLOOR
427 sq.ft. (39.7 sq.m.) approx.



1ST FLOOR
427 sq.ft. (39.7 sq.m.) approx.



TOTAL FLOOR AREA : 854 sq.ft. (79.4 sq.m.) approx.

Measurements are approximate. Not to scale. Illustrative purposes only
Made with Metropix ©2022



Stuart Rushton & Company

Stuart Rushton & Co, 35 King Street – WA16 6DW

01565 757000

enquiries@srushton.co.uk

www.srushton.co.uk



We are not authorised to make or give any representations or warranties in relation to the property either here or elsewhere. We assume no responsibility for any statement that may be made in these particulars, and they do not form part of any offer or contract and must not be relied upon as statements or representation of fact. Any areas, measurements or distances are approximate. The text, photographs and plans are for guidance only. Importantly, it should not be assumed that the property has all necessary planning, building regulations or other consents and we have not tested any services, equipment or facilities. Purchasers must satisfy themselves by inspection or otherwise.