



29 Freshfields

Knutsford

Luxurious 3-bed detached house in sought-after area. Modern design, high-quality finishes, spacious kitchen/diner, conservatory, landscaped garden, prime location in quiet cul-de-sac near schools and amenities.

Council Tax band: E

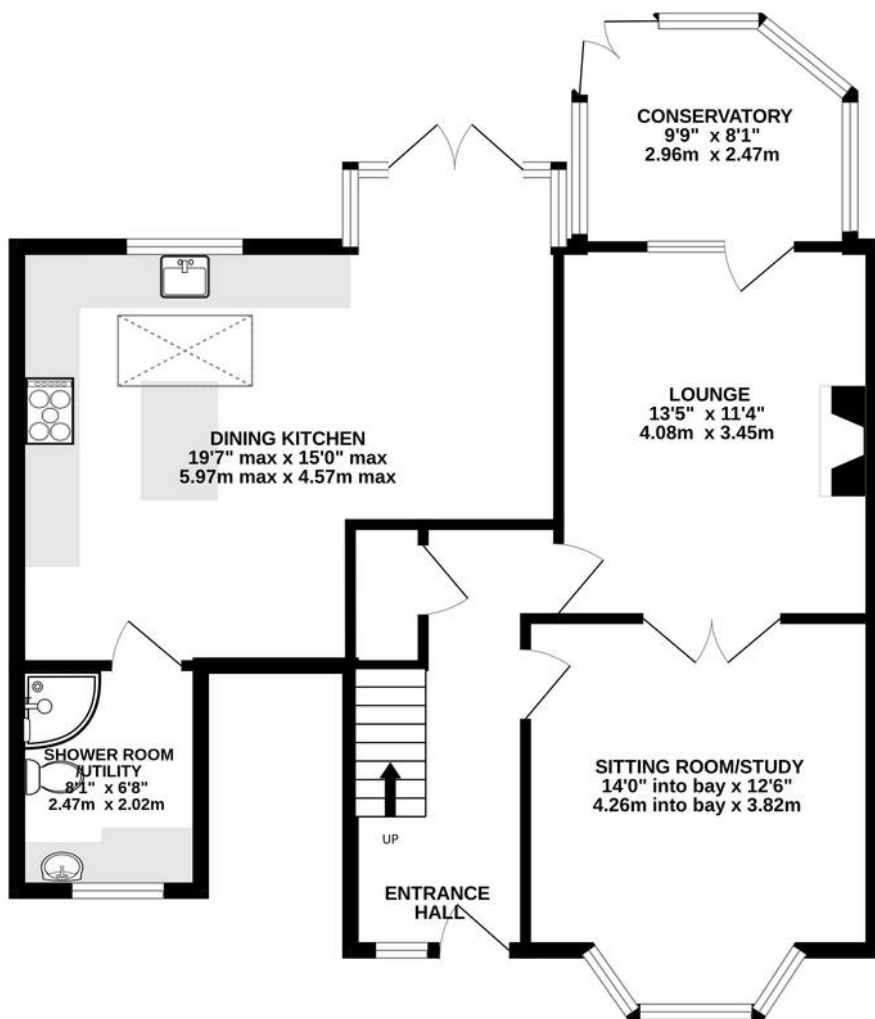
Tenure: Freehold

EPC Energy Efficiency Rating: D

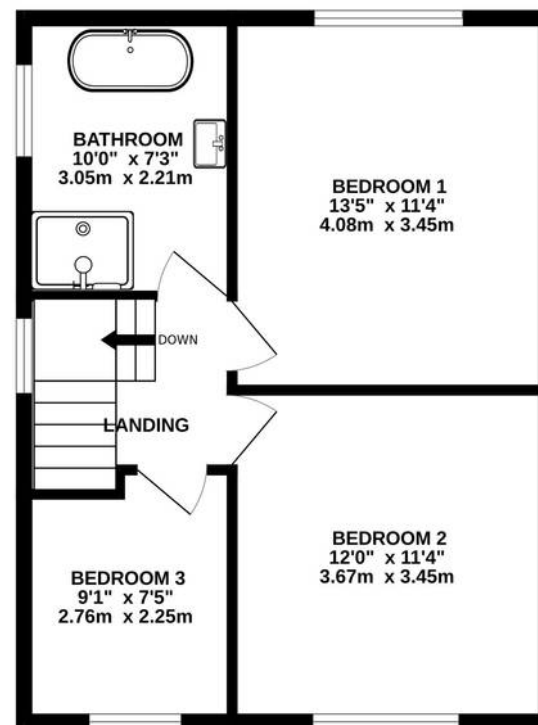
- A beautifully extended and refurbished home with a stunning high-quality and stylish finish throughout
- A large open plan kitchen/diner with NEFF fitted appliances, complimented by two reception rooms and a conservatory
- A modern downstairs shower room fitted with thermostatic shower & utility room with bespoke cabinetry for white goods
- HETAS certified log burning stove and limestone fireplace surround
- A newly refurbished upstairs bathroom with thermostatic shower and contemporary freestanding bathtub
- Good outdoor space with landscaped rear garden, excellent privacy and a south facing aspect, ideal for afternoon and evening sunshine
- A 10min stroll into Knutsford town centre and 5 min walk to Knutsford Heath



GROUND FLOOR
809 sq.ft. (75.2 sq.m.) approx.



1ST FLOOR
476 sq.ft. (44.3 sq.m.) approx.



TOTAL FLOOR AREA : 1286 sq.ft. (119.4 sq.m.) approx.

Whilst every attempt has been made to ensure the accuracy of the floorplan contained here, measurements of doors, windows, rooms and any other items are approximate and no responsibility is taken for any error, omission or mis-statement. This plan is for illustrative purposes only and should be used as such by any prospective purchaser. The services, systems and appliances shown have not been tested and no guarantee as to their operability or efficiency can be given.
Made with Metropix ©2024



Stuart Rushton & Company

Stuart Rushton & Co, 35 King Street – WA16 6DW

01565 757000

enquiries@srushton.co.uk

www.srushton.co.uk



We are not authorised to make or give any representations or warranties in relation to the property either here or elsewhere. We assume no responsibility for any statement that may be made in these particulars, and they do not form part of any offer or contract and must not be relied upon as statements or representation of fact. Any areas, measurements or distances are approximate. The text, photographs and plans are for guidance only. Importantly, it should not be assumed that the property has all necessary planning, building regulations or other consents and we have not tested any services, equipment or facilities. Purchasers must satisfy themselves by inspection or otherwise.