







# 10 Branden Drive

## Knutsford

A stunning 3-bed and 3-bathroom semi-detached house in quiet cul-de-sac near town centre. Beautiful living kitchen diner with bi-fold doors to deck. Spacious lounge with town views, integral garage, outdoor space with deck and grassed lawn for al fresco dining and relaxation.

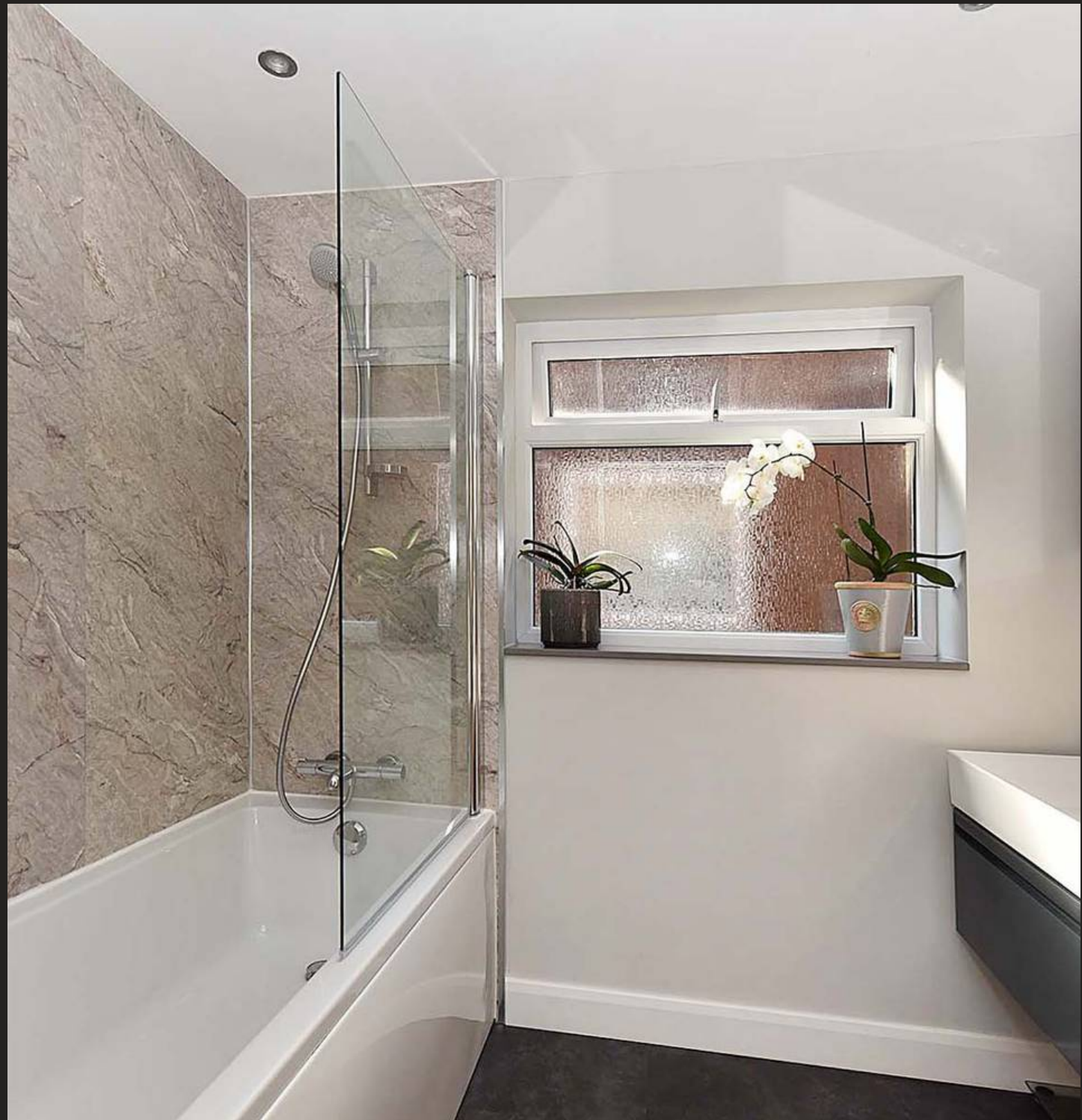
Council Tax band: D

Tenure: Freehold

EPC Energy Efficiency Rating: D

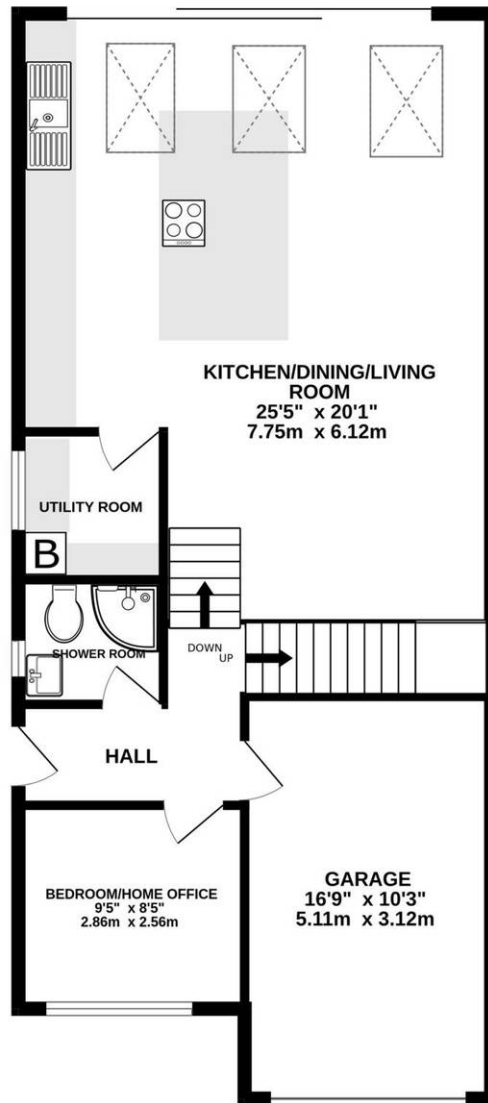
EPC Environmental Impact Rating: D

- A beautifully extended and refurbished home
- Flexible accommodation including three bedrooms and two bathrooms
- A stunning living kitchen diner with utility room and bi-folding doors onto a raised deck
- A large lounge with stunning views across the town
- Driveway parking for upto three and an integral garage
- Superb position within the town, a quiet cul-de-sac just minutes walk from the town centre

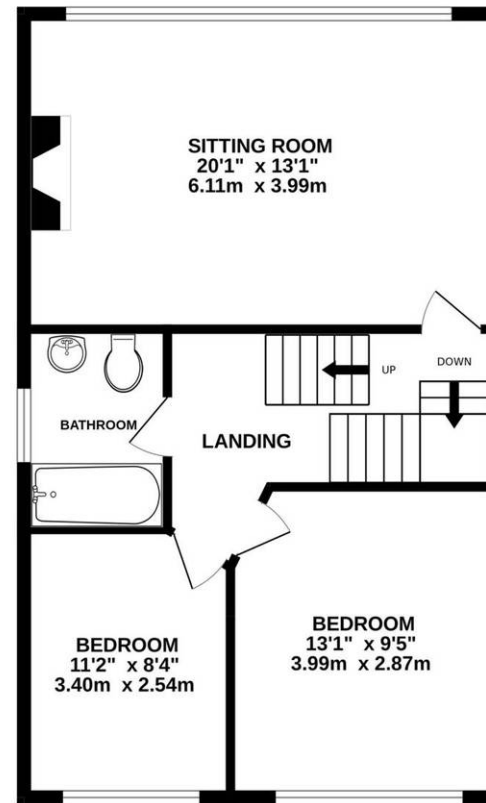




GROUND FLOOR  
853 sq.ft. (79.3 sq.m.) approx.



1ST FLOOR  
634 sq.ft. (58.9 sq.m.) approx.







## Stuart Rushton & Company

Stuart Rushton & Co, 35 King Street – WA16 6DW

01565 757000

[enquiries@srushton.co.uk](mailto:enquiries@srushton.co.uk)

[www.srushton.co.uk](http://www.srushton.co.uk)



We are not authorised to make or give any representations or warranties in relation to the property either here or elsewhere. We assume no responsibility for any statement that may be made in these particulars, and they do not form part of any offer or contract and must not be relied upon as statements or representation of fact. Any areas, measurements or distances are approximate. The text, photographs and plans are for guidance only. Importantly, it should not be assumed that the property has all necessary planning, building regulations or other consents and we have not tested any services, equipment or facilities. Purchasers must satisfy themselves by inspection or otherwise.