





10, Hiverley Grove

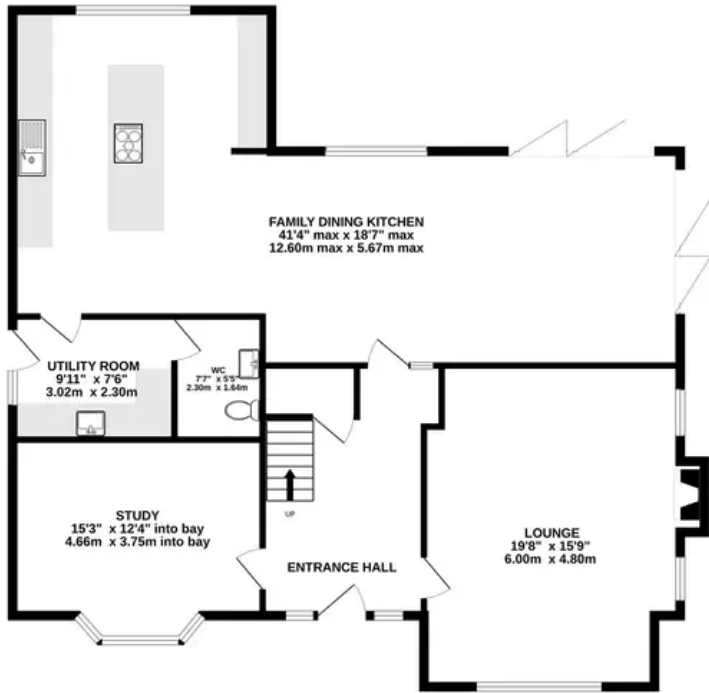
Twemlow Green, Holmes Chapel

Tenure: Freehold

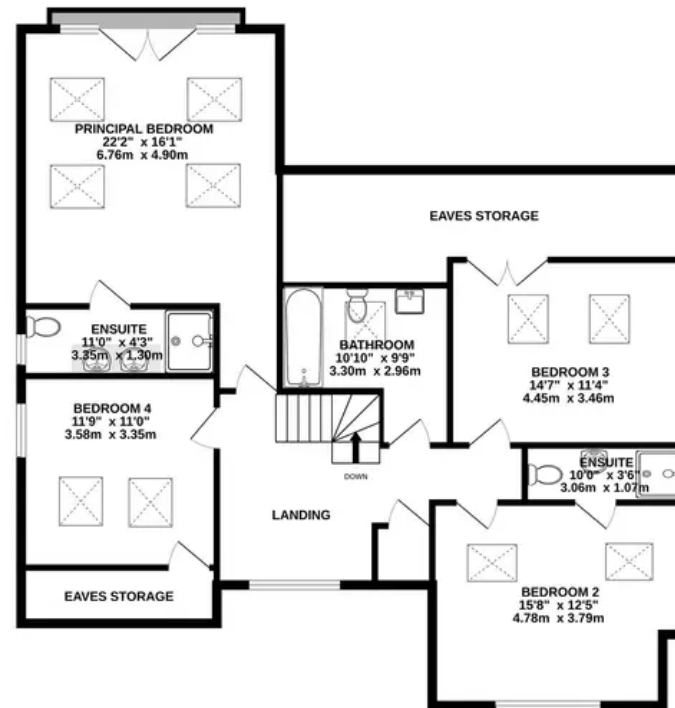
- Large new build detached in well conceived semi-rural development
- Excellent accommodation including an extensive open plan living kitchen
- Living room with parquet style oak flooring and wood burning stove
- Stylish kitchen with integrated appliances
- Superb principal bedroom with Juliette balcony and lovely views over farmland
- Guest bedroom with en-suite shower room



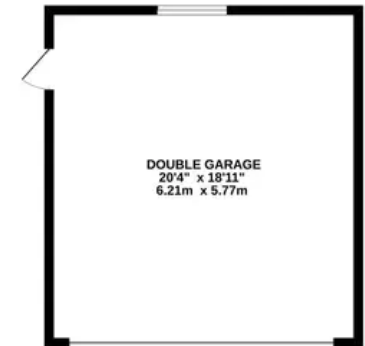
GROUND FLOOR
1371 sq.ft. (127.4 sq.m.) approx.



1ST FLOOR
1312 sq.ft. (121.9 sq.m.) approx.



386 sq.ft. (35.8 sq.m.) approx.



TOTAL FLOOR AREA : 3070 sq.ft. (285.2 sq.m.) approx.

Whilst every attempt has been made to ensure the accuracy of the floorplan contained here, measurements of doors, windows, rooms and any other items are approximate and no responsibility is taken for any error, omission or mis-statement. This plan is for illustrative purposes only and should be used as such by any prospective purchaser. The services, systems and appliances shown have not been tested and no guarantee as to their operability or efficiency can be given.

Made with Metropix ©2024



Stuart Rushton & Company

Stuart Rushton & Co, 35 King Street – WA16 6DW

01565 757000

enquiries@srushton.co.uk

www.srushton.co.uk



We are not authorised to make or give any representations or warranties in relation to the property either here or elsewhere. We assume no responsibility for any statement that may be made in these particulars, and they do not form part of any offer or contract and must not be relied upon as statements or representation of fact. Any areas, measurements or distances are approximate. The text, photographs and plans are for guidance only. Importantly, it should not be assumed that the property has all necessary planning, building regulations or other consents and we have not tested any services, equipment or facilities. Purchasers must satisfy themselves by inspection or otherwise.