







September Cottage, High Street

, Great Budworth

Charming detached cottage with annexe just behind Great Budworth High Street. 4 beds, 3 baths, gated driveway, stunning garden, versatile layout for families or rental income. Peaceful retreat in sought-after village.

Tenure: Freehold

Council Tax Band: G

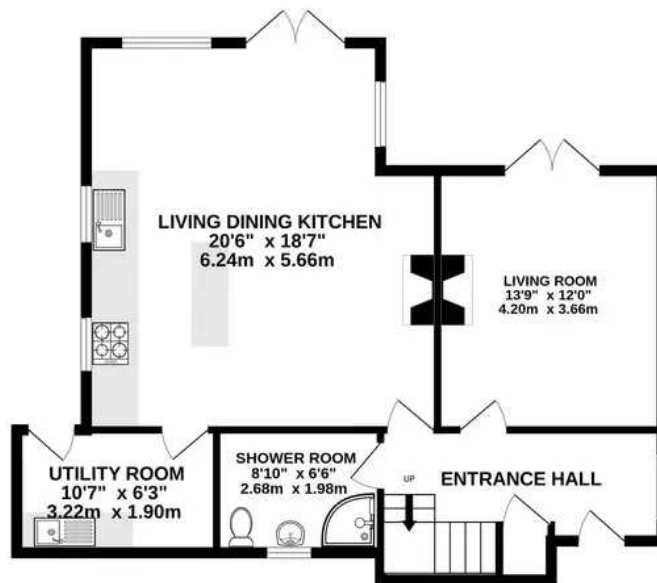
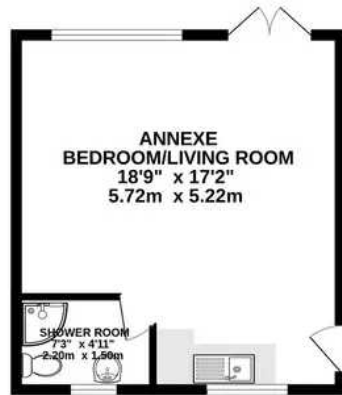
Local Authority: Cheshire West & Chester

EPC Energy Efficiency Rating: D

- A wonderful detached cottage with separate annex
- Modern open plan living/kitchen/diner
- Four bedrooms and three bathrooms in all
- Wonderful, secluded plot with a gated driveway and stunning garden
- Set just behind the beautiful Great Budworth High Street
- Flexible accommodation to suit a variety of needs and potential for passive rental income



GROUND FLOOR
1063 sq.ft. (98.7 sq.m.) approx.



1ST FLOOR
592 sq.ft. (55.0 sq.m.) approx.



TOTAL FLOOR AREA : 1655 sq.ft. (153.7 sq.m.) approx.

Whilst every attempt has been made to ensure the accuracy of the floorplan contained here, measurements of doors, windows, rooms and any other items are approximate and no responsibility is taken for any error, omission or mis-statement. This plan is for illustrative purposes only and should be used as such by any prospective purchaser. The services, systems and appliances shown have not been tested and no guarantee as to their operability or efficiency can be given.
Made with Metropix ©2024



Stuart Rushton & Company

Stuart Rushton & Co, 35 King Street – WA16 6DW

01565 757000

enquiries@srushton.co.uk

www.srushton.co.uk



**Stuart
Rushton**
& COMPANY

We are not authorised to make or give any representations or warranties in relation to the property either here or elsewhere. We assume no responsibility for any statement that may be made in these particulars, and they do not form part of any offer or contract and must not be relied upon as statements or representation of fact. Any areas, measurements or distances are approximate. The text, photographs and plans are for guidance only. Importantly, it should not be assumed that the property has all necessary planning, building regulations or other consents and we have not tested any services, equipment or facilities. Purchasers must satisfy themselves by inspection or otherwise.