





The Ponds, Main Road

Goostrey

Perfectly placed in the middle of picturesque Goostrey village, around 10 minutes south of Knutsford, this exquisite 5300 square foot, 6-bedroom detached house offers a contemporary retreat designed to perfection.

Crafted as a bespoke commission for its current owners in 2016, the property exudes sophistication and modern elegance at every turn. Boasting gated gardens and grounds spanning nearly an acre (0.83), the house boasts clever detail everywhere.

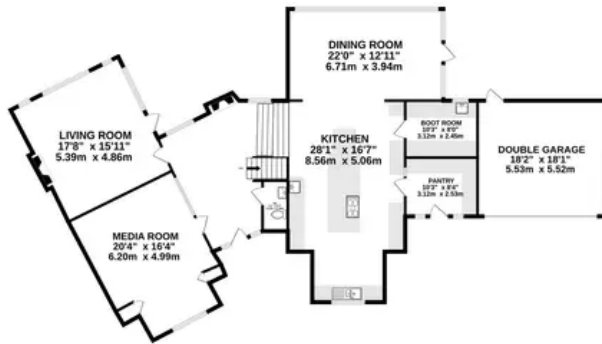
Council Tax band: G

Tenure: Freehold

- A wonderful contemporary village house
- Lovely gated gardens and ground of nearly an acre (0.83)
- Spacious and flexible internal layout for the family, in all over 5000 square feet
- Six en suite bedrooms, three reception rooms
- London Euston in two hours from the village station



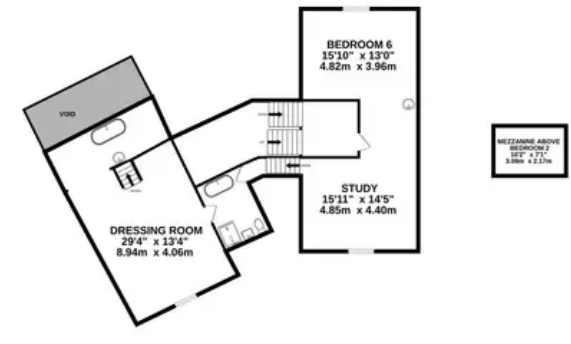
GROUND FLOOR



1ST FLOOR



2ND FLOOR



APPROXIMATE NET INTERNAL AREA 5301 SQ FT - 492.52 SQ M

Whilst every attempt has been made to ensure the accuracy of the floorplan contained here, measurements of doors, windows, rooms and any other items are approximate and no responsibility is taken for any error, omission or mis-statement. This plan is for illustrative purposes only and should be used as such by any prospective purchaser. The services, systems and appliances shown have not been tested and no guarantee as to their operability or efficiency can be given.

Made with Metropix ©2024



Stuart Rushton & Company

Stuart Rushton & Co, 35 King Street – WA16 6DW

01565 757000

enquiries@srushton.co.uk

www.srushton.co.uk



We are not authorised to make or give any representations or warranties in relation to the property either here or elsewhere. We assume no responsibility for any statement that may be made in these particulars, and they do not form part of any offer or contract and must not be relied upon as statements or representation of fact. Any areas, measurements or distances are approximate. The text, photographs and plans are for guidance only. Importantly, it should not be assumed that the property has all necessary planning, building regulations or other consents and we have not tested any services, equipment or facilities. Purchasers must satisfy themselves by inspection or otherwise.