







1 The Stables

Tabley House Tabley Lane Chester Road,
Knutsford

A modern three bedroom Grade II listed Georgian townhouse with a charming private garden, allocated parking and a garage, forming part of a wonderful rural courtyard development within the grounds of Tabley Hall, just a few minutes from Knutsford town centre.

Council Tax band: E

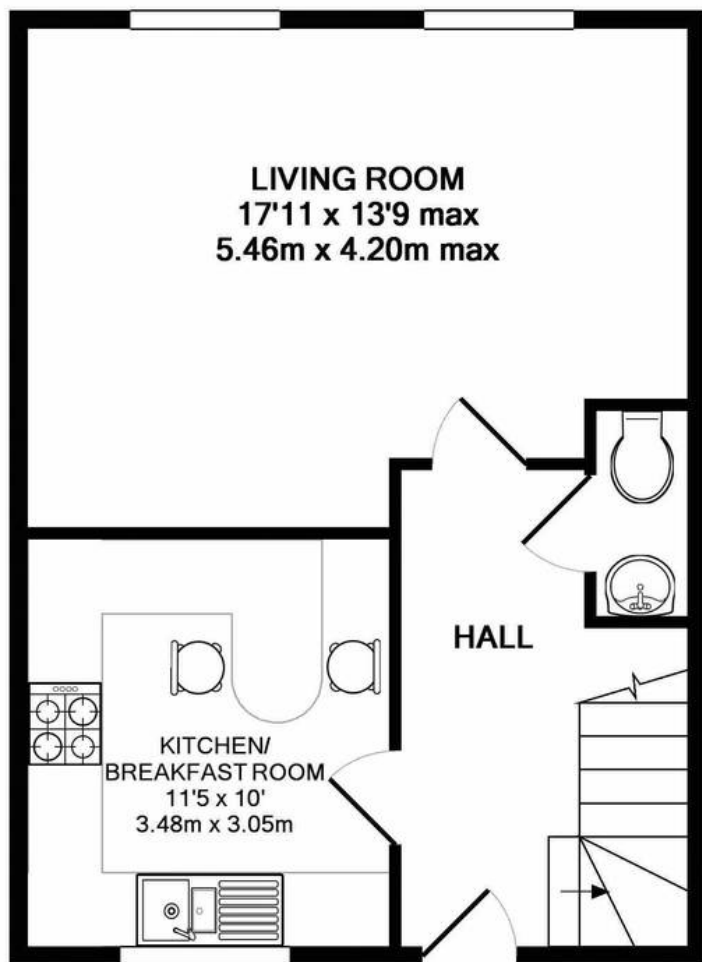
Tenure: Leasehold

EPC Energy Efficiency Rating: D

EPC Environmental Impact Rating: D

- Grade II listed modern Georgian mews house in a lovely rural setting
- Part of a stunning courtyard development in lovely parkland setting
- 25 acres of communal parkland, woodland and lakes
- Three bedrooms, two bathrooms
- Allocated parking and garage, private garden



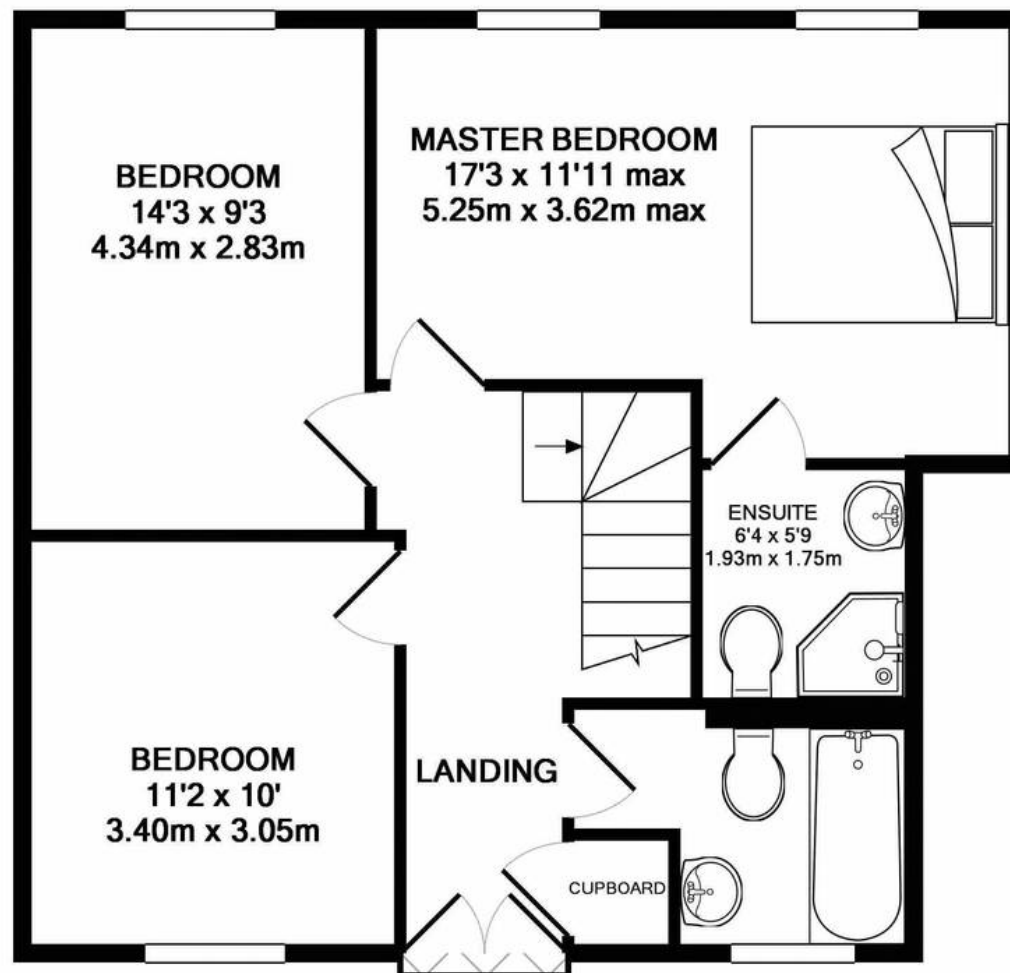


LIVING ROOM
 17'11 x 13'9 max
 5.46m x 4.20m max

**KITCHEN/
 BREAKFAST ROOM**
 11'5 x 10'
 3.48m x 3.05m

HALL

GROUND FLOOR
 APPROX. FLOOR
 AREA 448 SQ.FT.
 (41.6 SQ.M.)



BEDROOM
 14'3 x 9'3
 4.34m x 2.83m

MASTER BEDROOM
 17'3 x 11'11 max
 5.25m x 3.62m max

BEDROOM
 11'2 x 10'
 3.40m x 3.05m

ENSUITE
 6'4 x 5'9
 1.93m x 1.75m

LANDING

CUPBOARD

1ST FLOOR
 APPROX. FLOOR
 AREA 617 SQ.FT.
 (57.3 SQ.M.)

TOTAL APPROX. FLOOR AREA 1064 SQ.FT. (98.9 SQ.M.)

Whilst every attempt has been made to ensure the accuracy of the floor plan contained here, measurements of doors, windows, rooms and any other items are approximate and no responsibility is taken for any error, omission, or mis-statement. This plan is for illustrative purposes only and should be used as such by any prospective purchaser. The services, systems and appliances shown have not been tested and no guarantee as to their operability or efficiency can be given

Made with Metropix ©2018



Stuart Rushton & Company

Stuart Rushton & Co, 35 King Street – WA16 6DW

01565 757000

enquiries@srushton.co.uk

www.srushton.co.uk



We are not authorised to make or give any representations or warranties in relation to the property either here or elsewhere. We assume no responsibility for any statement that may be made in these particulars, and they do not form part of any offer or contract and must not be relied upon as statements or representation of fact. Any areas, measurements or distances are approximate. The text, photographs and plans are for guidance only. Importantly, it should not be assumed that the property has all necessary planning, building regulations or other consents and we have not tested any services, equipment or facilities. Purchasers must satisfy themselves by inspection or otherwise.