





Wentworth House Bexton Lane

Knutsford

A substantial detached family house, extended and remodelled in recent years, boasting spacious accommodation for a large family, in all nearly 4000 square feet, situated in a superb central position on this sought after road, within landscaped gardens of around a third of an acre.

Council Tax band: G

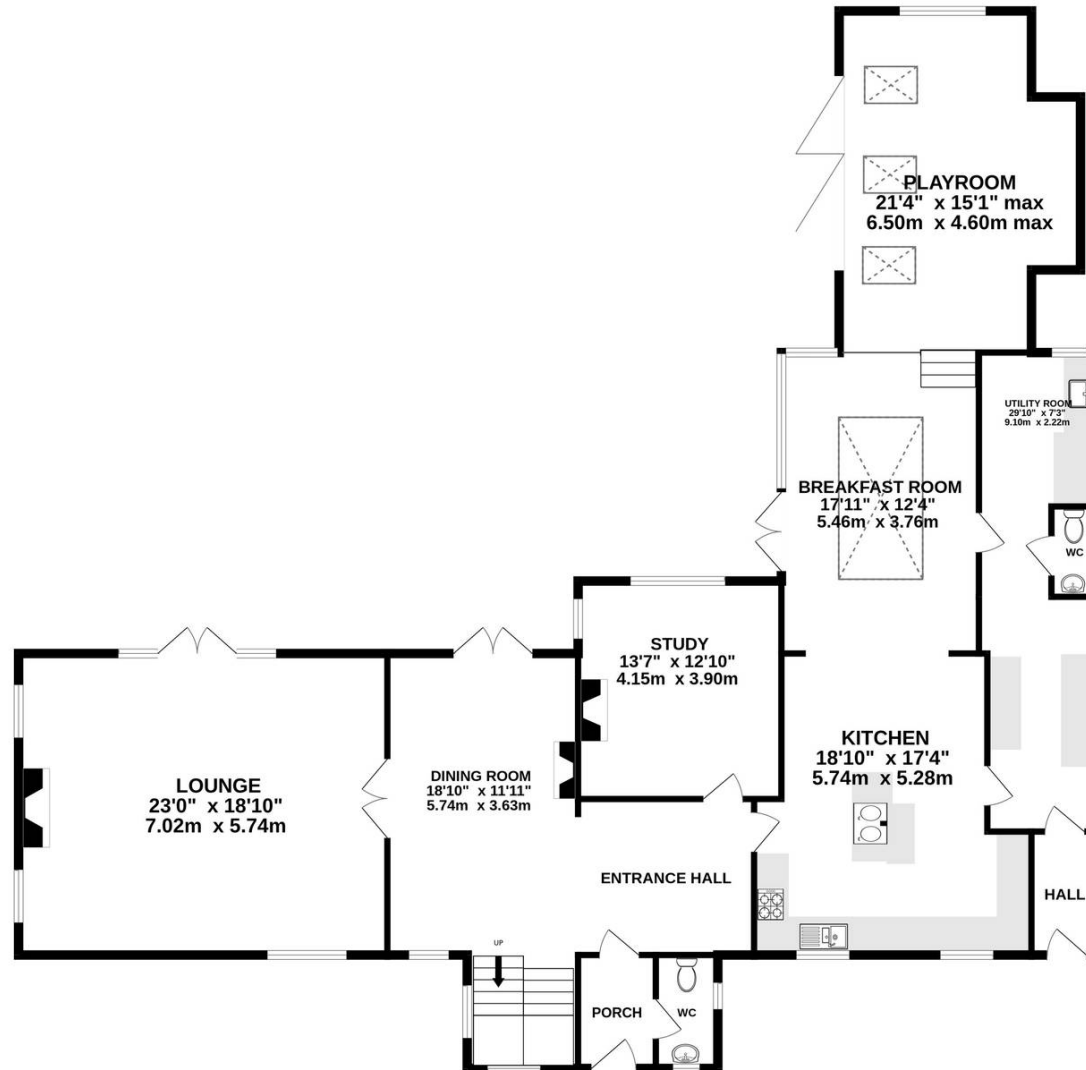
Tenure: Freehold

EPC Energy Efficiency Rating: C

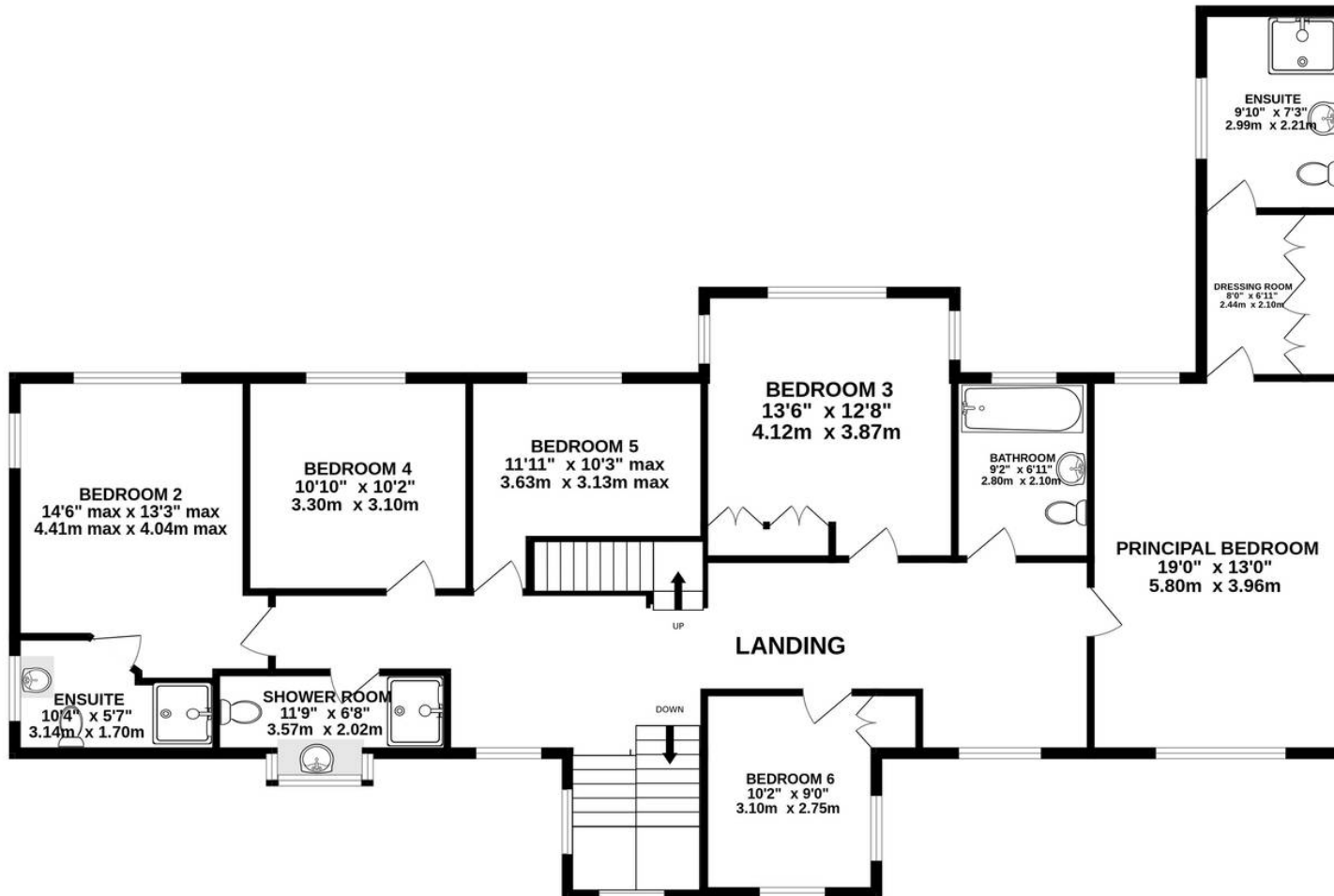
- Substantial detached family house in lovely gardens of a third of an acre
- Nearly 4000 square feet, seven bedrooms, four bathrooms and four reception rooms
- Superb location within easy reach of the town and Bexton School
- Excellent layout for family living



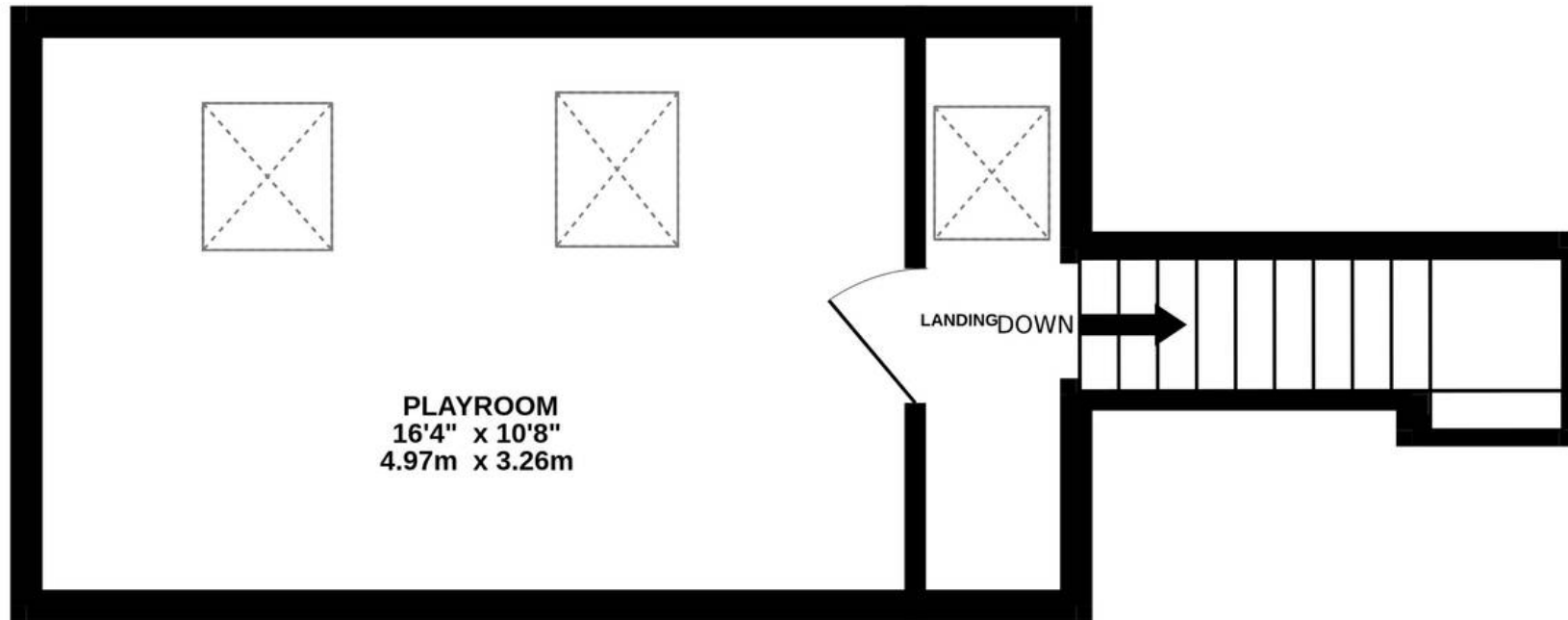
GROUND FLOOR
2080 sq.ft. (193.3 sq.m.) approx.



1ST FLOOR
1590 sq.ft. (147.7 sq.m.) approx.



2ND FLOOR
232 sq.ft. (21.5 sq.m.) approx.





Stuart Rushton & Company

Stuart Rushton & Co, 35 King Street – WA16 6DW

01565 757000

enquiries@srushton.co.uk

www.srushton.co.uk



We are not authorised to make or give any representations or warranties in relation to the property either here or elsewhere. We assume no responsibility for any statement that may be made in these particulars, and they do not form part of any offer or contract and must not be relied upon as statements or representation of fact. Any areas, measurements or distances are approximate. The text, photographs and plans are for guidance only. Importantly, it should not be assumed that the property has all necessary planning, building regulations or other consents and we have not tested any services, equipment or facilities. Purchasers must satisfy themselves by inspection or otherwise.