



# Foxcovert Cottage Foxcovert Lane

Lower Peover, Knutsford

A charming Grade II listed detached thatched cottage in the middle of this sought after village with potential for further improvement, in a delightful plot of about two thirds of an acre, adjoining open fields at the rear.

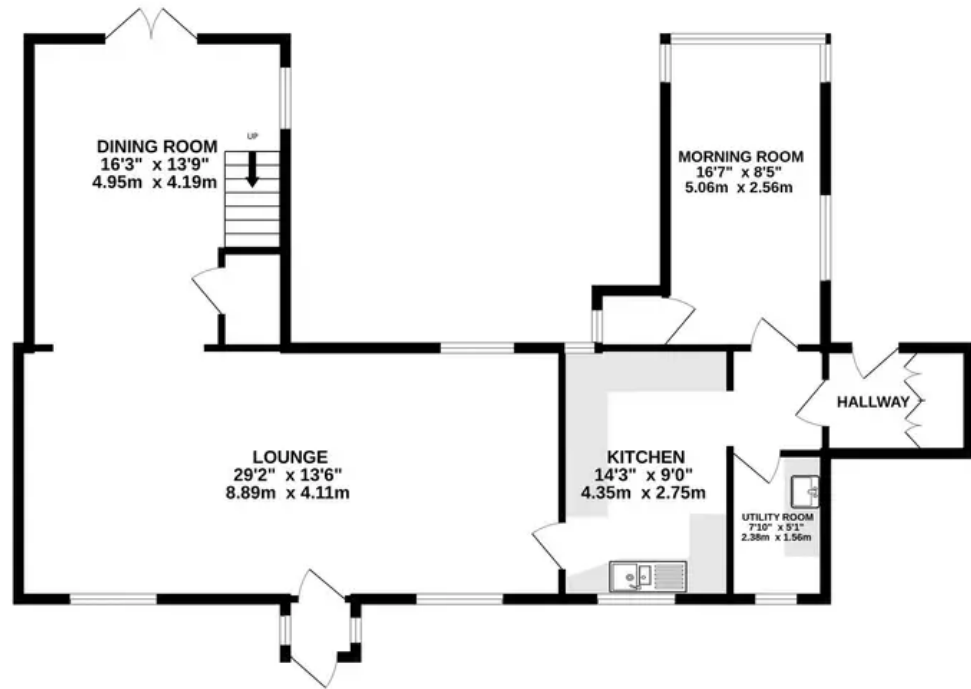
Council Tax band: G

Tenure: Freehold

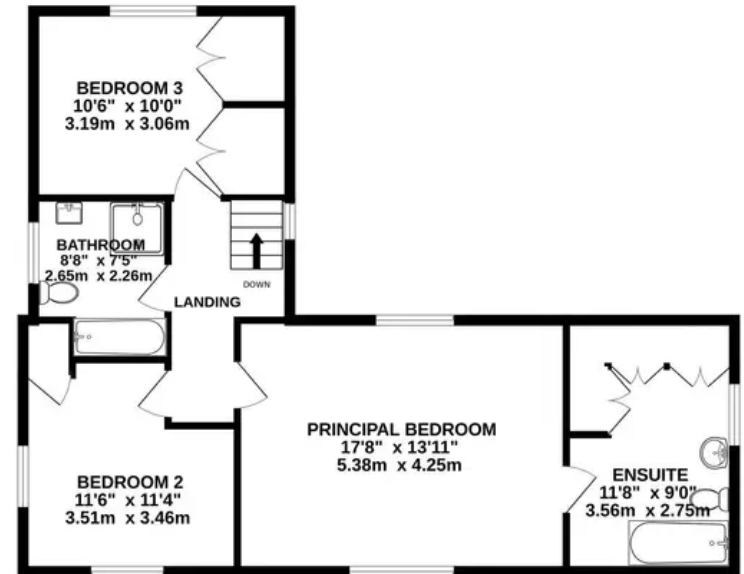
- A beautiful grade II listed detached thatched cottage
- Extensive plot including stables and a garage, about two thirds of an acre
- Idyllic and secluded setting with a long driveway
- Positioned on the edge of the village with an excellent primary school close by
- No onward chain



GROUND FLOOR  
1021 sq.ft. (94.9 sq.m.) approx.



1ST FLOOR  
743 sq.ft. (69.0 sq.m.) approx.



TOTAL FLOOR AREA : 1765 sq.ft. (163.9 sq.m.) approx.

Whilst every attempt has been made to ensure the accuracy of the floorplan contained here, measurements of doors, windows, rooms and any other items are approximate and no responsibility is taken for any error, omission or mis-statement. This plan is for illustrative purposes only and should be used as such by any prospective purchaser. The services, systems and appliances shown have not been tested and no guarantee as to their operability or efficiency can be given.

Made with Metropix ©2023





## Stuart Rushton & Company

Stuart Rushton & Co, 35 King Street – WA16 6DW

01565 757000

[enquiries@srushton.co.uk](mailto:enquiries@srushton.co.uk)

[www.srushton.co.uk](http://www.srushton.co.uk)



We are not authorised to make or give any representations or warranties in relation to the property either here or elsewhere. We assume no responsibility for any statement that may be made in these particulars, and they do not form part of any offer or contract and must not be relied upon as statements or representation of fact. Any areas, measurements or distances are approximate. The text, photographs and plans are for guidance only. Importantly, it should not be assumed that the property has all necessary planning, building regulations or other consents and we have not tested any services, equipment or facilities. Purchasers must satisfy themselves by inspection or otherwise.