

17 Chantry Avenue , Penistone, S36 6EE

UNFURNISHED: A modern and contemporary three bedroom semi detached family home in this sought after location just five minutes walk from the train station and local amenities with direct access to the trans pennine trail. The accommodation briefly comprises entrance hallway, ground floor shower room, laundry room and ground floor bedroom/family room. To the first floor are the spacious lounge and quality kitchen with all appliances. Two further second floor double bedrooms, master with ensuite and family bathroom. Available NOW.

£1,100 Per Calendar Month

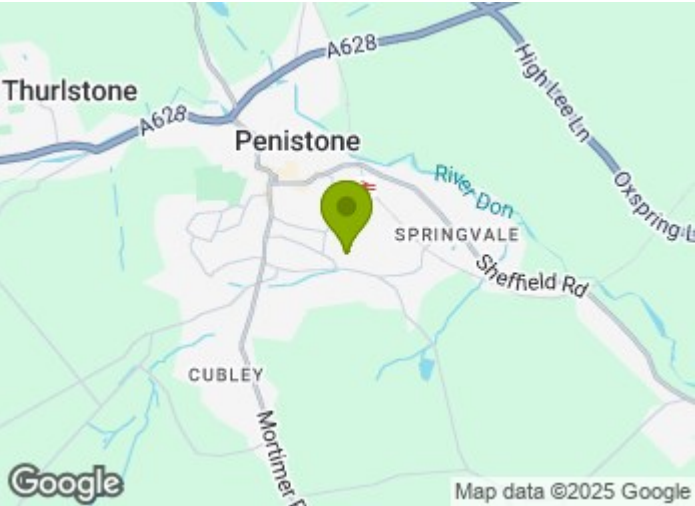
17 Chantry Avenue

, Penistone, S36 6EE

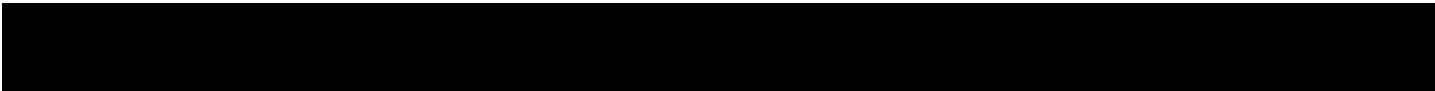


- THREE BEDROOM SEMI DETACHED MODERN TOWNHOUSE
- ACCOMMODATION OVER THREE FLOORS WITH TWO BATHROOMS AND ENSUITE
- COUNCIL TAX BAND C
- FIVE MINUTE WALK TO THE LOCAL AMENITIES AND TRAIN STATION
- GARAGE, OFF ROAD PARKING AND PRIVATE REAR GARDEN
- MODERN THROUGHOUT WITH A HIGH QUALITY FITTED KITCHEN
- AVAILABLE NOW WITH £1100 DEPOSIT/BOND

Entrance	Ensuite
Shower room 9'6" x 2'10" (2.90m x 0.86m)	5'3" x 4'11" (1.60m x 1.50m)
Laundry Room 6'5" x 5'5" (1.96m x 1.65m)	Bedroom 2 11'0" x 10'9" (3.35m x 3.28m)
Bedroom 3/family room 9'1" x 7'9" (2.77m x 2.36m)	Family Bathroom 6'11" x 5'7" (2.11m x 1.70m)
First Floor Landing	Garden
Lounge 14'8" x 13'6" (4.47m x 4.11m)	Garage and off road parking
Kitchen 11'9" x 7'9" (3.58m x 2.36m)	
Second Floor Landing	
Bedroom 1 14'7" x 8'10" (4.45m x 2.69m)	



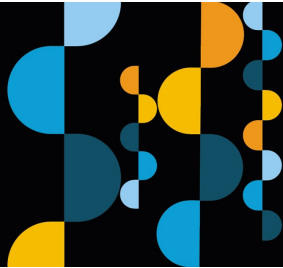
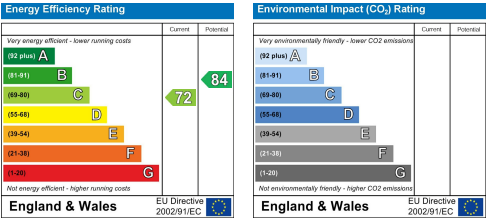
Directions





Floor Plan

These particulars, whilst believed to be accurate are set out as a general outline only for guidance and do not constitute any part of an offer or contract. Intending purchasers should not rely on them as statements of representation of fact, but must satisfy themselves by inspection or otherwise as to their accuracy. No person in this firms employment has the authority to make or give any representation or warranty in respect of the property.



Estate
agency
done
properly

Snow
Gate™

Holmfirth 26 Victoria Street, West Yorkshire HD9 7DE
All Enquiries: 01484 680800
Mirfield 108 Huddersfield Road, West Yorkshire WF14 8AF
All Enquiries: 01924 497801
snowgate.co.uk