

127 Meltham Road

Lockwood, Huddersfield, HD4 7BG

An unfurnished three bedroom semi detached family home with off road parking and both front and rear gardens. It has neutral carpets throughout and has just been re-decorated. Briefly comprises lounge, dining kitchen and lower ground floor utility room. To the first floor are three bedrooms (two double and one single) and a family bathroom with a shower over the bath. Gas central heating and modern double glazing. AVAILABLE NOW.

£850 Per Calendar Month

127 Meltham Road

Lockwood, Huddersfield, HD4 7BG



- THREE BEDROOM SEMI DETACHED FAMILY HOME
- LOVELY WOODLAND VIEWS TO THE REAR
- BOND/DEPOSIT £850
- FRONT AND REAR GARDEN AND OFF ROAD PARKING
- GAS CENTRAL HEATING AND DOUBLE GLAZING
- COUNCIL TAX BAND B
- LOWER GROUND UTILITY ROOM
- AVAILABLE NOW

Entrance

Lounge

13'11" x 13'0" (4.24m x 3.96m)

Dining Kitchen

14'7" x 9'5" (4.45m x 2.87m)

First Floor Landing

Master Bedroom

11'4" x 9'8" (3.45m x 2.95m)

Bedroom 2

9'10" x 9'5" (3.00m x 2.87m)

Bedroom 3

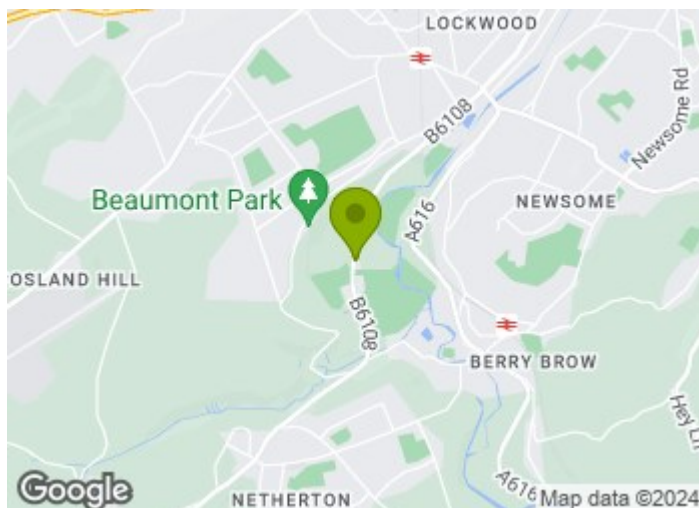
6'5" x 6'1" (1.96m x 1.85m)

Family Bathroom

5'11" x 5'5" (1.80m x 1.65m)

Utility Room

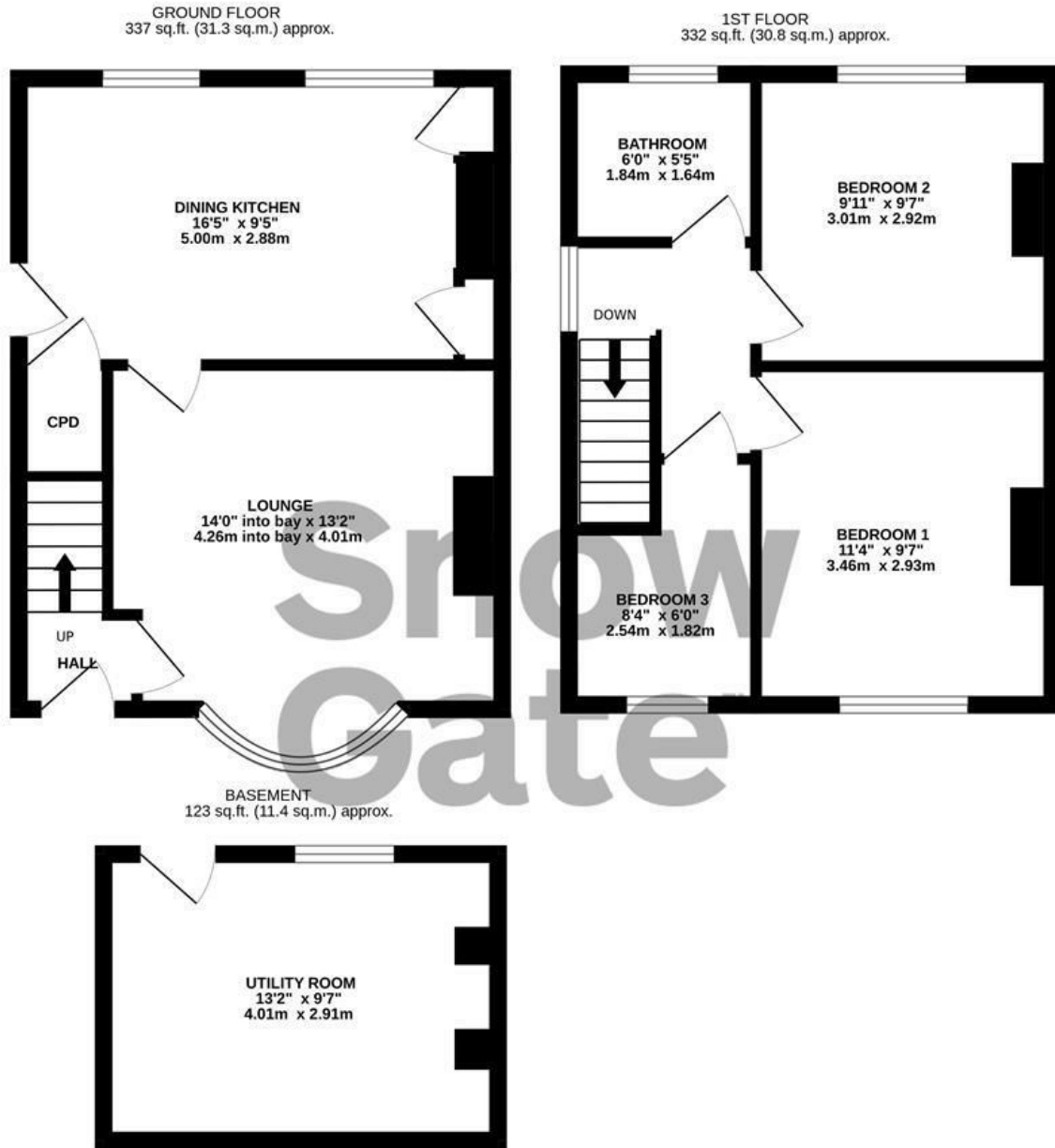
Gardens



Directions



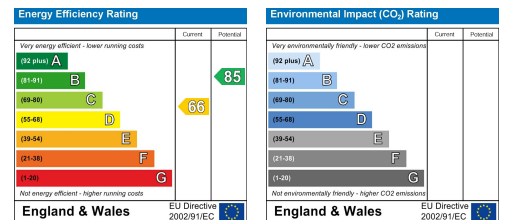
Floor Plan



TOTAL FLOOR AREA : 791 sq.ft. (73.5 sq.m.) approx.

Whilst every attempt has been made to ensure the accuracy of the floorplan contained here, measurements of doors, windows, rooms and any other items are approximate and no responsibility is taken for any error, omission or mis-statement. This plan is for illustrative purposes only and should be used as such by any prospective purchaser. The services, systems and appliances shown have not been tested and no guarantee as to their operability or efficiency can be given.
Made with Metropix ©2024

These particulars, whilst believed to be accurate are set out as a general outline only for guidance and do not constitute any part of an offer or contract. Intending purchasers should not rely on them as statements of representation of fact, but must satisfy themselves by inspection or otherwise as to their accuracy. No person in this firm's employment has the authority to make or give any representation or warranty in respect of the property.



Estate agency done properly

Snow Gate™

Holmfirth 26 Victoria Street, West Yorkshire HD9 7DE
All Enquiries: 01484 680800

Mirfield 108 Huddersfield Road, West Yorkshire WF14 8AF
All Enquiries: 01924 497801

snowgate.co.uk