

# THE HOME AGENCY

*'Passion for property.'*



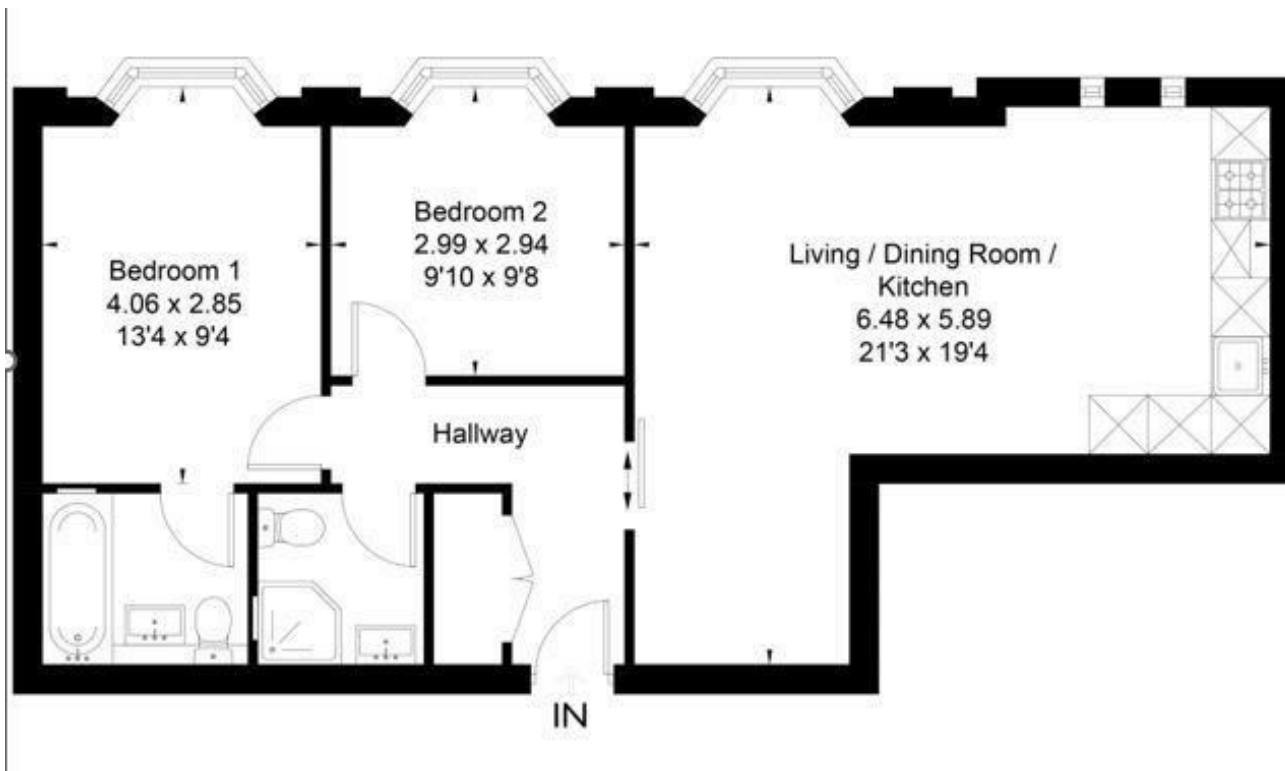
## Flat 12 Aquitaine House, 2-5 St. Clement Street, Winchester,

£1,425 PCM

- First Floor Apartment
- Two Double Bedrooms
- Double Glazing
- No parking
- Electric Heating
- City Centre Location
- En-suite Bathroom
- White Goods
- Unfurnished
- No Pets

11 London Road, Southampton, Hampshire, SO15 2AE  
02380 632632

[enquiries@thehomeagency.net](mailto:enquiries@thehomeagency.net)  
<https://thehomeagency.net>



### Directions

### Viewings

Viewings by arrangement only. Call 02380 632632 to make an appointment.

### Council Tax Band

C

### EPC Rating:

C

Energy Efficiency Rating		
	Current	Potential
<i>Very energy efficient - lower running costs</i>		
(92 plus) <b>A</b>		
(81-91) <b>B</b>		
(69-80) <b>C</b>	71	71
(55-68) <b>D</b>		
(39-54) <b>E</b>		
(21-38) <b>F</b>		
(1-20) <b>G</b>		
<i>Not energy efficient - higher running costs</i>		
<b>England &amp; Wales</b>	EU Directive 2002/91/EC	