

# THE HOME AGENCY

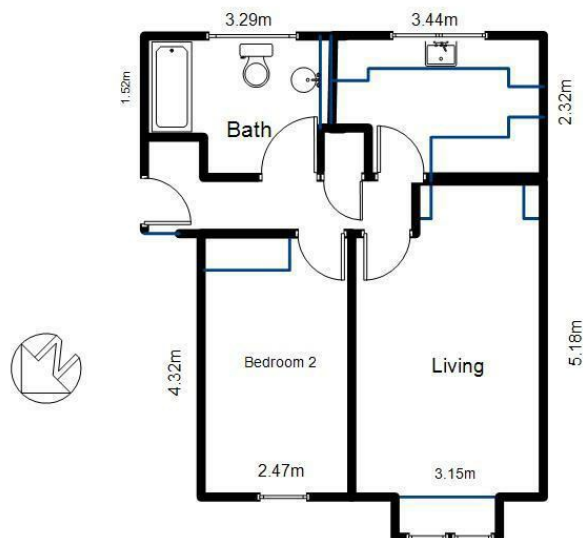
*'Passion for property'*



## 6 Pilgrim Court 206 Millbrook Road East, Freemantle, Southampton, £825 PCM

- Purpose Built Top Floor Flat
- Economy 7 Heating
- Double Glazing
- Double Bedroom
- Garage
- Modern Bathroom
- White Goods
- Separate Lounge
- No Pets

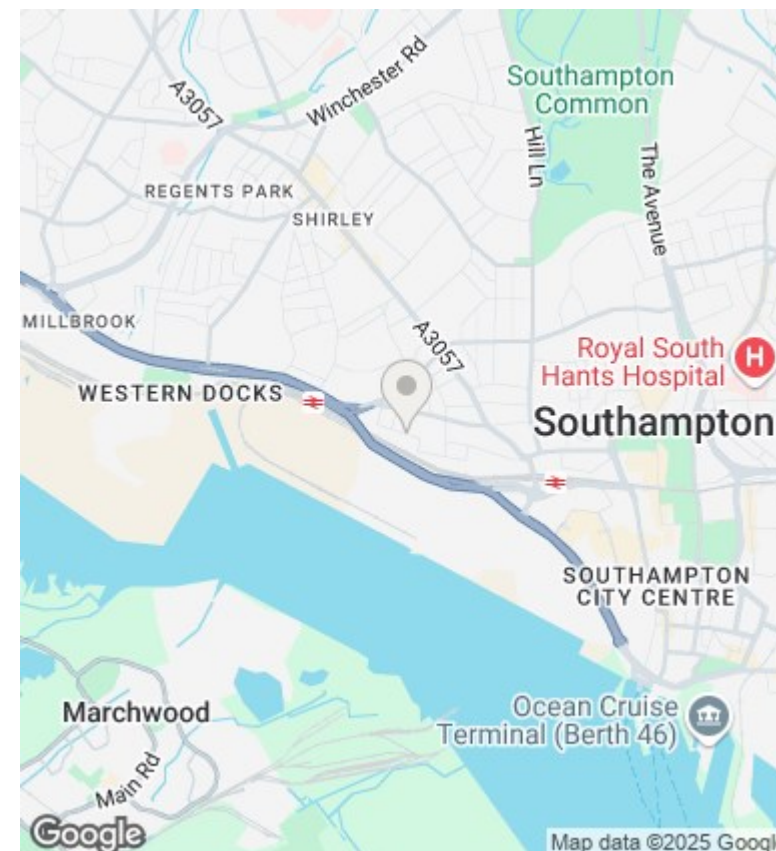
## 6 Pilgrim Court SO15 1JS



### Top Floor Flat

48.56 msq

ALL MEASUREMENTS ARE APPROXIMATE



## Directions

## Viewings

Viewings by arrangement only. Call 02380 632632 to make an appointment.

## Council Tax Band

C

## EPC Rating:

C

Energy Efficiency Rating		
	Current	Potential
Very energy efficient - lower running costs		
(92 plus) <b>A</b>		
(81-91) <b>B</b>		
(69-80) <b>C</b>	70	76
(55-68) <b>D</b>		
(39-54) <b>E</b>		
(21-38) <b>F</b>		
(1-20) <b>G</b>		
Not energy efficient - higher running costs		
England & Wales		EU Directive 2002/91/EC