

THE HOME AGENCY

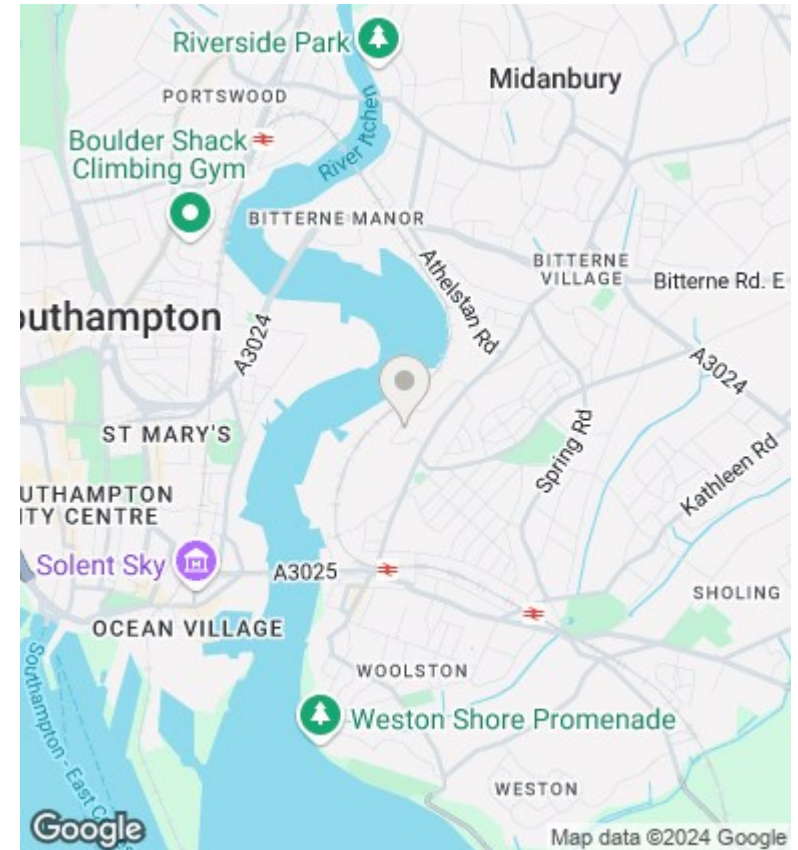
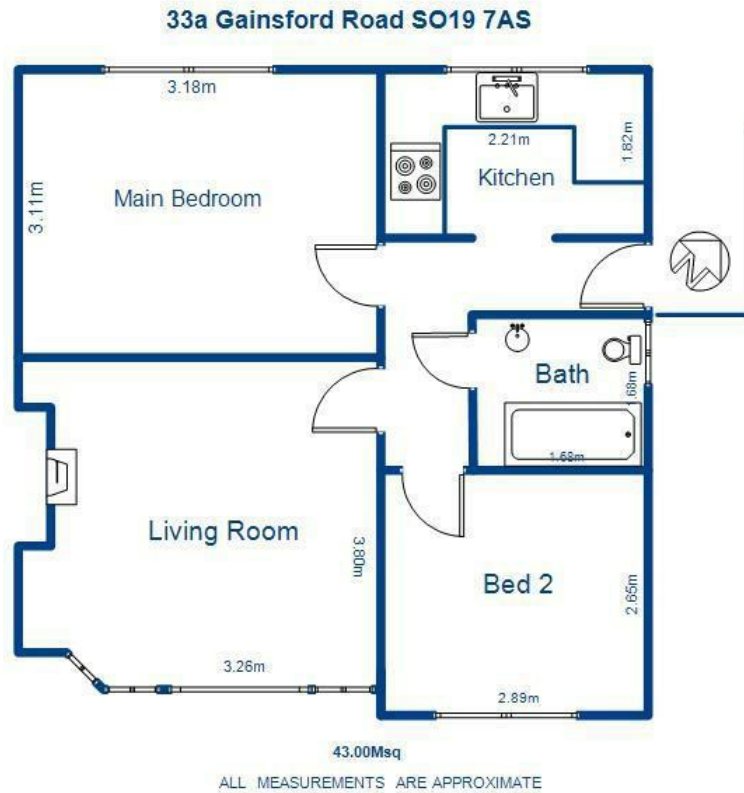
'Passion for property.'



33a Gainsford Road, Bitterne, Southampton, SO19 7AS

Asking Price £149,950

- Two Bedroom
- Double Glazing
- Viewing recommended
- Purpose Built
- Allocated parking
- Gas Central Heating
- In need of modernisation



Directions

Viewings

Viewings by arrangement only. Call 02380 632632 to make an appointment.

Council Tax Band

C

EPC Rating:

C

Energy Efficiency Rating		Current	Potential
<i>Very energy efficient - lower running costs</i>			
(92 plus) A			
(81-91) B			
(69-80) C		72	74
(55-68) D			
(39-54) E			
(21-38) F			
(1-20) G			
<i>Not energy efficient - higher running costs</i>			
England & Wales		EU Directive 2002/91/EC	