

# THE HOME AGENCY

*'Passion for property.'*

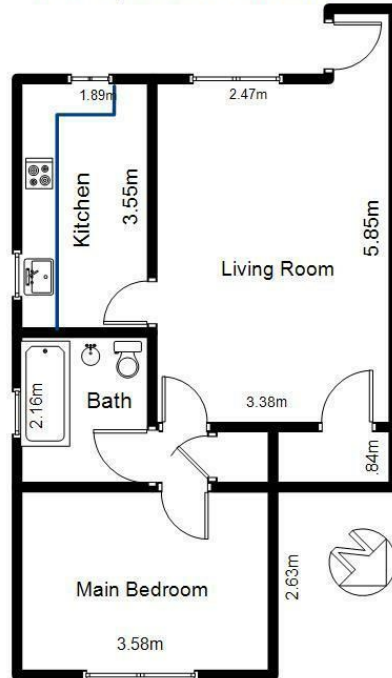


## 12 Creedy Gardens, West End, Southampton, SO18 3LW

Asking Price £154,950

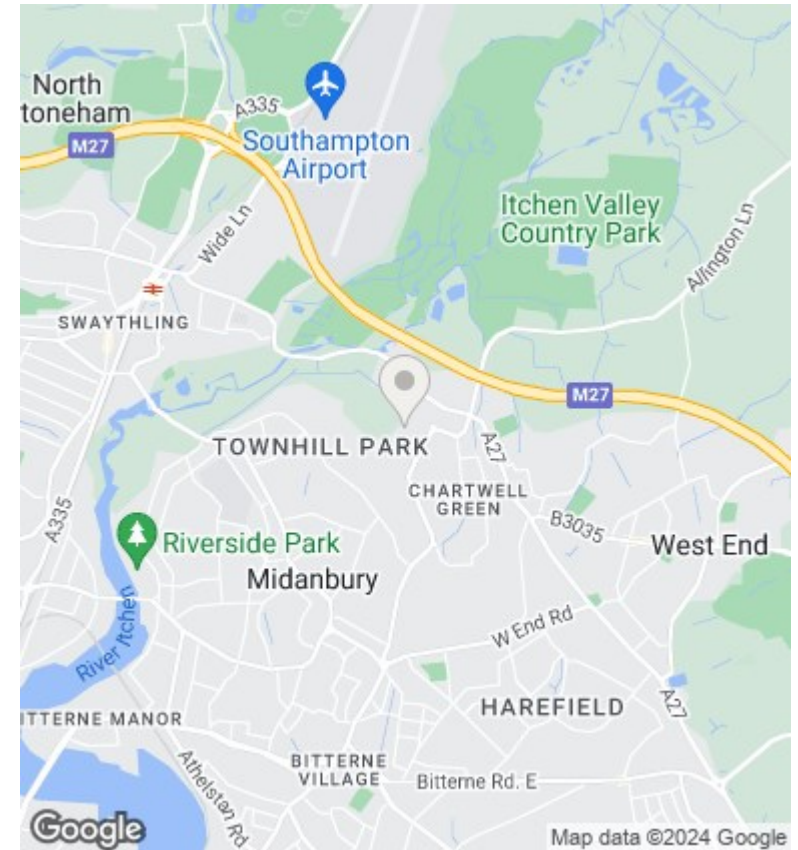
- One Bedroom
- Ground floor
- No forward chain
- Modern Kitchen
- Purpose Built
- Allocated parking
- Currently rented
- Economy seven heating
- Private garden
- Viewing recommended

12 Creedy Gardens SO18 3LW



ALL MEASUREMENTS ARE APPROXIMATE

Ground Floor Maisonette  
40.40 MSQ



Directions

Viewings

Viewings by arrangement only. Call 02380 632632 to make an appointment.

Council Tax Band

C

EPC Rating:

C

| Energy Efficiency Rating                           |                         |           |
|--|-------------------------|-----------|
|  | Current                 | Potential |
| <i>Very energy efficient - lower running costs</i> |                         |           |
| (92 plus) <b>A</b>                                 |                         |           |
| (81-91) <b>B</b>                                   |                         |           |
| (69-80) <b>C</b>                                   | 71                      | 75        |
| (55-68) <b>D</b>                                   |                         |           |
| (39-54) <b>E</b>                                   |                         |           |
| (21-38) <b>F</b>                                   |                         |           |
| (1-20) <b>G</b>                                    |                         |           |
| <i>Not energy efficient - higher running costs</i> |                         |           |
| <b>England &amp; Wales</b>                         | EU Directive 2002/91/EC |           |