



Kensington Way, Borehamwood, WD6 1LH

£289,950



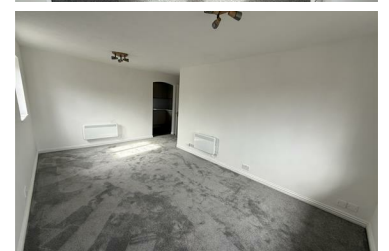
Welcome to this charming flat located on Kensington Way in Borehamwood. This delightful property offers a comfortable living space, perfect for individuals or couples seeking a modern home in a vibrant area. Spanning 614 square feet, the flat features two well-proportioned bedrooms, providing ample space for relaxation and rest.

As you enter, you will be greeted by a bright and inviting reception room, ideal for entertaining guests or enjoying quiet evenings at home. The newly decorated interiors create a fresh and contemporary atmosphere, making it easy for you to add your personal touch.

One of the standout features of this property is the brand new kitchen, which has been thoughtfully designed to meet the needs of modern living. Whether you are a culinary enthusiast or simply enjoy preparing meals, this kitchen will surely inspire your culinary creativity.

The flat also includes a well-appointed bathroom, ensuring convenience and comfort for you and your guests. With its prime location in Borehamwood, you will benefit from a variety of local amenities, including shops, restaurants, and excellent transport links, making it easy to explore the surrounding areas.

This property, built in 2000, combines the charm of a well-established community with the benefits of modern living. If you are looking for a stylish and comfortable flat in a desirable location, this property on Kensington Way is not to be missed. We invite you to arrange a viewing and experience all that this lovely home has to offer.



- Two Bedroom Apartment
- Newly Refurbished
- Allocated Parking
- Second Floor
- Brand New Kitchen
- Chain Free

138 Shenley Road, Borehamwood, Hertfordshire WD6 1EF

Tel: 020 8953 1818 Fax: 020 8953 0808

Email: info@carrington-borehamwood.co.uk Website: www.carrington-borehamwood.co.uk