



Aycliffe Road, Borehamwood, WD6 4JW

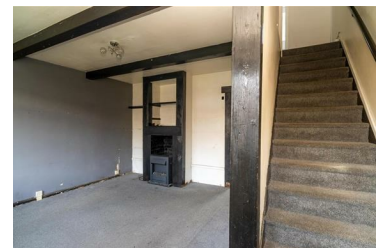
£395,000



Nestled in the charming Aycliffe Road of Borehamwood, this delightful three bedroom home, although requiring a degree of modernisation, boasts a warm and welcoming ambiance. With one reception room, three cosy bedrooms, and a family bathroom, this home offers the perfect blend of comfort and functionality. Located in a sought-after area, this property provides a peaceful retreat from the hustle and bustle of everyday life. The spacious reception room is ideal for entertaining guests or simply unwinding after a long day. The three bedrooms offer ample space for relaxation and privacy, ensuring that everyone in the household has their own sanctuary to retreat to.

Situated in a convenient location, this home is within easy reach of local amenities, schools, and transport links, making it a practical choice for families or professionals alike. Whether you're looking to settle down or invest in a promising property, this residence presents a wonderful opportunity to create a place to call home.

- Three Bedrooms
- Kitchen/Diner
- Modernisation Required
- Off Street Parking Potential
- Reception Room
- Family Bathroom
- Large Rear garden



138 Shenley Road, Borehamwood, Hertfordshire WD6 1EF

Tel: 020 8953 1818 Fax: 020 8953 0808

Email: info@carrington-borehamwood.co.uk Website: www.carrington-borehamwood.co.uk