



Felton Close

Borehamwood, WD6 4LF

£235,000 Leasehold

A delightful and spacious one bedroom first floor garden maisonette. This lovely home has been modernised to an extremely nice standard with a bright fitted kitchen and a luxurious bathroom suite. The lounge and bedroom are spacious and the maisonette also comes with a smart and private rear garden with uninterrupted views of open countryside. A very smart masonette on the outskirts of the Northside of Borehamwood

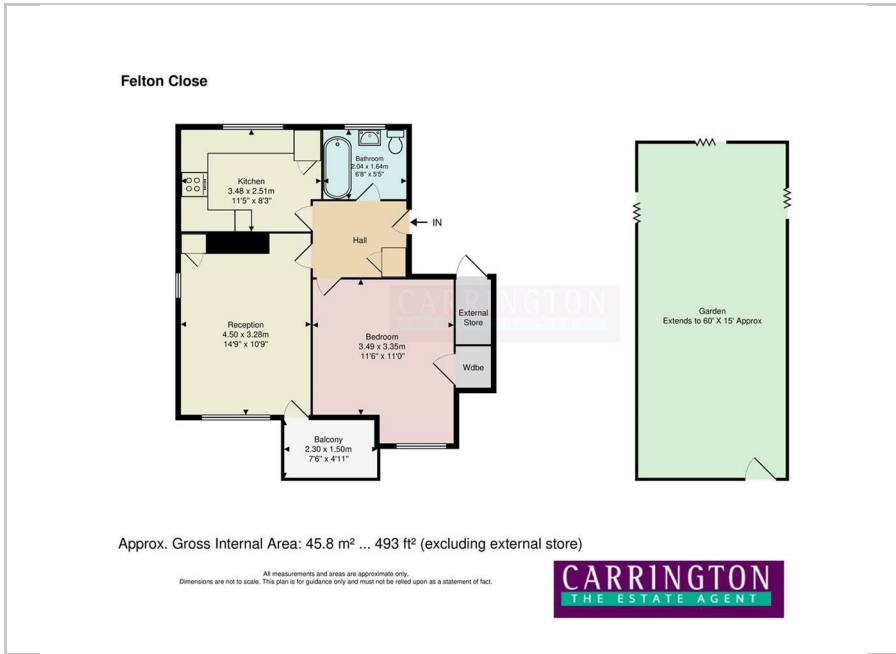
- One Bedroom
- First Floor
- Private Garden
- Spacious Rooms
- Smart Fitted Kitchen
- Luxury Bathroom

Viewing

Please contact our Carrington Estate Agents Office on 02089531818 if you wish to arrange a viewing appointment for this property or require further information.



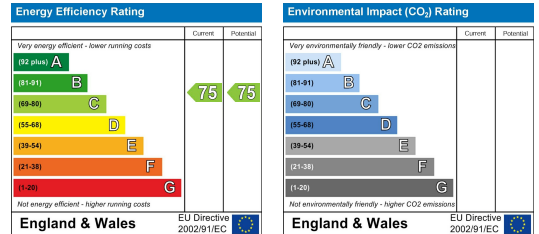
Floor Plan



Area Map



Energy Efficiency Graph



These particulars, whilst believed to be accurate are set out as a general outline only for guidance and do not constitute any part of an offer or contract. Intending purchasers should not rely on them as statements of representation of fact, but must satisfy themselves by inspection or otherwise as to their accuracy. No person in this firm's employment has the authority to make or give any representation or warranty in respect of the property.

138 Shenley Road, Borehamwood, Hertfordshire WD6 1EF

Tel: 020 8953 1818 Fax: 020 8953 0808

Email: info@carrington-borehamwood.co.uk Website: www.carrington-borehamwood.co.uk



COMPANY DIRECTOR: E. A. HUSSAIN
REGISTERED ADDRESS: 1 WARNER HOUSE, HARROVIAN BUSINESS VILLAGE,
BESSBOROUGH ROAD, HARROW, MIDD., HA1 3EX.
COMPANY REGISTRATION No: 09830132