

Buy your next home with Next Home

Leading Perthshire Estate Agency

2F South Inch Court, Perth, PH2 8BG

Offers Over £150,000


NEXTHOME
ESTATE & LETTING AGENTS

Buying with Next Home

2F South Inch Court, Perth, PH2 8BG

Many thanks for your interest with 2F South Inch Court, Perth, PH2 8BG.

Next Home Estate Agents dedicate themselves to be available when you are, offering an unbeatable service 7 days a week until 9pm.

We have the largest sales team in Perthshire, operating from our 5 offices throughout Perthshire and delivering more sales than any other estate agent.

Not only are we Perthshire's Number 1 choice but we are also local. One of the reasons we know the local markets so well is because we live here. So let us guide you through the selling and buying process.

If you're a first time buyer we have incentives to help get you onto the property ladder - our consultants can advise you through the whole process.

We offer free, no obligation mortgage advice to all our buyers.

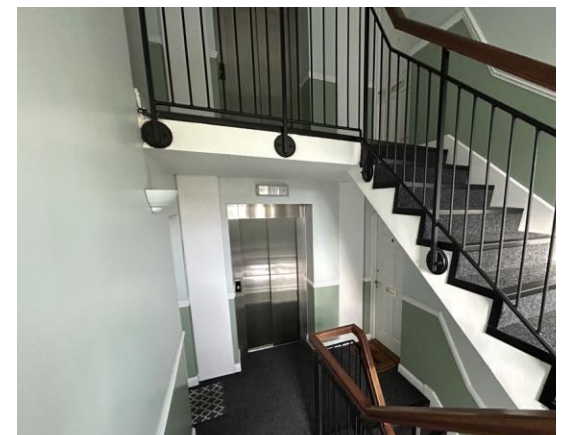
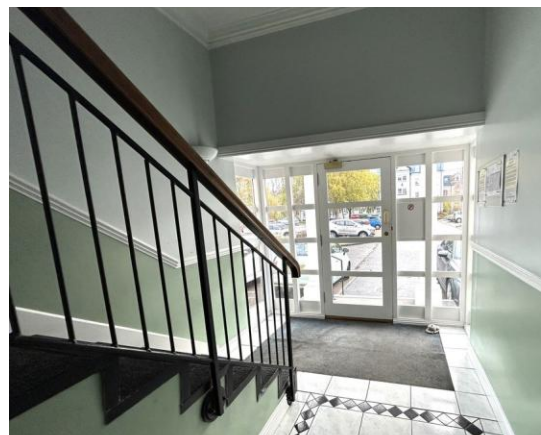
If you have a property to sell, contact us to arrange a valuation. We are renowned in getting our customers moving quicker and at a higher price than our competitors. Put us to the test and get your free valuation today, call 01738 444342.

If you would like to be kept informed of other great properties like this one please register on our hot buyers list, where we will email you of new property listings and property open days.

About the Area

Perth boasts numerous High Street shops and businesses, cafe quarter, restaurants, cinema, theatre, conference centre, leisure facilities, railway station, hospital, doctors' surgeries, dentists, primary and secondary schools which are all within close proximity.

Perth is a scenic city on the banks of the River Tay and caters for easy commuting to all major cities within the central belt of Scotland.



Property Summary

A rare opportunity to purchase this spacious SECOND FLOOR TWO BEDROOM APARTMENT entered via a secure entry door system.

The building benefits from having a lift to all floors and is located adjacent to the beautiful South Inch Parklands.

The accommodation comprises large entrance hall with 3 storage cupboards; bright lounge with front facing window and views over the park; kitchen with integrated oven, hob and microwave together with space for a free standing fridge freezer and washing machine; modern bathroom; 2 double bedrooms both with fitted storage and the principal having an En-suite shower room.

There is double glazing and gas central heating throughout.

Externally there is private and visitors parking.

Early viewing is highly recommended to appreciate the accommodation on offer.



Key property features

- ✓ Secure entry system
- ✓ Lift facilities
- ✓ Second floor apartment
- ✓ Bright Lounge
- ✓ Views over the parklands
- ✓ 2 Double Bedrooms
- ✓ Bathroom & En-suite
- ✓ Parking
- ✓ Close to amenities
- ✓ Double Glazing & Gas Central heating









Next Home - 2F South Inch Court, Perth, PH2 8BG

An aerial photograph of a residential neighborhood, showing rows of houses with red brick walls and grey roofs. The image is overlaid with a semi-transparent blue filter. The houses are arranged in a grid-like pattern, with some featuring gardens and driveways. The overall scene is a typical suburban housing estate.

Have a property to sell?

An expert from our local branch will provide you with the most accurate valuation.



NEXTHOME

ESTATE & LETTING AGENTS

Floorplans



Property Room sizes

HALL

14' 10" x 8' 10" (4.52m x 2.69m)

LOUNGE

13' 6" x 11' 5" (4.11m x 3.48m)

KITCHEN

10' 0" x 8' 10" (3.05m x 2.69m)

BATHROOM

6' 11" x 6' 0" (2.11m x 1.83m)

BEDROOM

9' 8" x 9' 8" (2.95m x 2.95m)

ENSUITE

7' 0" x 5' 1" (2.13m x 1.55m)

BEDROOM

9' 7" x 9' 4" (2.92m x 2.84m)

PLEASE NOTE: These particulars whilst believed to be accurate are set out as a general outline only for guidance and do not constitute any part of an offer or contract intending, purchasers should not rely on them as statements or representations of fact, but must satisfy themselves by inspection or otherwise as to their accuracy. No person in this firm's employment has the authority to make or give representation or warranty in respect of the property. All room sizes are approximate and for general guidance only. They cannot be relied upon for fitting carpets, furniture etc.



NEXTHOME
ESTATE & LETTING AGENTS

TO ARRANGE A VIEWING OF THIS PROPERTY PLEASE TELEPHONE YOUR LOCAL BRANCH BELOW:

63 – 65 George Street, Perth 01738 44 43 42

41 - 43 Allan Street, Blairgowrie..... 01250 39 80 02

47a Atholl Road, Pitlochry..... 01796 54 80 14

1a James Square, Crieff.....01764 65 00 44

211 High Street, Auchterarder.....01764 66 36 66

Email sales@nexthomeonline.co.uk

For more information about Next Home and our services please visit www.nexthomeonline.co.uk

The only Perthshire estate agent available 7 days until 9pm

PLEASE NOTE: These particulars whilst believed to be accurate are set out as a general outline only for guidance and do not constitute any part of an offer or contract intending, purchasers should not rely on them as statements or representations of fact, but must satisfy themselves by inspection or otherwise as to their accuracy. No person in this firm's employment has the authority to make or give representation or warranty in respect of the property. All room sizes are approximate and for general guidance only. They cannot be relied upon for fitting carpets, furniture etc.

Registered Office Argyll House, Quarrywood Court, Livingston, West Lothian EH54 6AX. Registered in Scotland No. SC264812. NEXTHOME (Scotland) Ltd is an appointed representative of Kinggate Law Limited, which is authorised and regulated by the Financial Conduct Authority for advising on and arranging mortgages and insurance, broking and debt counselling of consumer credit agreements.



Next Home are proud to be members of the Property Ombudsman Scheme