



17 CHAD ROAD

EDGBASTON, BIRMINGHAM B15 3ER

Robert  Powell  
RESIDENTIAL SALES & LETTINGS



# 17 CHAD ROAD

EDGBASTON, BIRMINGHAM, B15 3ER

£1,300,000

Robert  Powell  
RESIDENTIAL SALES & LETTINGS

An elegant five bedroomed Grade II listed villa constructed in the early part of the 19th century, being one of a pair built of white brick with stucco dressings, with windows and doors of identical proportions all with architrave surrounds with crisply modelled cornices. The house presents as an excellent example of Victorian architecture more common in cities such as London and Bath.

## Situation

Chad Road is a one-way road leading from Harborne Road up to the A456 Hagley Road, which provides easy access to the M5 and M6 motorway network and to Birmingham City Centre. It is conveniently placed for some of the prestigious private schools in the area and is also within the catchment area of Chad Vale State School on Nursery Road. It is near the facilities of Harborne High Street and also to the newly designated Edgbaston Village with its excellent assortment of restaurants, bistros and bars. Edgbaston Golf Club and the Priory Tennis and Squash Club are also within easy reach. The Queen Elizabeth Hospital, The Medical School and Birmingham University are approximately a mile away.

## Description

17 Chad Road lies back from the road behind a walled driveway which is shared with its neighbour. The house is impressive in its external and internal elegance which has been proudly preserved by the current owners; it has been recently secondary-glazed throughout. The entrance is through double doors into a porch with glazed inner door opening into the:

## Reception Hall

This is notable because of its high ceiling, and black and white tiled flooring. The plasterwork to the ceiling and archway is elaborate and perfectly maintained with a superb archway leading to the rear.

## The Drawing Room

This is at the front of the house and has two identical sash windows which have been secondary-glazed and which ensure maximum natural light. The room is rich in architectural features, including an exquisite painted ceiling, period marble fireplace with living flame









gas fire, picture and dado rails. The ceiling height mirrors that in the reception hall.

### The Dining Room

An impressive room with period wooden fireplace with marble detail and gas fire, the alcoves to each side have fitted book shelves above and cupboards beneath. There is again delicate plasterwork to the ceiling with coving and a picture rail. The large bay window onto a walled garden is most impressive and has French doors onto the terrace and garden with window seats to each side. The owners have had constructed an inobtrusive dual workstation along one wall with the appropriate electronic connections which mean that the room can be used as a home office if required.

The hall extends to the rear of the house with a glazed door onto the terrace and garden and door and stairs leading to the **cellar**, which has an area of 355 sq.ft. and with three distinct chambers. Halfway down the hall to the left is an internal door leading to the less formal area of the ground floor with its red quarry tiled flooring. There is a **cloakroom** with w.c. and hand washbasin and small window onto the garden.

### The Family Room

This has a large sash window onto the terrace, period fireplace with gas fire, picture rail and inbuilt full-length cupboard to the side of the fireplace.

### The Breakfast/Kitchen

The breakfast room has an array of fitted units both base and wall mounted and is large enough to use for informal dining. A step down leads to the kitchen with window to the front and side and large large roof light with its Aga cooker, ensuring constant heat, inbuilt microwave, fridge, double sink and integrated dishwasher.

The adjoining utility room has plumbing for washing machine and tumble dryer, single drainer sink, door to the terrace and access to the garage which is at the front of the property and which will house a modest sized car and is largely used for storage.

### The First Floor

The elegant staircase with its lovely oak handrail curves gently round, on the half landing is a beautiful window which lights up the wide landing area at the top of the stairs. Elegant plasterwork is also a feature of this impressive area from which the rooms emanate.

### Master Bedroom 1

An elegant room with two sash windows onto the front drive, it is particularly light, has high ceilings, picture rail and inbuilt wardrobes along one wall and a marble fireplace. The en-suite bathroom with









white suite is particularly well-appointed with roll top bath, pedestal washbasin with mirrored medicine cabinet, w.c., and shower cubicle.

**Bedroom 2** is another double room with views onto the rear garden and pretty original fireplace.

**Bedroom 3** is also a double-sized room enjoying garden views and has fitted wardrobes and fireplace.

**Bedroom 4** is on the front of the house, it has useful built in cupboards and feature fireplace.

#### **Family Bathroom**

This is off the landing and has a white suite with bath and shower over, glass shower panel, hand washbasin and w.c.

#### **Guest bathroom**

En Suite to bedroom 2, this has a bath with shower over and hand washbasin. There is a separate w.c.

#### **Second Floor**

A staircase leads up to the fifth bedroom. At the top of the stairs is a compact en-suite shower room. The bedroom itself is in the eaves, it has plenty of space and light with a large lantern light, Velux windows, downlighters to the ceiling and a useful very spacious walk-in wardrobe.

#### **Outside**

At the front, there is excellent parking for several cars, the in and out driveway is shared with the adjoining house. The walled garden at the rear has some magnificent shrubs, including a lovely magnolia tree, lawns, a paved area for enjoying the evening sun, and a shed from the "Posh Shed Company" which will remain following the sale.

#### **General Information**

**Tenure:** The property is understood to be freehold however as it forms part of the Calthorpe Estate it is subject to the Estate's Scheme of Management, a copy of which is available on request. There is a small annual estate charge payable which is presently approximately £65 per annum.

**Council Tax:** Band G.

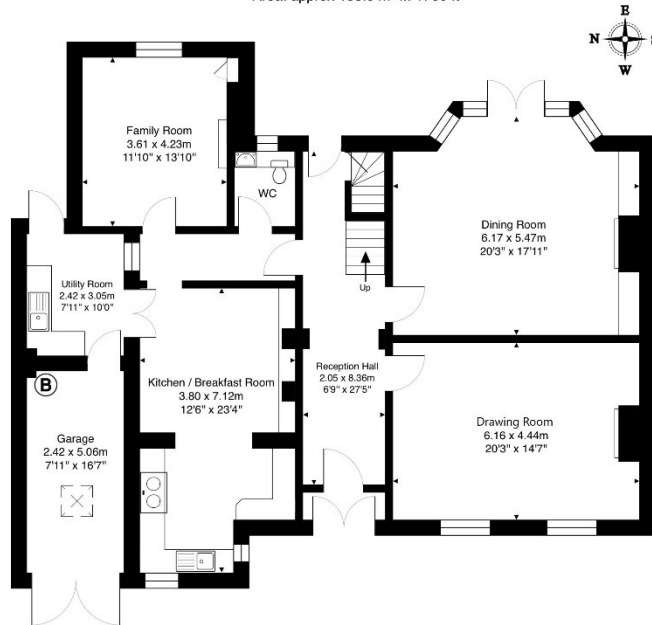




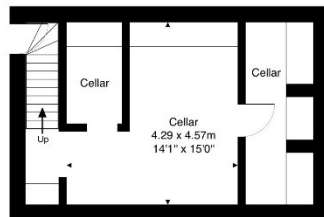




**Ground Floor**  
Area: approx 158.0 m<sup>2</sup> ... 1700 ft<sup>2</sup>



**Basement**  
Area: approx 32.9 m<sup>2</sup> ... 355 ft<sup>2</sup>



**First Floor**  
Area: approx 127.9 m<sup>2</sup> ... 1377 ft<sup>2</sup>



**Second Floor**  
Area: approx 41.7 m<sup>2</sup> ... 449 ft<sup>2</sup>



17 Chad Road, Edgbaston, Birmingham, B15 3ER.

Total Area: approx 360.5 m<sup>2</sup> ... 3881 ft<sup>2</sup>

All measurements are approximate and for display purposes only  
Area figures are approximate only  
Contact agent for more details



7 Church Road, Edgbaston, B15 3SH

Tel: 0121 454 6930

Fax: 0121 454 3676

Email: sales@robertpowell.co.uk

www.robertpowell.co.uk

Robert Powell for themselves and for the vendors or lessors of this property whose agents they are, give notice that (i) the particulars are set out as a general outline copy for the guidance of intending purchasers or lessees, and do not constitute part of an offer or contract; (ii) all descriptions, dimensions, references to condition and necessary permission for use and occupation, and other details are given without responsibility and any intending purchasers or tenants should not rely on them as statements or representations of fact but must satisfy themselves by inspection or otherwise as to the correctness of each of them; (iii) no persons in the employment of Robert Powell & Co has any authority to make or give any representation or warranty whatever in relation to this property. No services, fixtures, fittings or appliances, including central heating, have been tested by the Agent at the time of printing. All references to parts of the fabric, material, decoration, external or internal features or grounds of the property are made without any warranty as to their conditions or effectiveness. Where definite checks have been made, such results will be made clear at the appropriate place in the particulars of sale. Every effort has been made by the Agents to obtain accurate information from the correct sources. However, intending purchasers and other readers are asked to make their own arrangements regarding verification of any statements expressed in these particulars of sale

