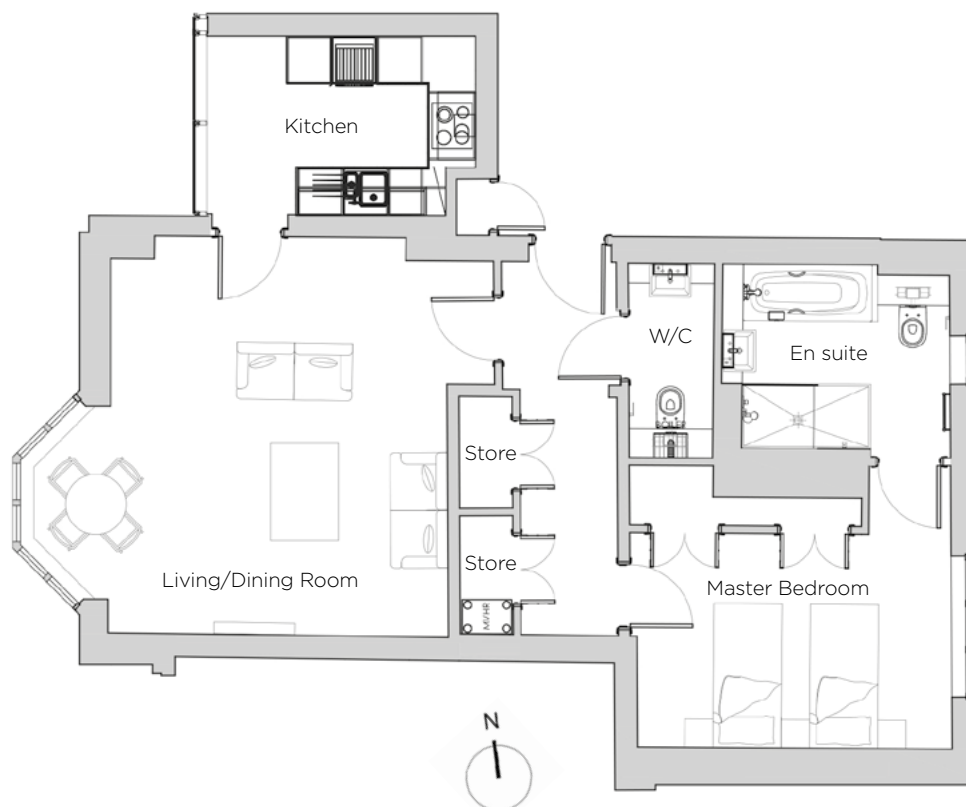
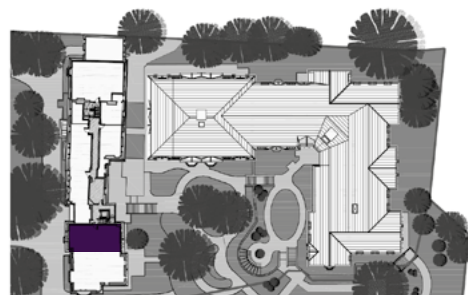


Audley St George's Place

1 Chains Court (B02)
Ground Floor Apartment



Internal Measurements	Metric (m)	Imperial (ft)
Living/Dining Room	5.24 x 5.07	17'9" x 16'63"
Kitchen	3.55 x 2.35	11'64" x 7'70"
Master Bedroom	4.15 x 3.72	13'64" x 12'20"
Total Apartment Area	75m ²	807ft ²



Audley St George's Place
2 Church Road
Edgbaston, West Midlands B15 3SH
0121 454 5270
www.audleyvillages.co.uk

Built-in wardrobes in bedrooms have not been included in the overall dimensions.
Maximum measurements shown. These pages are intended for marketing purposes only.
Designs vary according to plot and all details should be checked at the Sales Office.
March 2019



Audley St George's Place

1 Chains Court (B02)
Ground Floor Apartment



1 bedroom, first floor apartment

Set in the heart of St George's Place retirement village, this beautifully converted Victorian building offers a one bedroom apartment with space and style. The bedroom has a large feature window that looks out onto the landscaped gardens of the village.

Property specifications:

- Luxury kitchen with a large west-facing window
- A spacious living/dining room with a feature bay window
- The bedroom has double fitted wardrobes with an en suite with shower and bath
- Separate WC
- Two good sized storage cupboards in hallway



Audley St George's Place
2 Church Road
Edgbaston, West Midlands B15 3SH
0121 454 5270
www.audleyvillages.co.uk

