

6 Slater Street, Blackburn

£90,000 Freehold

THREE BEDROOM TERRACED HOME IN MILL HILL Presented with no onward chain, this property is ideal for first time buyers and investors to put their own mark and make their own.

Council Tax band: A

Tenure: Freehold

EPC Energy Efficiency Rating: C

EPC Environmental Impact Rating: C



THREE BEDROOM TERRACED HOME IN MILL HILL Presented with no onward chain, this property is ideal for first time buyers and investors to put their own mark and make their own.

Welcome to this charming three bedroom terraced house, located on a quiet cul-de-sac in Mill Hill. This property boasts a well-proportioned layout, including a spacious reception lounge and good-sized kitchen diner where with careful design, you could incorporate a kitchen island adding value to the property. With one double and two single bedrooms, there is ample space for a growing family or versatility to include a home office or dressing room. The property features a fresh and clean three piece bathroom, again, ideal to move in immediately. The rear yard offers a private outdoor space, created to ensure low maintenance while offering ample space to enjoy. Whether you're looking for your first home or an investment opportunity, this property is a fantastic choice with no chain delay, providing a seamless purchase process.

Slate Street is located in a quiet position between the centre of Mill Hill and Livesey Branch Road, walking distance to local amenities, schools and transport links.



Vestibule

Carpet mat flooring, double glazed uPVC front door, single glazed wooden framed window.

Lounge

Carpet flooring, electric fireplace, double glazed uPVC window, panel radiator.

Kitchen

Vinyl flooring, fitted wall and base units with contrasting work surfaces, tiled splash backs, gas hob, electric oven, extractor fan, stainless steel sink and drainer, plumbed for washing machine, space for fridge freezer, wall mounted boiler, under stairs storage, stairs up to first floor, double glazed uPVC window and door, panel radiator.

Landing

Carpet flooring, loft access.

Bedroom One

Double bedroom with carpet flooring, double glazed uPVC window, panel radiator.

Bedroom Two

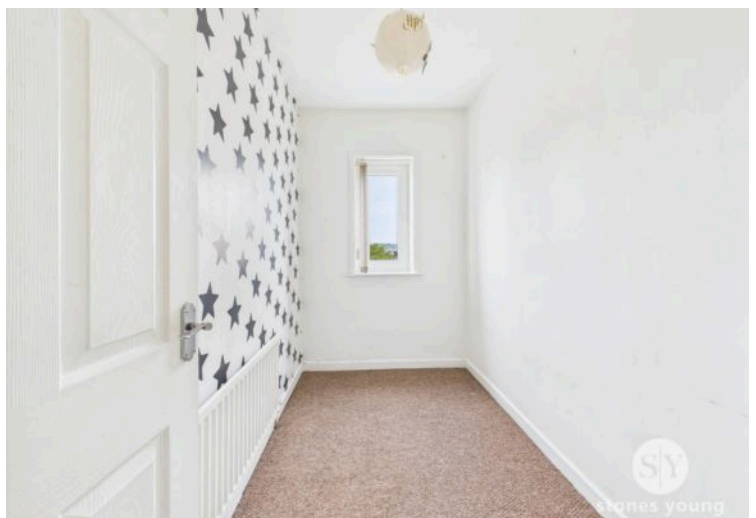
Double bedroom with carpet flooring, double glazed uPVC window, panel radiator.

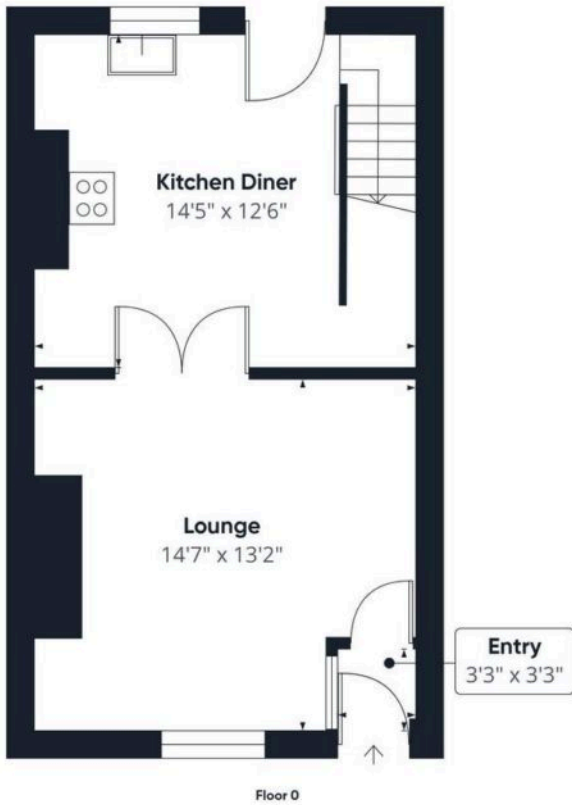
Bedroom Three

Single bedroom with carpet flooring, double glazed uPVC window, panel radiator.

Bathroom

Vinyl flooring, three piece in white comprising of electric shower over bath, wc and basin, tiled splash backs, cupboard, frosted double glazed uPVC window, panel radiator.





Approximate total area⁽¹⁾
685 ft²

(1) Excluding balconies and terraces

Calculations reference the RICS IPMS 3C standard. Measurements are approximate and not to scale. This floor plan is intended for illustration only.

GIRAFFE360

You can include any text here. The text can be modified upon generating your brochure.