



3 Greenfields, Blackburn

£250,000 Freehold

STYLISH AND CONTEMPORARY THREE-BEDROOM DETACHED FAMILY HOME POSITIONED IN GREENFIELDS, OAKDALE. A stunning three-bedroom detached family home, perfectly positioned in the highly coveted Greenfields development in Oakdale. This beautifully presented home sits on a fantastic plot, offering both driveway parking and immaculate front and rear gardens.

Council Tax band: C

Tenure: Freehold

EPC Energy Efficiency Rating: C

EPC Environmental Impact Rating: D



STYLISH AND CONTEMPORARY THREE-BEDROOM DETACHED FAMILY HOME POSITIONED IN GREENFIELDS, OAKDALE. A stunning three-bedroom detached family home, perfectly positioned in the highly coveted Greenfields development in Oakdale. This beautifully presented home sits on a fantastic plot, offering both driveway parking and immaculate front and rear gardens.

Upon entering, you are greeted by an impressive hallway that houses the stairs to the first floor, complete with under-stair storage. Adjacent to the hallway is a recently installed, modern WC. The generous lounge is a serene space, featuring a large bay window that allows ample natural daylight to fill the room. Through the archway, you enter the second reception room, currently utilised as a dining area with doors leading into the bright sunroom. The sunroom is an incredibly versatile space, enjoying views overlooking the garden.

The kitchen offers ample storage with cream base and eye-level units, contrasting work surfaces, and stunning tiling. Additionally, there is a handy utility room that complements the kitchen space perfectly. The garage has been thoughtfully converted to create a wonderful office, ideal for those working from home.

On the first floor, the landing leads to the serene master bedroom, complete with built-in wardrobes to maximise space. The master bedroom is serviced by a recently installed en-suite shower room in white. There are two further well-presented bedrooms and a modern, three-piece family bathroom suite in white, completing the property internally.

This home is warmed by gas central heating and benefits from uPVC double glazing throughout. Positioned in a prime location on Greenfields, this property boasts driveway parking for up to three cars and a laid-to-lawn garden at the front. To the rear, there is a generous enclosed garden with a flagged patio, ideal for outdoor dining, and an Astro turf area bordered by beautiful bedding plants. This beautiful property is in a prime location for the outstanding Redeemer Primary School.

This is a property not to be missed. Contact us today to arrange a viewing and make this stylish and contemporary family home yours.



Hallway

Tiled heated flooring, ceiling coving, under stairs storage, stairs to first floor, double glazed uPVC front door, panel radiator.

Lounge

Carpet flooring, ceiling coving, gas fire with hearth and surround, double glazed uPVC window, x2 panel radiators.

Dining Room

Carpet flooring, ceiling coving, French doors leading into the conservatory, panel radiator.

Conservatory

Tiled flooring, double glazed uPVC throughout, panel radiator.

Wc

Heated tiled flooring, two piece in white with tiled floor to ceiling, ceiling spot lights, frosted double glazed uPVC window, towel radiator.

Kitchen

Tiled flooring, fitted wall and base units with contrasting work surfaces, tiled splash backs, sink and drainer, range gas cooker, extractor fan, space for microwave and fridge freezer, double glazed uPVC window, door leading to rear garden, panel radiator.

Utility Room

Laminate flooring, space for washing machine and tumble dryer, cupboard housing boiler.

Office

Laminate flooring, ceiling coving, double glazed uPVC window, panel radiator.

Landing

Carpet flooring, loft access, double glazed uPVC window, storage cupboard.

Bedroom

Double bedroom with carpet flooring, ceiling spot lights, double glazed uPVC window, panel radiator.

En Suite

Tiled flooring, two piece in white with mains fed shower enclosure, basin with vanity cupboard, ceiling spot lights, frosted double glazed uPVC window, towel radiator.

Bedroom 2

Double bedroom with carpet flooring, double glazed uPVC window, panel radiator.

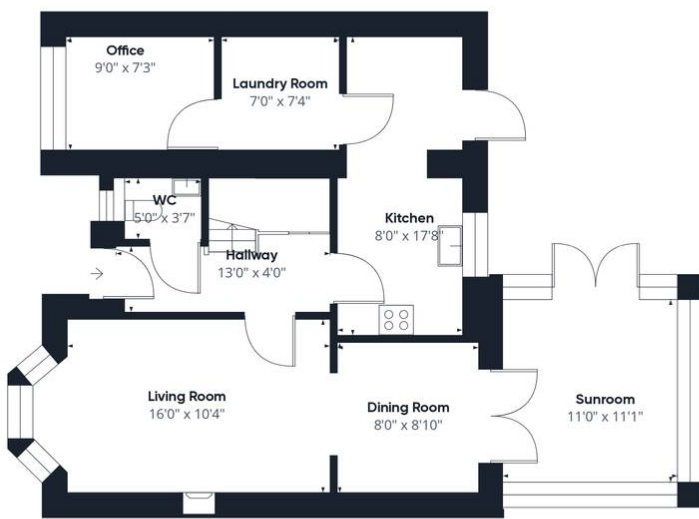
Bedroom 3

Carpet flooring, double glazed uPVC window, panel radiator.

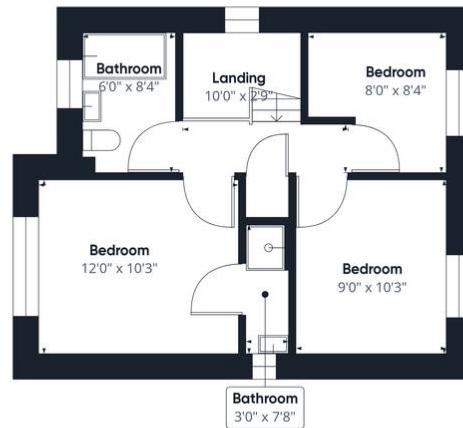
Bathroom

Tiled flooring, three piece in white with bath, wc and basin with vanity cupboard, tiled splash backs, ceiling spot lights, frosted double glazed uPVC window, panel radiator.





Floor 0



Floor 1

Approximate total area¹⁾
1126.98 ft²

(1) Excluding balconies and terraces

While every attempt has been made to ensure accuracy, all measurements are approximate, not to scale. This floor plan is for illustrative purposes only.

GIRAFFE360

You can include any text here. The text can be modified upon generating your brochure.