

18 Ramsgreave Road, Ramsgreave

£250,000 Leasehold

Council Tax band: D

Tenure: Leasehold



WONDERFUL THREE BEDROOM FAMILY HOME IN RAMSGREAVE This opulent property is positioned well on Ramsgreave Road and offers front and rear gardens along with a garage and driveway parking. With two reception rooms and three bedrooms the standard of accommodation is not to be missed and so early viewing is highly advised!

The front door brings you into the entrance vestibule opening up into the welcoming hallway with doors leading into the large 18ft lounge which is light and airy and tastefully decorated with a central feature fireplace. The second reception room has a relaxed cosy feeling, the room could serve well for a work from home study space or second sitting room. Further down the hallway is the kitchen where there is plenty of storage space comprising of wall and base units with contrasting work surfaces and space for appliances. An additional rear porch and utility are also available along side a conveniently located w/c.

Making your way upstairs to the first floor, the spacious landing has a door leading into the master bedroom with fitted cupboards allowing the floorspace to be utilised perfectly. There is a second double bedroom on this floor as well as a third single bedroom. Completing the property internally is the family bathroom and separate w/c. The property benefits from gas central and uPVC double glazing throughout.

Externally there is a well maintained front garden alongside the rear garden which benefits from a laid to lawn grass area as well as driveway parking and a large single garage. This property is set to be popular due to the excellent standard of accommodation on offer along with excellent schools, transport links and amenities being within walking distance.



Other

Carpet flooring, dado rail, double glazed uPVC front door.

Hallway

Carpet flooring, ceiling coving, stairs to first floor, under stairs storage, panel radiator.

Lounge

Carpet flooring, ceiling coving, ceiling rose, picture rail, gas fire with stone hearth, double glazed uPVC bay window, panel radiator.

Dining Room

Carpet flooring, ceiling coving, electric fire, double glazed uPVC window, panel radiator.

Kitchen

Carpet flooring, fitted wall and base units with contrasting work surfaces, gas hob, electric oven, tiled splash backs, stainless steel sink and drainer, space for under counter fridge, wall mounted boiler, double glazed uPVC window.

Rear Porch

Carpet flooring, x2 double glazed uPVC windows, double glazed door to rear.

Utility Room

Carpet flooring, fitted wall and base units with contrasting work surfaces, stainless steel sink and drainer, plumbed for washing machine and space for tumble dryer.

Wc

Concrete flooring, wc in white.

Landing

Carpet flooring, ceiling coving, double glazed uPVC window.

Bedroom

Carpet flooring, picture rail, fitted wardrobes, double glazed uPVC window, panel radiator.

Bedroom 2

Carpet flooring, ceiling coving, fitted wardrobes, double glazed uPVC window, panel radiator.

Bedroom 3

Single bedroom with carpet flooring, ceiling coving, fitted wardrobes, double glazed uPVC window, panel radiator.

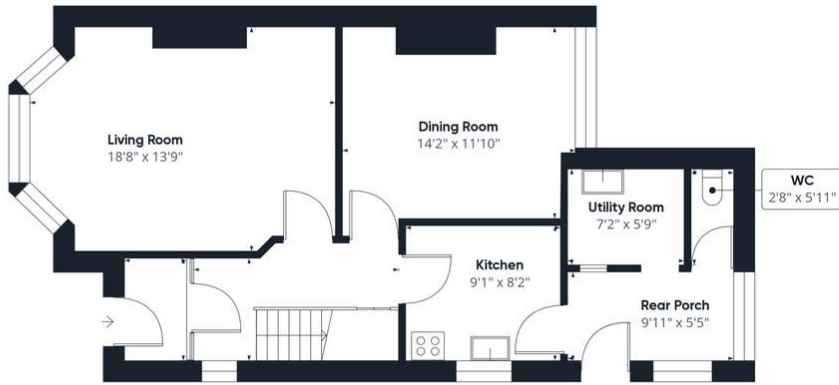
Bathroom

Carpet flooring, two piece in cream with electric shower over bath, tiled splash backs, frosted double glazed uPVC window, panel radiator.

Wc 2

Carpet flooring, wc in cream, tiled splash backs, forested double glazed uPVC window.





Floor 0 Building 1



Floor 1 Building 1



Floor 0 Building 2

Approximate total area⁽¹⁾
1405.77 ft²

(1) Excluding balconies and terraces

While every attempt has been made to ensure accuracy, all measurements are approximate, not to scale. This floor plan is for illustrative purposes only.

Calculations are based on RICS IPMS 3C standard.

GIRAFFE360