



## 9 Acrefield, Blackburn

£435,000 Freehold

**\*IMPRESSIVE FOUR BEDROOM DETACHED HOME IN BEARDWOOD WITH POTENTIAL TO EXTEND STPP\*** Situated in a quiet residential area, sits this brilliant family home. With extensive driveway parking, garage and a large private garden to the rear the property will prove extremely popular.

Council Tax band: E

Tenure: Freehold



*IMPRESSIVE FOUR BEDROOM DETACHED HOME IN BEARDWOOD WITH POTENTIAL TO EXTEND STPP* Situated in a quiet residential area, sits this brilliant family home. With extensive driveway parking, garage and a large private garden to the rear the property will prove extremely popular. Early viewing is advised to avoid disappointment.

Upon entering this wonderful property you are greeted with an entrance hallway with access to the study and downstairs cloakroom, along with a staircase leading to the first floor. The inviting lounge provides the ideal space to relax, featuring a gas fire with a lovely marble hearth and wood surround, in addition there are double doors at the rear leading onto the inviting garden patio. The second reception room offering a delightful space for dining or a secondary lounge. The bright kitchen boasts ample storage in the form of base and eye level units with contrasting work surfaces which provides access to the utility room. On the first floor, is the tranquil master bedroom, which is serviced by a contemporary three piece en-suite in white. The en-suite boasts modern tiling and a vanity unit ideal for storage. Two further double bedrooms are present, along with bedroom four, which is a good sized single bedroom. Completing this property is the three piece family shower room in white. This admirable property is warmed through gas central heating and benefits from double glazing throughout.

This attractive detached dwelling is set in a coveted location in Beardwood, which enjoys a wonderful community feel, with excellent schools and amenities close by. This wonderful family home boasts a substantial driveway, along with a well maintained laid to lawn front garden and a double garage with power and lighting. To the rear you'll discover an impressive, south-westerly facing garden, featuring a delightful flagged patio and lawn area, bordered by mature hedges, trees and plants. Due to the size of the garden there is scope to extend, subject to planning permission. This admirable property is a credit to the current vendors, who have maintained the property beautifully over the last twenty five years. High interest is expected and so early viewing is advised.



**Vestibule**

4' 8" x 4' 8" (1.42m x 1.42m)

Tiled flooring, double glazed uPVC front door, uPVC double glazed window.

**Hallway**

9' 8" x 8' 9" (2.95m x 2.67m)

Laminate flooring, panel radiator, stairs to first floor, door leading to garage.

**Lounge**

11' 10" x 25' 3" (3.61m x 7.70m)

Carpet flooring, gas fire with hearth and surround, two panel radiators, TV point, uPVC double glazed window, French door to rear.

**Dining Room**

10' 6" x 9' 7" (3.20m x 2.92m)

Carpet flooring, panel radiator, uPVC double glazed window.

**Second Reception Room**

8' 9" x 9' 8" (2.67m x 2.95m)

Carpet flooring, panel radiator, uPVC double glazed window.

**Kitchen**

10' 1" x 12' 7" (3.07m x 3.84m)

Range of fitted wall and base units and contrasting work surfaces, tiled flooring, five ring gas hob with extractor hood, integrated oven and microwave, tiled splashback, stainless steel sink and drainer, space for dishwasher, space for dining table, panel radiator, uPVC double glazed window.

**Utility**

6' 0" x 9' 9" (1.83m x 2.97m)

Tiled flooring, fitted wall and base units with contrasting work surfaces, tiled splash backs, stainless steel sink and drainer, plumbed for washing machine and tumble dryer, space for fridge freezer, panel radiator, door to rear garden, uPVC double glazed window.

**Cloakroom**

9' 5" x 3' 4" (2.87m x 1.02m)

LVT flooring, 2 piece modern suite in white with sink and vanity unit, tiled splash backs, panel radiator.

**Landing**

Carpet flooring, loft access.

**Master Bedroom**

13' 0" x 14' 8" (3.96m x 4.47m)

Double bedroom, carpet flooring, fitted sliding wardrobe, panel radiator, uPVC double glazed window.

**En Suite**

10' 2" x 6' 1" (3.10m x 1.85m)

Tiled flooring, three piece in white, paneled bath and mains fed shower over bath, built in vanity storage, Heated ladder radiator, tiled floor to ceiling, uPVC double glazed frosted window, ceiling spotlights.

**Bedroom Two**

13' 1" x 7' 7" (3.99m x 2.31m)

Double Bedroom, laminate flooring, storage cupboard, panel radiator, uPVC double glazed window.

**Bedroom Three**

10' 5" x 10' 4" (3.18m x 3.15m)

**Bedroom Four**

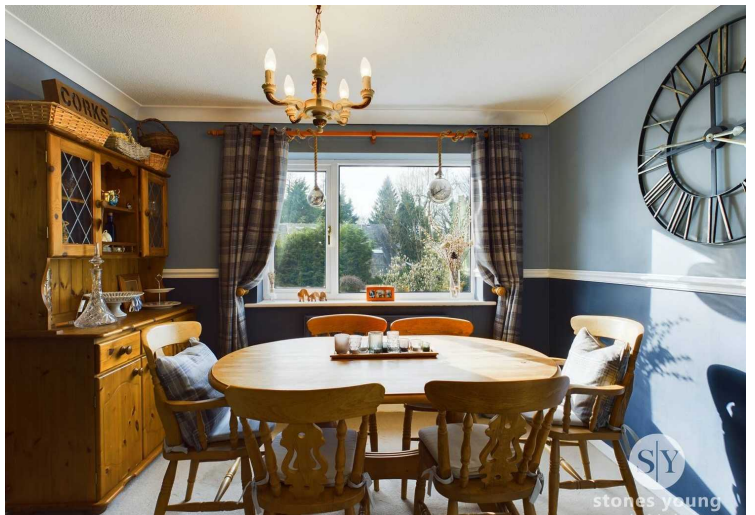
8' 9" x 7' 0" (2.67m x 2.13m)

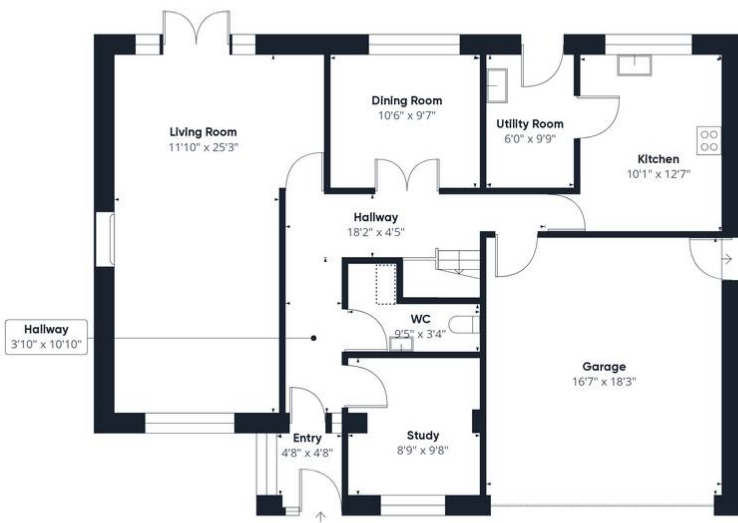
Single Bedroom, carpet flooring, panel radiator, uPVC double glazed window.

**Bathroom**

5' 9" x 6' 7" (1.75m x 2.01m)

LVT flooring, three piece suite in white with walk in shower. Tiled floor to ceiling, heated ladder radiator, uPVC double glazed frosted window, sink housing vanity unit.





Floor 0



Floor 1

Approximate total area<sup>(1)</sup>  
1851.67 ft<sup>2</sup>

Reduced headroom  
3.64 ft<sup>2</sup>

(1) Excluding balconies and terraces

Reduced headroom  
(below 1.5m/4.92ft)

While every attempt has been made to ensure accuracy, all measurements are approximate, not to scale. This floor plan is for illustrative purposes only.

GIRAFFE360