

FOR SALE



Anstey Lane

2 Bedrooms, 1 Bathroom, Detached Bungalow

Asking Price Of £280,000



- **Two Bedroom Detached Bungalow**
- **Located On Anstey Lane**
- **Living Room**
- **Kitchen Diner**
- **Two Bedrooms**
- **Bathroom With Shower Cubicle**
- **Landscaped Gardens**

FULL DESCRIPTION

A beautiful two bedroom detached bungalow with an entrance hall, lounge, kitchen/diner, two bedrooms and a family bathroom. Benefiting from gas fired central heating and double glazing. Outside there are landscaped front and rear gardens and a garage situated en bloc. Internal viewing is highly recommended. EPC rating is

%epcGraph_c_1_331%



HALLWAY 14' 2" x 4' 10" (4.32m x 1.47m) Double glazed door, storage cupboard and radiator.

LIVING ROOM 12' 9" x 13' 0" (3.89m x 3.96m) The living room has a front elevation double glazed bay window, radiator, fireplace and hard flooring.

KITCHEN/DINER 8' 6" x 23' 3" (2.59m x 7.09m) The kitchen has a range of wall and base units, roll edge work surfaces, fitted oven and hob with extractor, sink unit with mixer tap, tiled splashbacks, hard flooring and side elevation double glazed window and door to the garden.

BEDROOM 11' 14" x 12' 8" (3.71m x 3.86m) Bedroom one has a front elevation double glazed bay window, hard flooring and radiator.

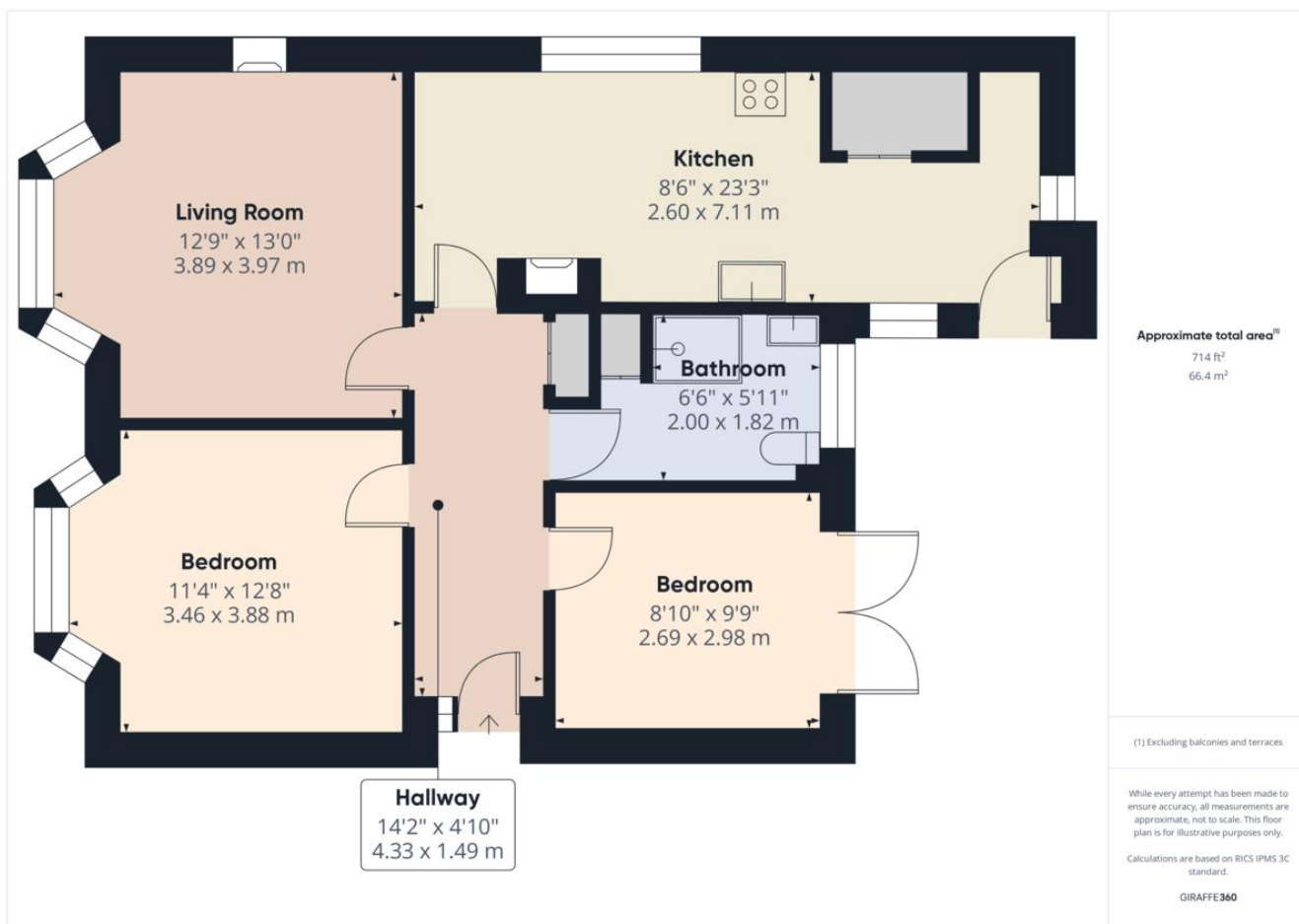


BEDROOM 8' 10" x 9' 9" (2.69m x 2.97m) Bedroom two has a rear elevation double glazed doors into the garden and radiator.

BATHROOM 6' 6" x 5' 11" (1.98m x 1.8m) The bathroom is fitted with a suite comprising of a shower cubicle, wash hand basin, low level WC, a rear elevation double glazed window, radiator, tiled splashbacks and airing cupboard housing the combi boiler.

OUTSIDE Externally to the front there is a gate with steps leading to the front of the property, borders and a block pathway. The rear garden area is a feature of the property with block paved area, patio, steps leading up to an embankment style garden, being landscaped and fenced sides. There is also a garage located on Snow Hill in a block with up and over door. Viewing of the property is highly recommended.





Martin & Co Leicester

162 Narborough Road • Leicester • LE3 0BW
T: 0116 204 4920 • E: leicester@martinco.com

0116 204 4920

<http://www.martinco.com>



Accuracy: References to the Tenure of a Property are based on information supplied by the Seller. The Agent has not had sight of the title documents. A Buyer is advised to obtain verification from their Solicitor. Items shown in photographs including but not limited to carpets, fixtures and fittings are not included unless specifically mentioned within the sales particulars. They may however be available by separate negotiation. Buyers must check the availability of any property and make an appointment to view before embarking on any journey to see a property. No person in the employment of the agent has any authority to make any representation about the property, and accordingly any information given is entirely without responsibility on the part of the agents, sellers(s) or lessors(s). Any property particulars are not an offer or contract, nor for m part of one. **Sonic / laser Tape:** Measurements taken using a sonic / laser tape measure may be subject to a small margin of error. **All Measurements:** All Measurements are Approximate. **Services Not tested:** The Agent has not tested any apparatus, equipment, fixtures and fittings or services and so cannot verify that they are in working order or fit for the purpose. A Buyer is advised to obtain verification from their Solicitor or Surveyor.