

2

BED

No Onward Chain! South Facing Garden

3, Downs View, Peacehaven, BN10 8JE



Price £259,950

Freehold

phillipmann
we do more

www.phillipmann.com

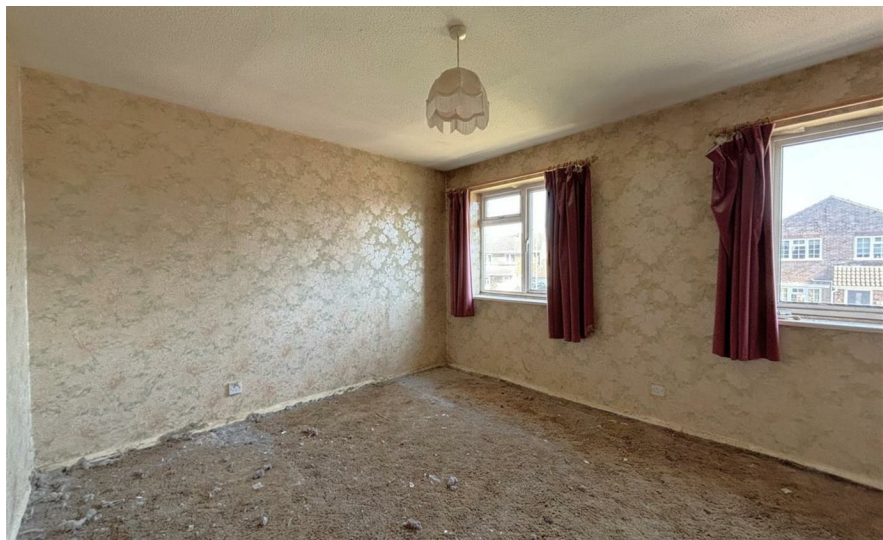


inbrief...

Don't miss this RARE OPPOTUNITY to purchase bright and SPACIOUS family home with is being sold with NO ONWARDS CHAIN. An ideal property for those wanting to get their first step on the ladder or someone looking for their next investment. Located towards the north of Peacehaven and within short walking distance of the South Downs National Park, local primary school, regular bus service to Brighton, open fields and countryside walks. The property does now require updating but with little imagination and some hard work could be brought back to its former glory.

Internally the principal accommodation is very well proportioned and you will appreciate the seamless flow this home has to offer. The lounge/dining room has plenty of space for your soft furnishings as well as a decent size dining table and chairs. This is a bright space with a window overlooking the front garden and double doors overlooking and affording access to the southerly facing rear garden. Adjacent you will find the fitted kitchen has a good range of work surfaces, drawers, cupboards and enough space for the usual appliances alongside a window which overlooks the rear garden. There are two bedrooms located on the first floor, both of which are generous in size, one faces the front and the other overlooks the rear garden. Completing the first floor is the family bathroom/wc, which comprises of a bath, wc and basin.

Externally the property has a low maintenance front garden and a generous, sunny south facing rear garden, ideal for the kids to play and adults to relax. This is mostly laid to lawn but does offer a patio area as well. Lastly parking is no issue here. There is parking directly outside the front of the property, as well as a garage in a nearby block.



EPC Rating - D
Council Tax Band - B

moreinfo...

Phillip Mann Peacehaven Office
226-230 South Coast Road, Peacehaven, BN10 8JR
01273 586622



To see more details on this & all our homes go to
www.phillipmann.com