

3
BED

Detached Family Home

88b, Hoddern Avenue, Peacehaven, BN10 7QU



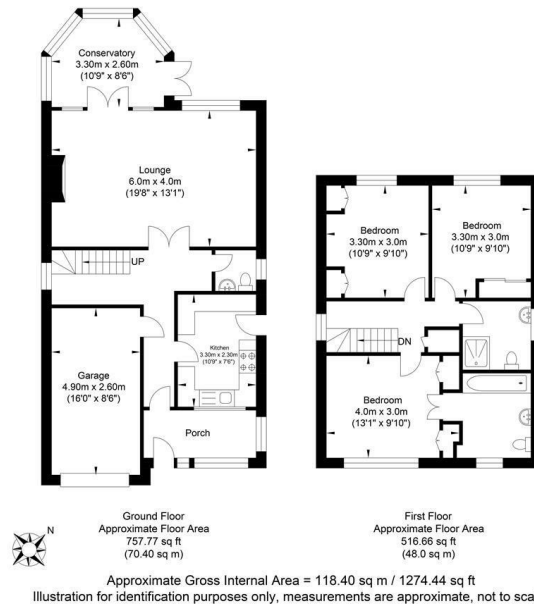
Price £375,000

Freehold

phillipmann
we do more

www.phillipmann.com

Hodder Avenue



inbrief...

Phillipmann estate agents are delighted to offer for sale this three bedroom detached house situated in a convenient central location within a short walk to the Meridian Shopping Centre, local schools and main bus routes to Brighton/Eastbourne.

As you approach the property there is block paved driveway providing ample off street parking and garage with up and over door featuring power, lighting, wall mounted boiler and under house void storage. The large, tiled porch has water for washing machine and leads to the inner entrance hall which features, cloakroom w/c laminate flooring throughout and integral access to the garage.

The living dining room is a great size and has tv point, ample space for all furniture, focal feature fireplace and double doors to the conservatory. The conservatory is part brick built and opens onto the rear garden.

The kitchen is fitted with a range of wall and base cupboards with complementing working surface. Features include; 1 1/2 inset sink drainer with window to front, cooker with overhead extractor, space for fridge, tiled splash back and door to side.

Upstairs, the light and airy landing has hatch to loft space and airing cupboard with pressurized tank and shelving. The family shower room features; shower tray, w/c in corner store unit, w/c and frosted window to side. Bedroom one is a double room to the front with fitted furniture and double doors opening to the generously sized bathroom ensuite. Bedrooms 2 and 3 are also double rooms with fitted wardrobes overlooking the rear.

The level sunny aspect rear garden is west facing and features; patio area with block paved garden path leading to greenhouse and storage shed, lawn covering, mature stocked borders and useful side access.

NO CHAIN
PROBATE GRANTED
VIEWINGS ADVISED



Council Tax - D

EPC - D

moreinfo...



Phillip Mann Peacehaven Office
226-230 South Coast Road, Peacehaven, BN10 8JR
01273 586622

To see more details on this & all our homes go to
www.phillipmann.com