

2
BED

Well Presented and Spacious Park Home

55 Tudor Rose Park, South Coast Road, Peacehaven, BN10 8UR



Price £149,950

Leasehold

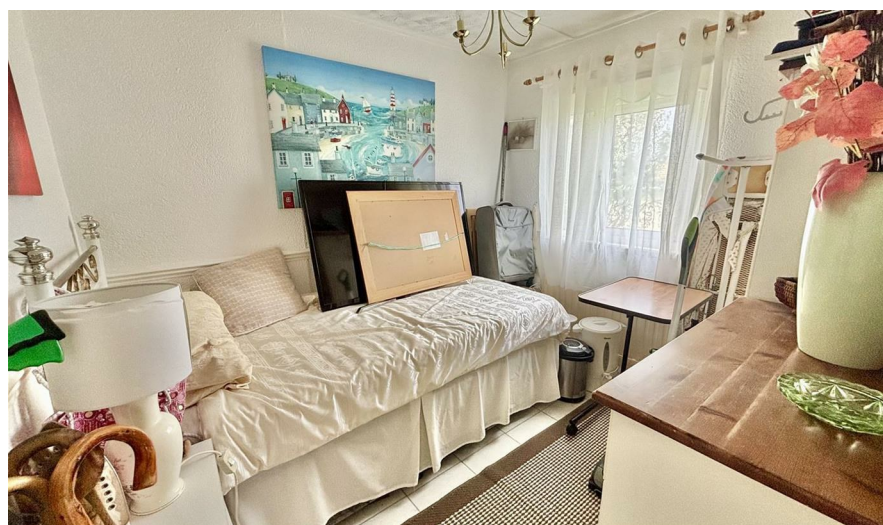
phillipmann
we do more

www.phillipmann.com



inbrief...

Are you looking for that perfect property to retire to? Then look no further as you have just found it. This particular park home has been well cared for by its current owner, and benefits from having a central position and a secluded sunny garden. Tudor Rose Park is a tranquil residential park catering for semi-retired and retired persons only, so if peace and quiet is something you are looking for then this home would be perfect. Upon entering this home you get a sense of what is yet to come, with modern neutral carpets, tasteful décor and quality fixtures and fittings. The front door opens into the entrance hallway where you will find plenty of storage cupboards. To the front there is a dual aspect, light and bright, spacious lounge/dining room where you find plenty of space for all your soft furnishings as well as a dining table and chairs. Two windows overlook the gardens and access is then gained into the adjoining kitchen. The kitchen boasts plenty of units for storage alongside contrasting work surfaces and space for all of the normal appliances. A window overlooks the rear of the home and a door to the side access the secluded and garden. Two bedrooms are located to the rear of the home, with the master bedroom offering a good degree of built-in bedroom furniture. There is also a third room which has been used recently as a dressing room but could easily be used as storage or even an office - the choice will be yours. To complete the living accommodation there is a modern white shower room/wc which incorporates a shower, wc and basin. Externally, gardens surround the home and incorporate lawn areas, pebbles areas as well as some mature shrubs. A small raised sun decked gives you the space to sit and enjoy the sun throughout the day and evening. Lastly an allocated parking space is found within short walking distance.



EPC Rating - N/A
Council Tax Band - A

moreinfo...



Phillip Mann Peacehaven Office
226-230 South Coast Road, Peacehaven, BN10 8JR
01273 586622

To see more details on this & all our homes go to
www.phillipmann.com