

3
BED

Family Home in Central Location

24, Roundhouse Crescent, Peacehaven, BN10 8GL

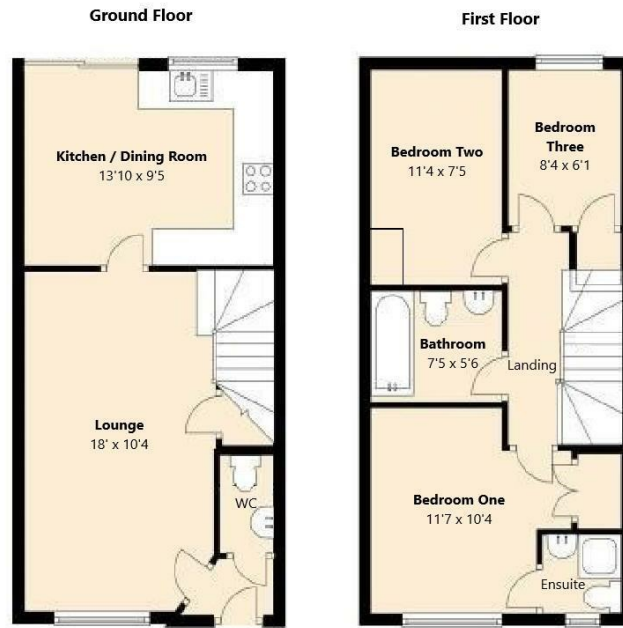


Offers Over £290,000

Freehold

phillipmann
we do more

www.phillipmann.com



inbrief...

Set in the modern and popular Meridian End development lies this three bedroom, family home. The property is located close to Centenary Park, bus links to Brighton, schools and local amenities, meaning this could be the perfect property for a growing family.

The front door opens into the entrance hall and from here a door leads into the spacious, west facing lounge, where you will find plenty of space for all your soft furnishings, and a feature fireplace alongside a window which overlooks the front garden. Access is then gained through to the kitchen/dining room. The modern kitchen is fitted with a range of high quality kitchen units and contrasting worktops and also benefits from some integrated appliances. The dining space is a good size and will easily house your dining table and chairs and is the ideal space for everyday use or entertaining friends and family. A window and door overlook and afford access to the sunny rear garden with is a great space for some al-fresco dining. A very handy cloakroom/wc completes the ground floor accommodation.

On the first floor there are three good size bedrooms, all of which benefit from fitted wardrobes. The master bedroom which is positioned to the front also has the added advantage of a refitted en-suite shower room/wc. The ensuite incorporated a shower cubicle, wc and basin. The remaining bedrooms are situated to the rear and enjoy a pleasant outlook over the garden. Finally the family bathroom concludes the first floor accommodation and comprises of a bath with shower over, wash basin, wc and are complimented with contrasting tiles.

The rear garden is a real sun trap and offers paved and lawned areas and is surrounded high fencing it is the ideal space to enjoy the long summer evenings. Lastly parking will not be a concern as not only is on street parking unrestricted but you also have the benefit of private parking and a garage too.



Energy Rating - C
Council Tax Band - C

moreinfo...



Phillip Mann Peacehaven Office
226-230 South Coast Road, Peacehaven, BN10 8JR
01273 586622

To see more details on this & all our homes go to
www.phillipmann.com